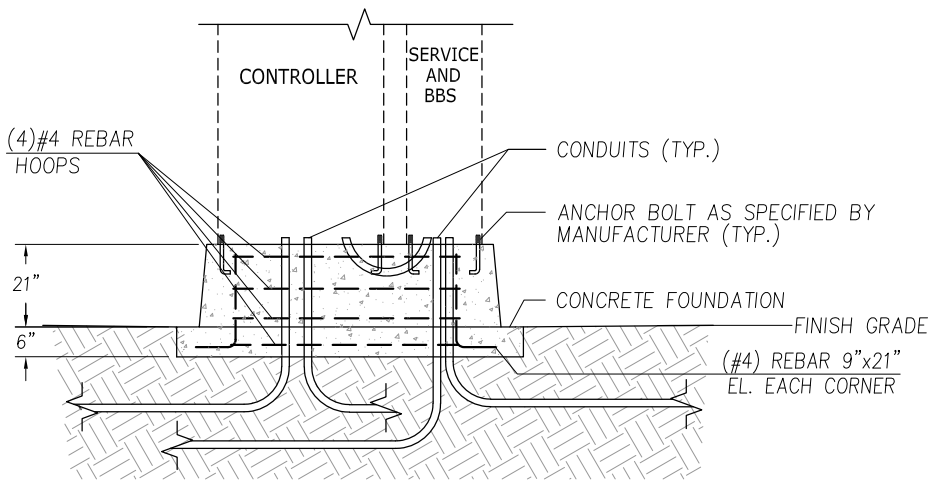


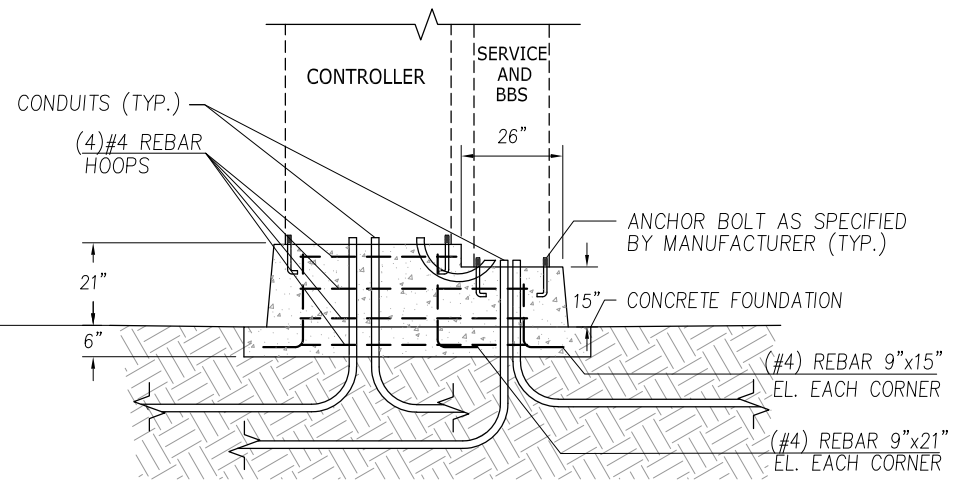
PLAN

GENERAL NOTES:

1. MATERIALS AND CONSTRUCTION REQUIREMENTS SHALL BE PER LATEST EDITION OF WSDOT STANDARD SPECIFICATIONS FOR ROAD, BRIDGE, AND MUNICIPAL CONSTRUCTION.
2. CONTRACTOR TO VERIFY FOUNDATION SIZE, ANCHOR BOLT LOCATION, AND CONDUIT LOCATION BASED ON APPROVED EQUIPMENT SHOP DRAWINGS PRIOR TO CONSTRUCTION.
3. PHOTO CELL GENERATOR SWITCH AND UTILITY PURVEYOR ACCESS DOOR SHALL BE 24" CLEAR OF OTHER OBJECTS.
4. 3/8 IN. Ø PLASTIC DRAIN TUBE SHALL BE PROVIDED FROM BASE OF CABINET TO TOP OF CONCRETE PAD AT HOUSE SIDE OF CONCRETE PEDESTAL.
5. SERVICE CABINET GROUNDING CONDUIT NOT SHOWN. CONDUIT SHALL BE RCM. SEE WSDOT STANDARD PLAN J-60.05-01 FOR TYPICAL GROUNDING DETAILS. NO GROUND RODS SHALL BE INSTALLED IN PEDESTAL.
6. CONCRETE PAD SHALL HAVE A BRUSHED FINISH. THE CONCRETE PEDESTAL TOP SHALL HAVE SMOOTH, TROWEL FINISH, WITH 0.5 IN. ROUND FILLET ON OUTSIDE TOP EDGE.
7. SEAL CONCRETE PEDESTAL TOP WITH SILVER PAINT. APPLY ADEQUATE OUTDOOR SEALANT JUST PRIOR TO PLACING CABINET. SEAL CABINET TO CONCRETE PEDESTAL. APPLY DRESS BEADING AROUND CABINET TO COMPLETE SEAL. REFER TO SPECIAL PROVISIONS FOR ADDITIONAL INFORMATION.
8. SERVICE CONDUIT INTO THE SERVICE CABINET SHOULD FOLLOW LOCAL POWER UTILITY SPECIFICATION; PLACEMENT TO MATCH SERVICE CABINET CONSTRUCTION. UTILITY MAY REQUIRE A DATA CONDUIT.
9. BBS = BATTERY BACK-UP SYSTEM.



**ELECTRICAL SERVICE CABINET UP TO 57" TALL
ELEVATION**



**ELECTRICAL SERVICE CABINET OVER 57" TALL
ELEVATION**

APPROVED FOR PUBLICATION

Paul A. Bucich
Paul A. Bucich, P.E.
PUBLIC WORKS DIRECTOR/CITY ENGINEER

01/10/20
DATE

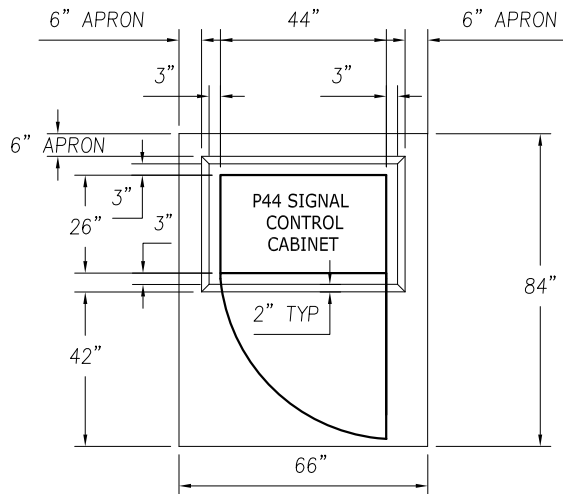


Public Works Department

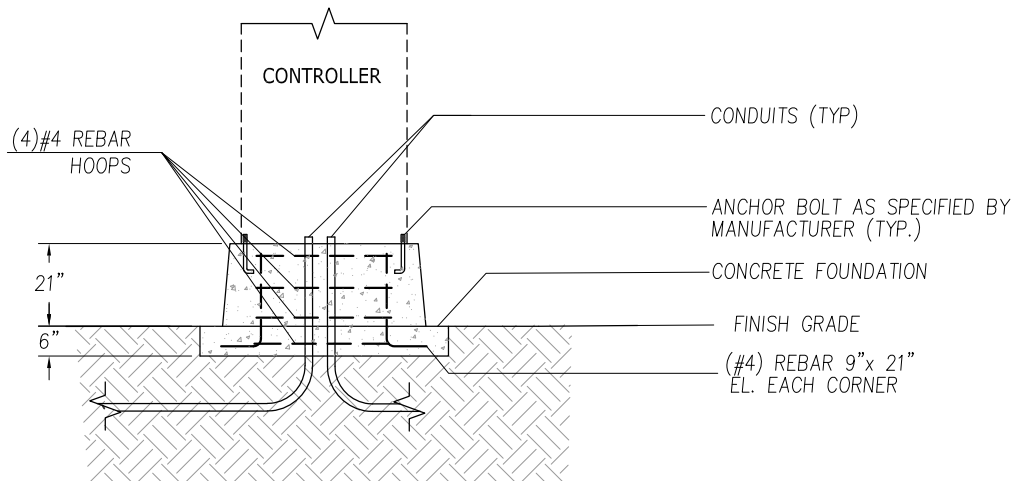
DATE	REVISION DESCRIPTION	BY	APPROVED
11/05/19	ORIGINAL DRAWING	AD/CD	PAB
6000 Main Street SW 98499		NOT TO SCALE	

**Combined Collector and
Service Cabinet Pedestal**

IS-01



PLAN



ELEVATION

GENERAL NOTES:

1. MATERIALS AND CONSTRUCTION REQUIREMENTS SHALL BE PER LATEST EDITION OF WSDOT STANDARD SPECIFICATIONS FOR ROAD, BRIDGE, AND MUNICIPAL CONSTRUCTION.
2. CONTRACTOR TO VERIFY FOUNDATION SIZE, ANCHOR BOLT LOCATION, AND CONDUIT LOCATION BASED ON APPROVED EQUIPMENT SHOP DRAWINGS PRIOR TO CONSTRUCTION.
3. $\frac{3}{8}$ IN. \emptyset PLASTIC DRAIN TUBE SHALL BE PROVIDED FROM BASE OF CABINET TO TOP OF CONCRETE PAD AT HOUSE SIDE OF CONCRETE PEDESTAL.
4. CONCRETE PAD SHALL HAVE A BRUSHED FINISH. THE CONCRETE PEDESTAL TOP SHALL HAVE SMOOTH, TROWEL FINISH, WITH 0.5 IN. ROUND FILLET ON OUTSIDE TOP EDGE.
5. SEAL CONCRETE PEDESTAL TOP WITH SILVER PAINT. APPLY ADEQUATE OUTDOOR SEALANT JUST PRIOR TO PLACING CABINET. SEAL CABINET TO CONCRETE PEDESTAL. APPLY DRESS BEADING AROUND CABINET TO COMPLETE SEAL. REFER TO SPECIAL PROVISIONS FOR ADDITIONAL INFORMATION.

APPROVED FOR PUBLICATION

Paul A. Bucich
Paul A. Bucich, P.E.
 PUBLIC WORKS DIRECTOR/CITY ENGINEER

01/10/20
 DATE



Public Works Department

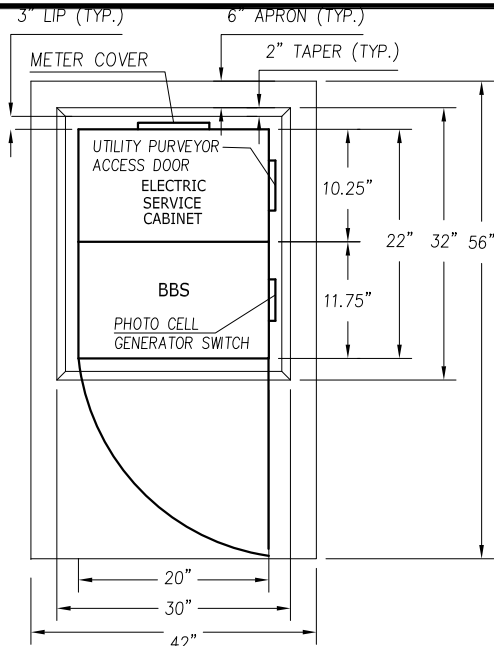
DATE	REVISION DESCRIPTION	BY	APPROVED
11/05/19	ORIGINAL DRAWING	AD/CD	PAB

6000 Main Street SW 98499

NOT TO SCALE

Controller Cabinet

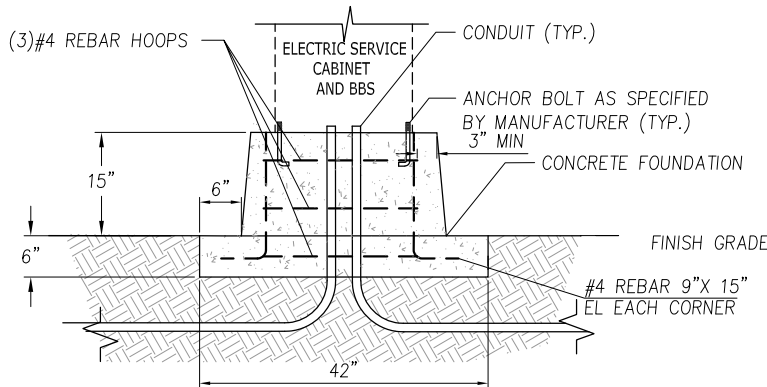
IS-02



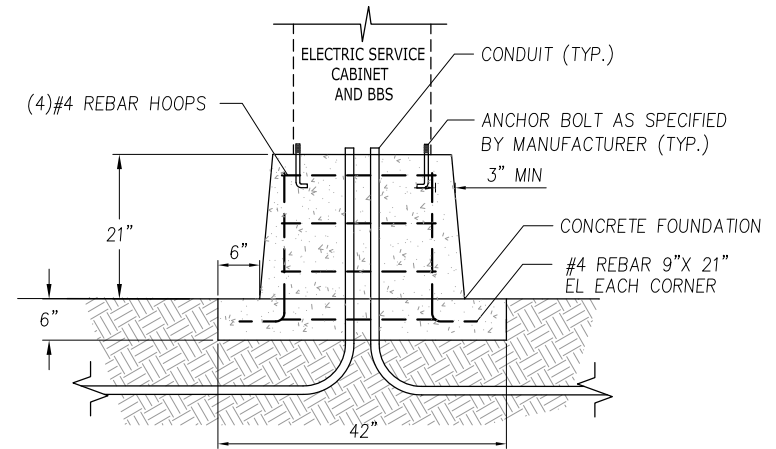
PLAN

GENERAL NOTES:

1. MATERIALS AND CONSTRUCTION REQUIREMENTS SHALL BE PER LATEST EDITION OF WSDOT STANDARD SPECIFICATIONS FOR ROAD, BRIDGE, AND MUNICIPAL CONSTRUCTION.
2. CONTRACTOR TO VERIFY FOUNDATION SIZE, ANCHOR BOLT LOCATION, AND CONDUIT LOCATION BASED ON APPROVED EQUIPMENT SHOP DRAWINGS PRIOR TO CONSTRUCTION.
3. PHOTO CELL GENERATOR SWITCH AND UTILITY PURVEYOR ACCESS DOOR SHALL BE 24" CLEAR OF OTHER OBJECTS.
4. 3/8 IN. Ø PLASTIC DRAIN TUBE SHALL BE PROVIDED FROM BASE OF CABINET TO TOP OF CONCRETE PAD AT HOUSE SIDE OF CONCRETE PEDESTAL.
5. SERVICE CABINET GROUNDING CONDUIT NOT SHOWN. CONDUIT SHALL BE RCM. SEE WSDOT STANDARD PLAN J-60.05-01 FOR TYPICAL GROUNDING DETAILS. NO GROUND RODS SHALL BE INSTALLED IN PEDESTAL.
6. CONCRETE PAD SHALL HAVE A BRUSHED FINISH. THE CONCRETE PEDESTAL TOP SHALL HAVE SMOOTH, TROWEL FINISH, WITH 0.5 IN. ROUND FILLET ON OUTSIDE TOP EDGE.
7. SEAL CONCRETE PEDESTAL TOP WITH SILVER PAINT. APPLY ADEQUATE OUTDOOR SEALANT JUST PRIOR TO PLACING CABINET. SEAL CABINET TO CONCRETE PEDESTAL. APPLY DRESS BEADING AROUND CABINET TO COMPLETE SEAL. REFER TO SPECIAL PROVISIONS FOR ADDITIONAL INFORMATION.
8. SERVICE CONDUIT INTO THE SERVICE CABINET SHOULD FOLLOW LOCAL POWER UTILITY SPECIFICATION; PLACEMENT TO MATCH SERVICE CABINET CONSTRUCTION. UTILITY MAY REQUIRE A DATA CONDUIT.
9. BBS = BATTERY BACK-UP SYSTEM.



ELECTRICAL SERVICE CABINET OVER 57" TALL ELEVATION



ELECTRICAL SERVICE CABINET UP TO 57" TALL ELEVATION

APPROVED FOR PUBLICATION

Paul A. Bucich
Paul A. Bucich, P.E.
PUBLIC WORKS DIRECTOR/CITY ENGINEER

01/10/20
DATE

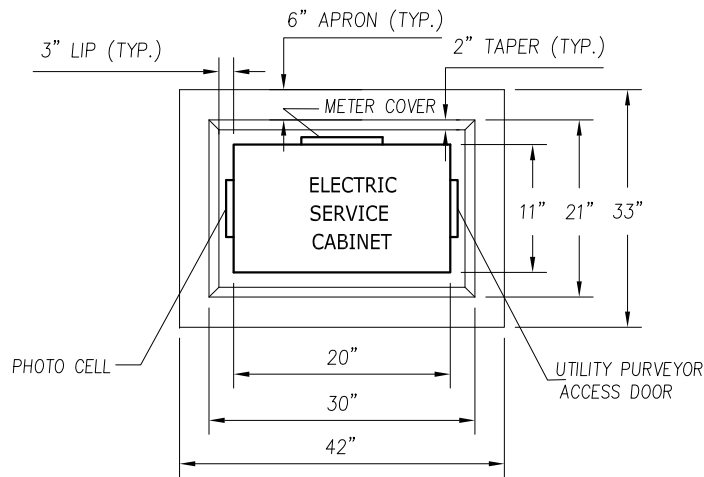


Public Works Department

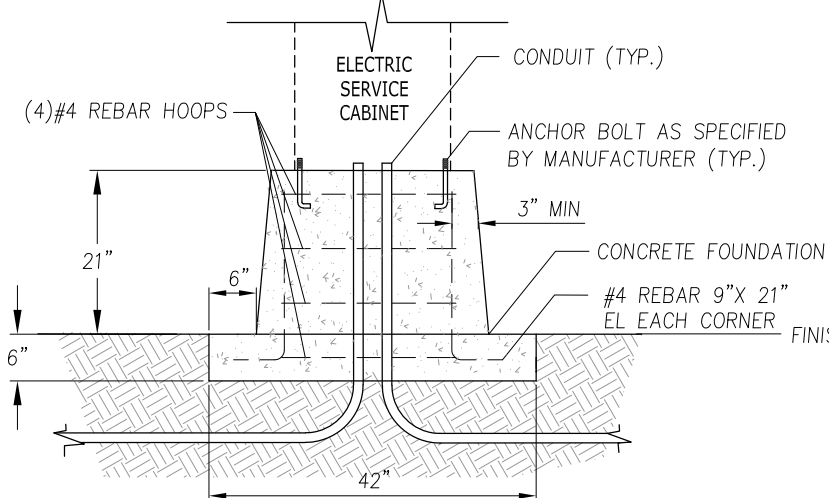
DATE	REVISION DESCRIPTION	BY	APPROVED
11/05/19	ORIGINAL DRAWING	AD/CD	PAB
6000 Main Street SW 98499		NOT TO SCALE	

**Service and BBS
Cabinet Pedestal**

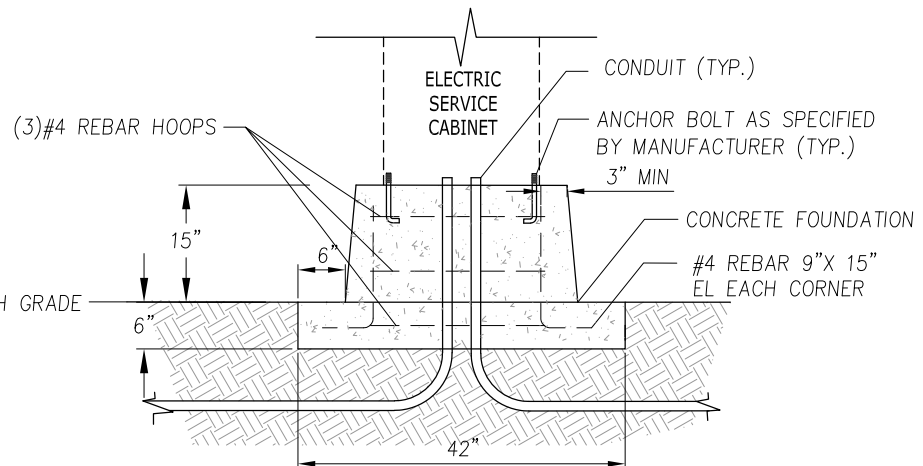
IS-03



PLAN



**ELECTRICAL SERVICE CABINET UP TO 57" TALL
ELEVATION**



**ELECTRICAL SERVICE CABINET OVER 57" TALL
ELEVATION**

GENERAL NOTES:

1. MATERIALS AND CONSTRUCTION REQUIREMENTS SHALL BE PER LATEST EDITION OF WSDOT STANDARD SPECIFICATIONS FOR ROAD, BRIDGE, AND MUNICIPAL CONSTRUCTION.
2. CONTRACTOR TO VERIFY FOUNDATION SIZE, ANCHOR BOLT LOCATION, AND CONDUIT LOCATION BASED ON APPROVED EQUIPMENT SHOP DRAWINGS PRIOR TO CONSTRUCTION.
3. PHOTO CELL GENERATOR SWITCH AND UTILITY PURVEYOR ACCESS DOOR SHALL BE 24" CLEAR OF OTHER OBJECTS.
4. 3/8 IN. Ø PLASTIC DRAIN TUBE SHALL BE PROVIDED FROM BASE OF CABINET TO TOP OF CONCRETE PAD AT HOUSE SIDE OF CONCRETE PEDESTAL.
5. SERVICE CABINET GROUNDING CONDUIT NOT SHOWN. CONDUIT SHALL BE RCM. SEE WSDOT STANDARD PLAN J-60.05-01 FOR TYPICAL GROUNDING DETAILS. NO GROUND RODS SHALL BE INSTALLED IN PEDESTAL.
6. CONCRETE PAD SHALL HAVE A BRUSHED FINISH. THE CONCRETE PEDESTAL TOP SHALL HAVE SMOOTH, TROWEL FINISH, WITH 0.5 IN. ROUND FILLET ON OUTSIDE TOP EDGE.
7. SEAL CONCRETE PEDESTAL TOP WITH SILVER PAINT. APPLY ADEQUATE OUTDOOR SEALANT JUST PRIOR TO PLACING CABINET. SEAL CABINET TO CONCRETE PEDESTAL. APPLY DRESS BEADING AROUND CABINET TO COMPLETE SEAL. REFER TO SPECIAL PROVISIONS FOR ADDITIONAL INFORMATION.
8. SERVICE CONDUIT INTO THE SERVICE CABINET SHOULD FOLLOW LOCAL POWER UTILITY SPECIFICATION; PLACEMENT TO MATCH SERVICE CABINET CONSTRUCTION. UTILITY MAY REQUIRE A DATA CONDUIT.

APPROVED FOR PUBLICATION

Paul A. Bucich
Paul A. Bucich, P.E.
PUBLIC WORKS DIRECTOR/CITY ENGINEER

01/10/20
DATE



Public Works Department

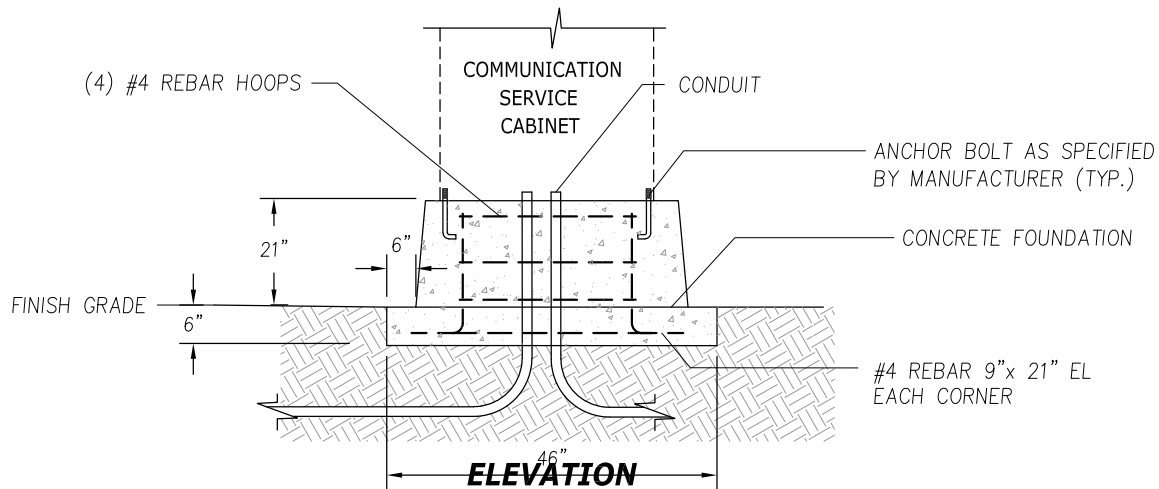
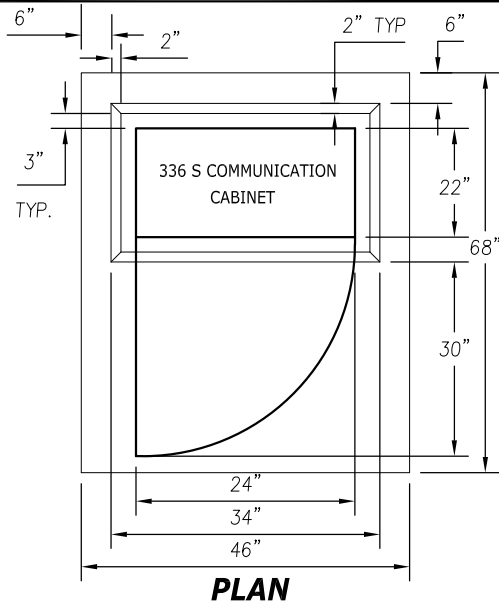
DATE	REVISION DESCRIPTION	BY	APPROVED
11/05/19	ORIGINAL DRAWING	AD/CD	PAB

6000 Main Street SW 98499

NOT TO SCALE

**Service Cabinet
Pedestal**

IS-04



GENERAL NOTES:

1. MATERIAL AND CONSTRUCTION REQUIREMENTS SHALL BE PER LATEST EDITION OF WSDOT STANDARD SPECIFICATIONS FOR ROAD, BRIDGE, AND MUNICIPAL CONSTRUCTION.
2. CONTRACTOR TO VERIFY FOUNDATION SIZE, ANCHOR BOLT LOCATION, AND CONDUIT LOCATION BASED ON APPROVED EQUIPMENT SHOP DRAWINGS PRIOR TO CONSTRUCTION.
3. $\frac{3}{8}$ IN. ϕ PLASTIC DRAIN TUBE SHALL BE PROVIDED FROM BASE OF CABINET TO TOP OF CONCRETE PAD AT HOUSE SIDE OF CONCRETE PEDESTAL.
4. CONCRETE PAD SHALL HAVE A BRUSHED FINISH. THE CONCRETE PEDESTAL TOP SHALL HAVE SMOOTH, TROWEL FINISH, WITH 0.5 IN. ROUND FILLET ON OUTSIDE TOP EDGE.
5. SEAL CONCRETE PEDESTAL TOP WITH SILVER PAINT. APPLY ADEQUATE OUTDOOR SEALANT JUST PRIOR TO PLACING CABINET. SEAL CABINET TO CONCRETE PEDESTAL. APPLY DRESS BEADING AROUND CABINET TO COMPLETE SEAL. REFER TO SPECIAL PROVISIONS FOR ADDITIONAL INFORMATION.

APPROVED FOR PUBLICATION

Paul A. Bucich 01/10/20
 Paul A. Bucich, P.E.
 PUBLIC WORKS DIRECTOR/CITY ENGINEER



Public Works Department

DATE	REVISION DESCRIPTION	BY	APPROVED
11/05/19	ORIGINAL DRAWING	AD/CD	PAB

6000 Main Street SW 98499

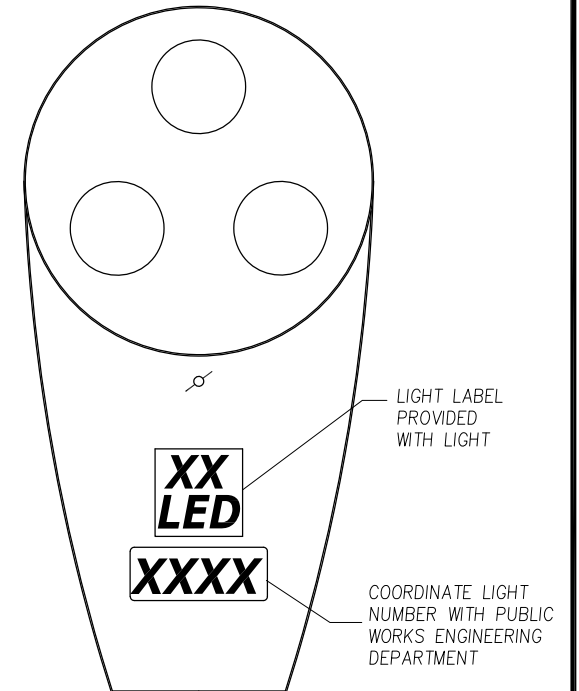
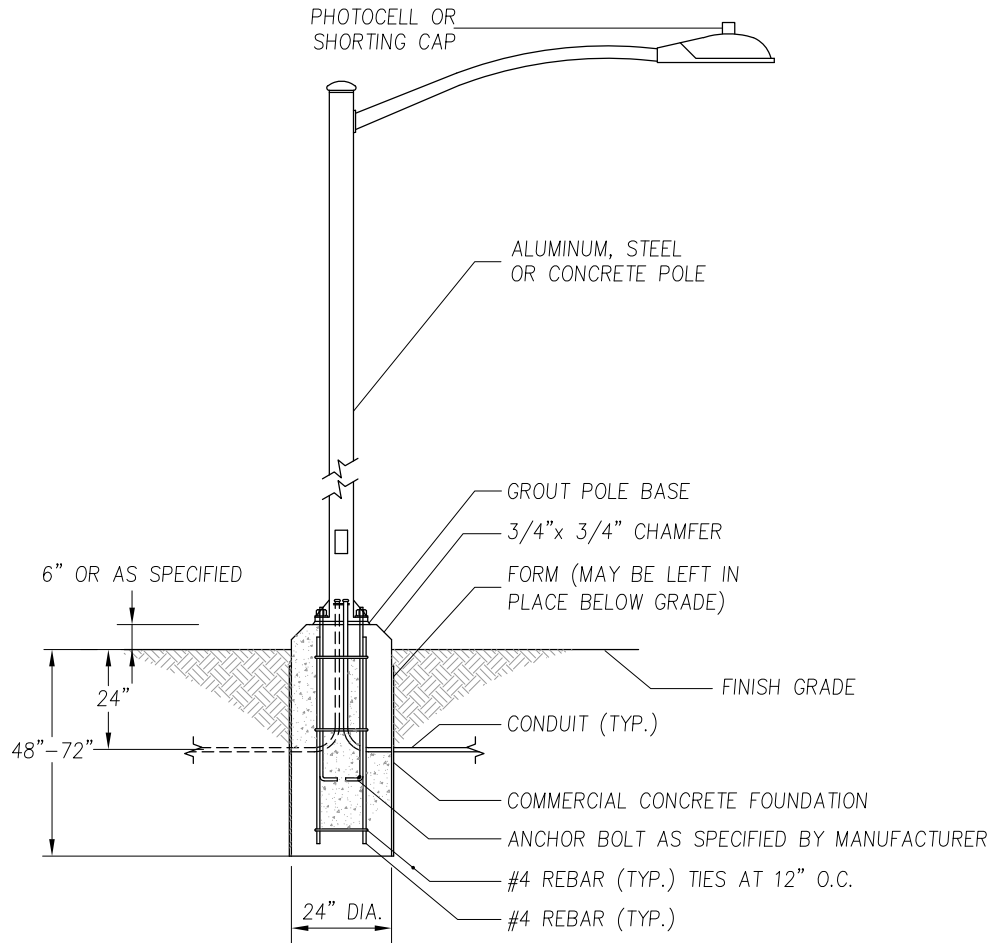
NOT TO SCALE

336 S Communication Service Cabinet Pedestal

IS-05

GENERAL NOTES:

1. MATERIALS AND CONSTRUCTION REQUIREMENTS SHALL BE PER CITY OF LAKEWOOD ENGINEERING STANDARDS MANUAL SECTION 9.1.
2. FOUNDATION DEPTH SHALL BE 48" FOR ALUMINUM AND STEEL POLES AND 72" FOR CONCRETE POLES.
3. IF A STREET LIGHT IS PLACED IN A SIDEWALK, THE TOP OF THE FOUNDATION SHALL BE FLUSH WITH THE TOP OF SIDEWALK, AND THE FOUNDATION SHALL NOT INCLUDE A CHAMFER.



STREET LIGHT LABELING

APPROVED FOR PUBLICATION

Paul A. Bucich
Paul A. Bucich, P.E.
 PUBLIC WORKS DIRECTOR/CITY ENGINEER

01/10/20
 DATE

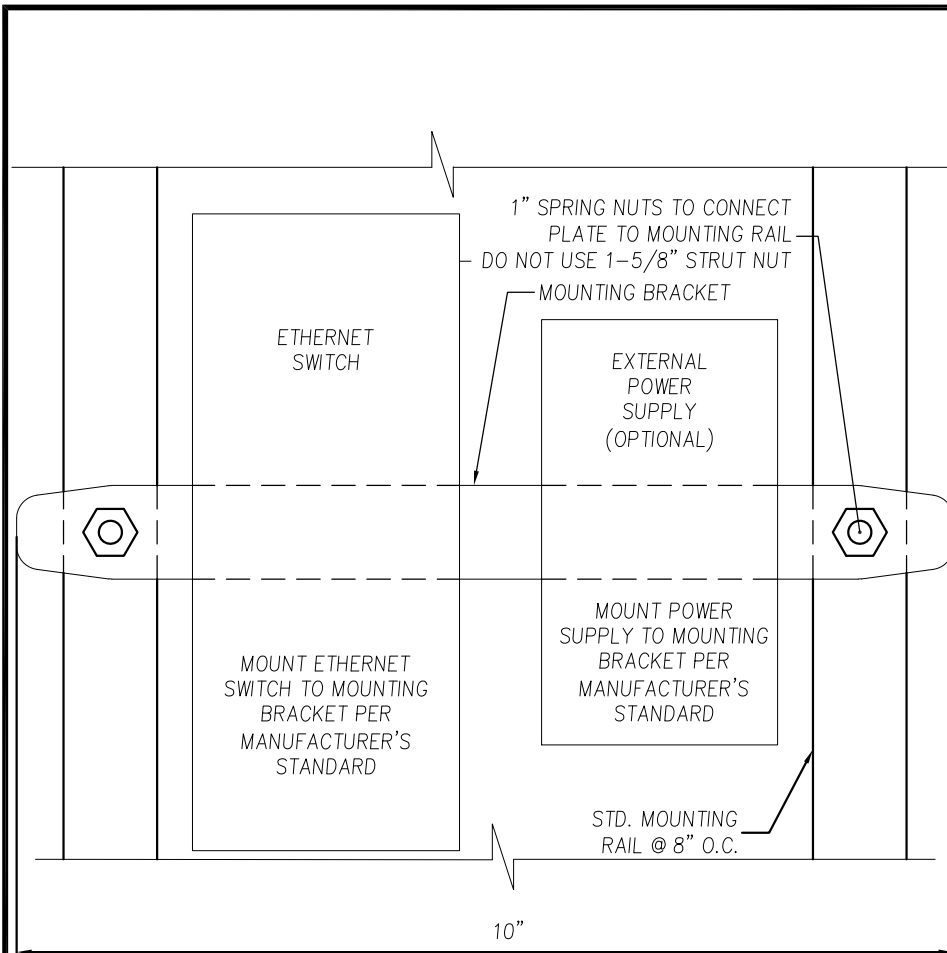


Public Works Department

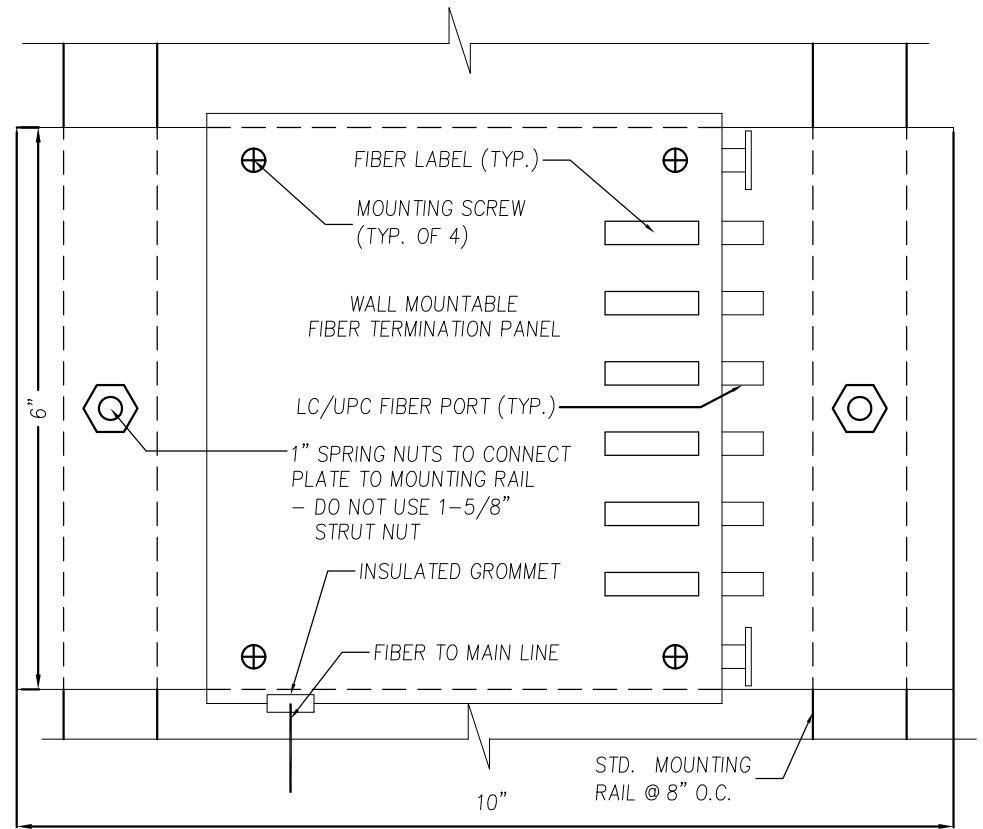
DATE	REVISION DESCRIPTION	BY	APPROVED
11/05/19	ORIGINAL DRAWING	AD/CD	PAB
6000 Main Street SW 98499		NOT TO SCALE	

Street Lights

IS-06



ETHERNET SWITCH PANEL DETAIL



FIBER PATCH PANEL DETAIL

APPROVED FOR PUBLICATION

Paul A. Bucich 01/10/20
 Paul A. Bucich, P.E. DATE
 PUBLIC WORKS DIRECTOR/CITY ENGINEER



Public Works Department

DATE	REVISION DESCRIPTION	BY	APPROVED
11/05/19	ORIGINAL DRAWING	AD/CD	PAB

6000 Main Street SW 98499

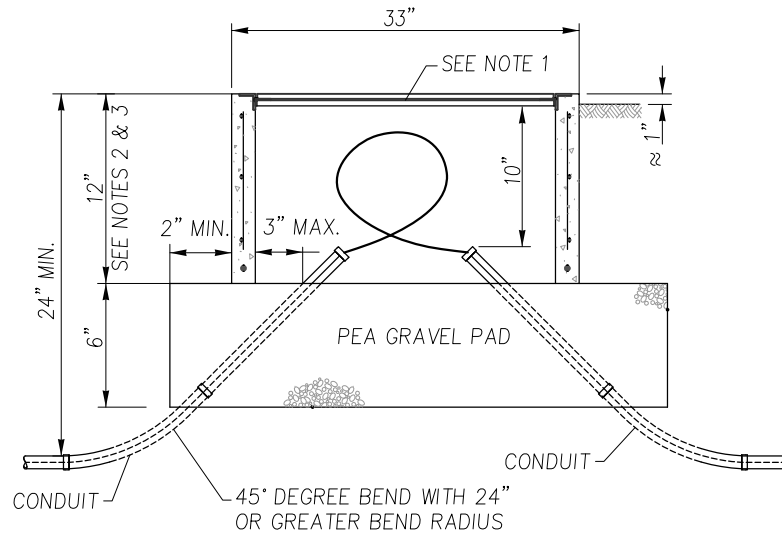
NOT TO SCALE

Fiber Interconnect and Cabinet Panel Details

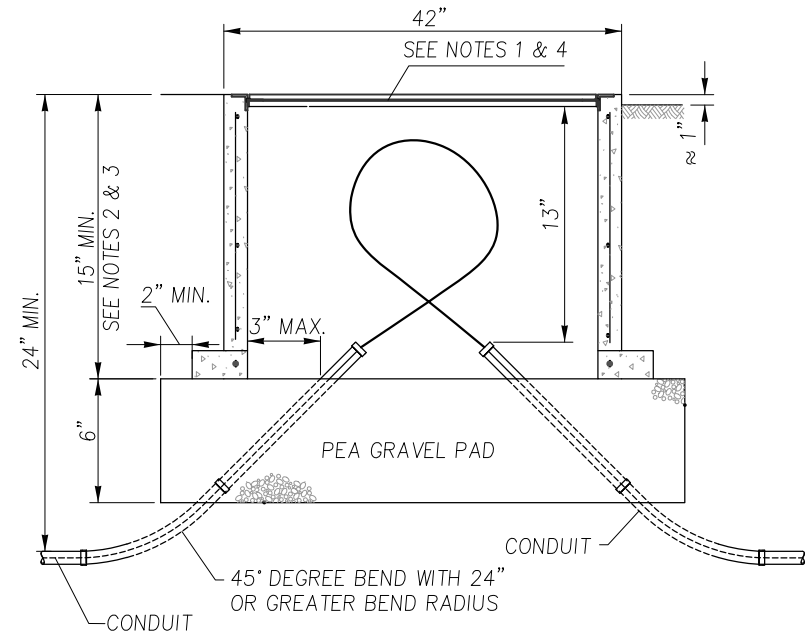
IS-07

GENERAL NOTES:

1. SEE WSDOT STANDARD PLANS FOR JUNCTION BOX DETAILS.
2. THE JUNCTION BOX TYPE 2 SHALL BE PROVIDED WITH A 12" DEEP EXTENSION WHEN SPECIFIED IN THE CONTRACT.
3. THE JUNCTION BOX TYPE 8 SHALL BE PROVIDED WITH A 12" DEEP EXTENSION WHEN SPECIFIED IN THE CONTRACT.
4. ALL JUNCTION BOXES SHALL BE PROVIDED WITH LOCKING LIDS.



TYPE 2



TYPE 8

APPROVED FOR PUBLICATION

Paul A. Bucich
 Paul A. Bucich, P.E.
 PUBLIC WORKS DIRECTOR/CITY ENGINEER

01/10/20
 DATE



Public Works Department

DATE	REVISION DESCRIPTION	BY	APPROVED
9/10/10	ORIGINAL DRAWING	TRN	DEW
2/26/12	REVISED DRAWING	LC/JH	DEW
1/16/19	REVISED DRAWING	AD	PAB

6000 Main Street SW 98499

NOT TO SCALE

**Fiber Junction Box
 Types 2 and 8**

IS-08

FURNISH AND INSTALL CUSTOM PELCO EM1109 MOD SMRI - 2ILW2X BRACKET

BOLT J HOOK 3" FROM TOP OF POLE. INSTALL "KELLEMS" CABLE SUPPORT GRIP

DRILL HOLE ON SIDE OF LUMINAIRE ARM

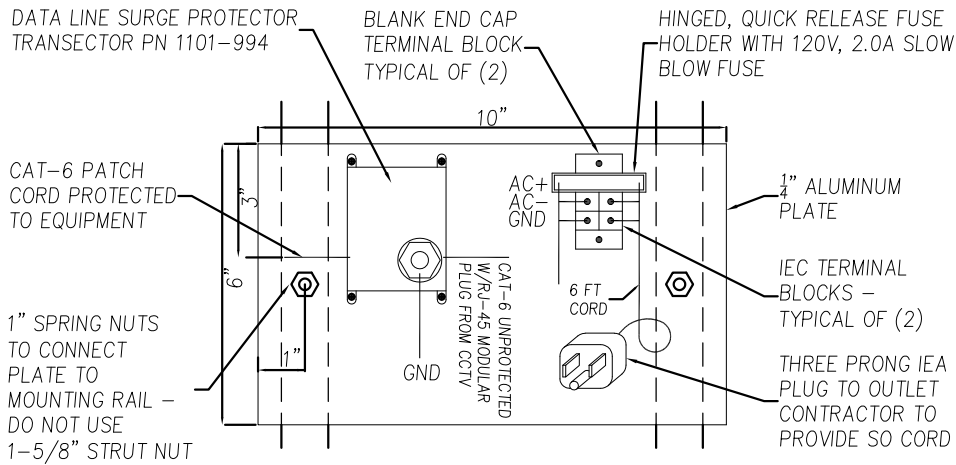
ADJUST BRACKET TO LEVEL CAMERA

ROUTE CAMERA PIGTAIL INTO DRILL HOLE. LOOP CAMERA CONTROL CABLE TO ALLOW ACCESS TO MS-TYPE CONNECTOR

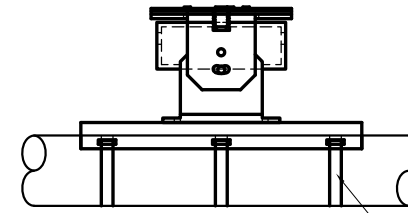
DRIP LOOP

ROUTE CABLE TO HANDHOLE PER WIRE NOTES

PTZ CAMERA MOUNTING DETAIL



PTZ TERMINATION PANEL



ASSEMBLED SIDE VIEW

SECURE MOUNTING BRACKET WITH STEEL CABLE TIES (TYP.)

EPP MOUNT

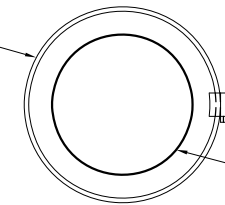
FLANGE BRACKET

BASE BRACKET

5 OUTLET, WEATHERPROOF GANG BOX

MOUNT CRADLE

STEEL CABLE TIE



EXPLODED END VIEW

LUMINAIRE ARM

THREADED NIPPLE

PTZ CAMERA CABLE

CGB FITING WITH CRUSH RING

CLOSURE PLUG TO BE INSTALLED ON ALL UNUSED OUTLETS

PTZ CAMERA CABLE

GANG BOX ASSEMBLY DETAIL

PTZ CAMERA MOUNTING BRACKET

APPROVED FOR PUBLICATION

Paul A. Bucich
Paul A. Bucich, P.E.
PUBLIC WORKS DIRECTOR/CITY ENGINEER

01/10/20
DATE



Public Works Department

DATE	REVISION DESCRIPTION	BY	APPROVED
12/27/19	ORIGINAL DRAWING	AD/CD	PAB

6000 Main Street SW 98499

NOT TO SCALE

PTZ Camera Mount and Panel Details

IS-09