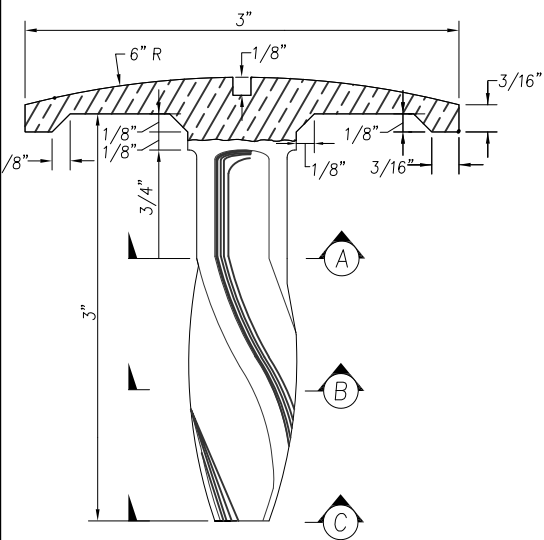
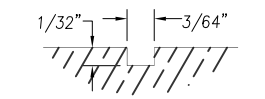
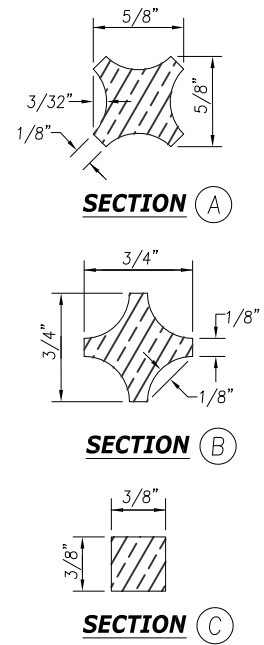


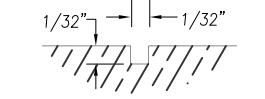
TOP VIEW
TYPE 1
BRASS DISC



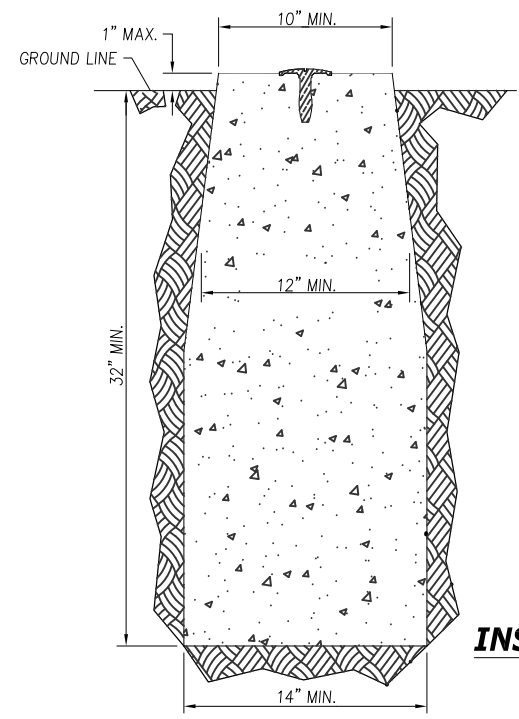
SIDE VIEW



SECTION OF GROOVE
FOR 1/4" LETTERS



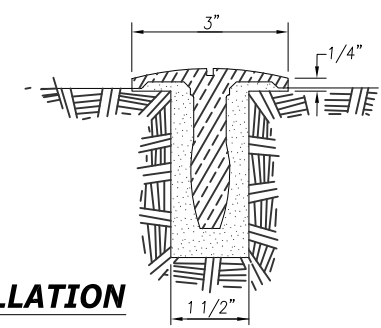
SECTION OF GROOVE
FOR 3/16" LETTERS



SECTION VIEW OF GENERAL
INSTALLATION

GENERAL NOTES:

1. THE TEXT IN THE SHADED AREA (SEE "TOP VIEW") SHALL BE 3/16" HIGH AND WILL BE STAMPED BY WSDOT PERSONNEL PRIOR TO SETTING THE CAP. ONLY THE ASSIGNED IDENTIFICATION LETTERS AND NUMBERS ARE TO BE PLACED ON THE BRASS DISC.
2. THE HOLE SHALL BE 32" MINIMUM IN DEPTH OR 6" BELOW THE DEEPEST RECORDED FROST LINE. ALL LOOSE MATERIAL SHALL BE REMOVED FROM THE BOTTOM OF THE HOLE SO THAT THE CONCRETE IS PLACED ON FIRM UNDISTURBED EARTH.
3. THE TOP OF THE CONCRETE SHALL BE TROWELED SMOOTH AND THE BRASS DISC SET IN THE CENTER WITH TOP FLUSH AND LEVEL. WHEN THE CONCRETE IS SET, COVER THE ENTIRE MONUMENT WITH MOIST EARTH AND LEAVE FOR THREE DAYS.
4. THE TOP OF THE MONUMENT MAY BE RECESSED OR PROTRUDING, DEPENDING ON CONDITIONS.
5. TO REPLACE A GENERAL LAND OFFICE (GLO) CORNER, CONSULT A LICENSED PROFESSIONAL LAND SURVEYOR (PLS).



INSTALLATION

SECTION VIEW OF
LEDGE ROCK, CONCRETE
OR ASPHALT INSTALLATION

APPROVED FOR PUBLICATION

Paul A. Bucich, P.E.
PUBLIC WORKS DIRECTOR/CITY ENGINEER

01/10/20
DATE

CITY OF LAKEWOOD, WA
1996

Public Works Department

DATE	REVISION DESCRIPTION	BY	APPROVED
11/05/19	ORIGINAL DRAWING	AD/CD	PAB

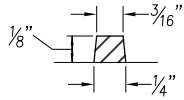
6000 Main Street SW 98499

NOT TO SCALE

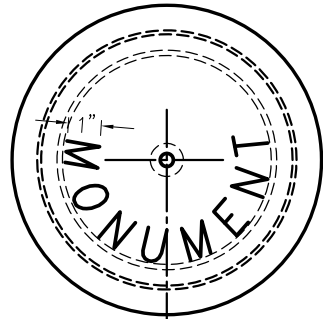
Survey Monument
Type 1 and Type 2

MI-01

MONUMENT COVER



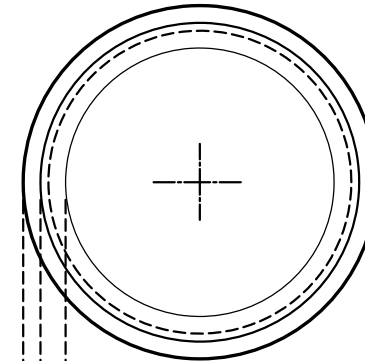
SECTION OF LETTER



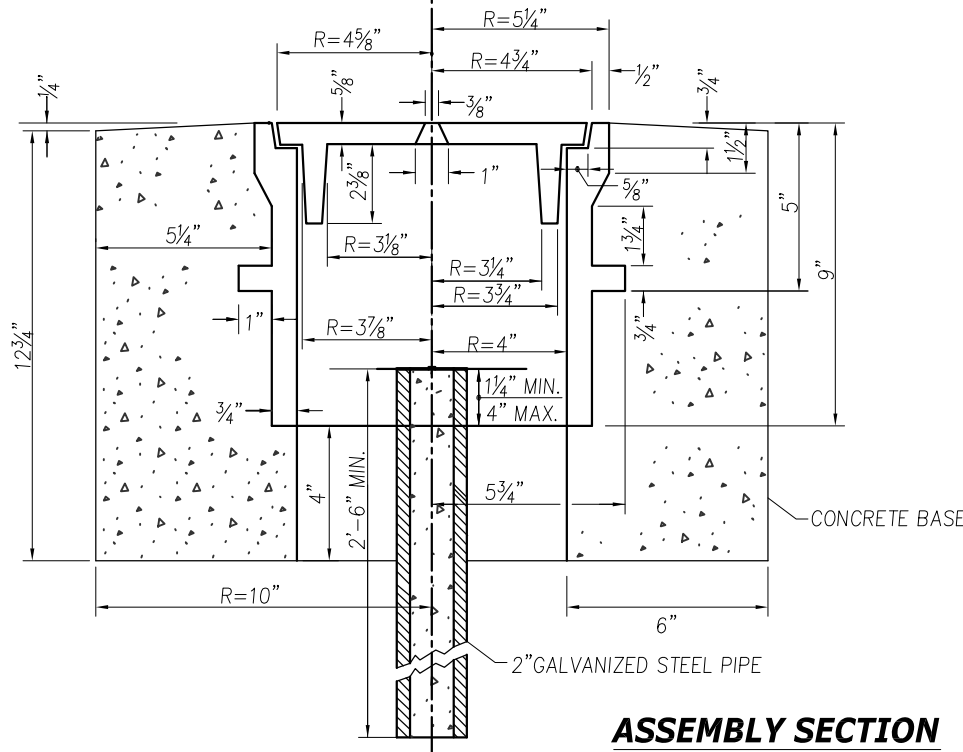
APPROXIMATE WEIGHTS

CASE	60 LBS
COVER	19 LBS
TOTAL	79 LBS

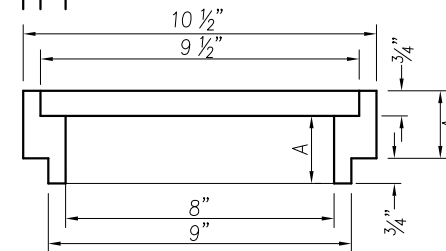
RISER RING DIMENSIONS			
A(SIZE)	1 1/2"	2"	3"



PLAN RISER RING



ASSEMBLY SECTION



SECTION RISER RING

APPROVED FOR PUBLICATION

Paul A. Bucich 01/10/20
 Paul A. Bucich, P.E.
 PUBLIC WORKS DIRECTOR/CITY ENGINEER
 DATE



Public Works Department

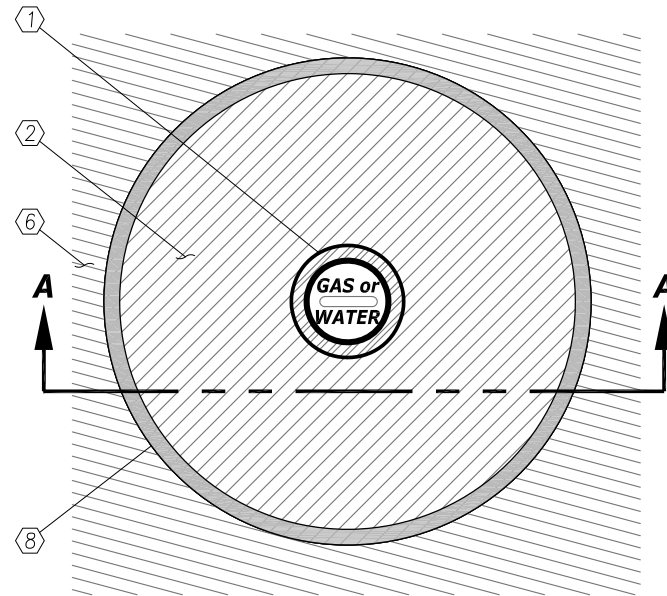
DATE	REVISION DESCRIPTION	BY	APPROVED
11/05/19	ORIGINAL DRAWING	AD/CD	PAB

6000 Main Street SW 98499

NOT TO SCALE

Monument Case and Cover

MI-02



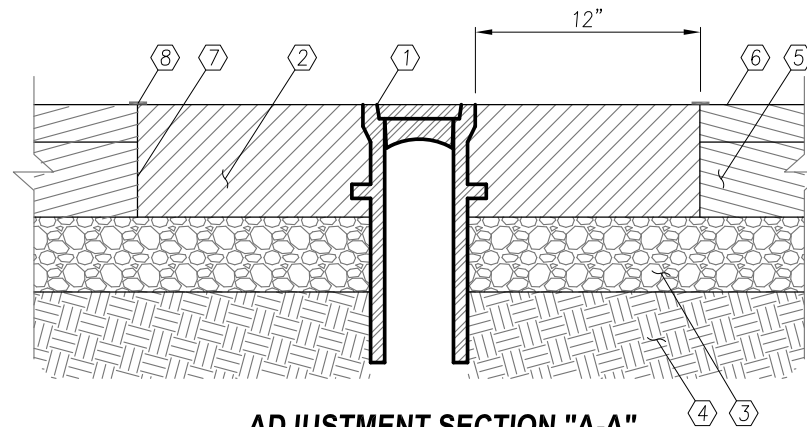
RESTORATION PLAN

CONSTRUCTION NOTES:

- ① NEW OR EXISTING FRAME AND GRATE OR SOLID LID
- ② 6" HMA (2) 3" LIFTS
- ③ 4" CSTC
- ④ COMPACTED SUBGRADE
- ⑤ EXISTING HMA
- ⑥ NEW 2" HMA OVERLAY OR HMA PATCH
- ⑦ TACK COAT
- ⑧ JOINT SEAL

GENERAL NOTES:

- 1. MATERIALS AND CONSTRUCTION REQUIREMENTS SHALL BE PER LATEST EDITION OF WSDOT STANDARD SPECIFICATIONS FOR ROAD, BRIDGE, AND MUNICIPAL CONSTRUCTION UNLESS OTHERWISE NOTED.
- 2. NEW CASTING MAY BE PROVIDED BY UTILITY.



ADJUSTMENT SECTION "A-A"

APPROVED FOR PUBLICATION

Paul A. Bucich 01/10/20
 Paul A. Bucich, P.E.
 PUBLIC WORKS DIRECTOR/CITY ENGINEER



Public Works Department

DATE	REVISION DESCRIPTION	BY	APPROVED
11/05/19	ORIGINAL DRAWING	AD/CD	PAB

6000 Main Street SW 98499

NOT TO SCALE

**Valve Casing
 Adjustment and Restoration**

MI-03