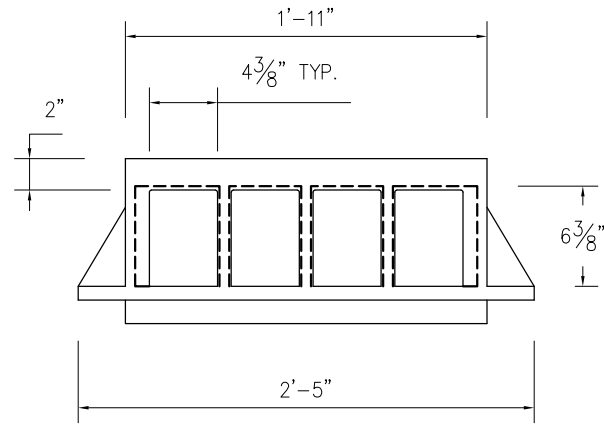
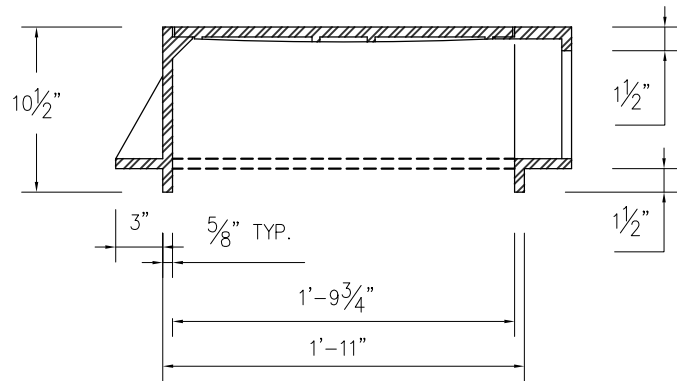


PLAN



FRONT ELEVATION



SIDE ELEVATION

APPROVED FOR PUBLICATION

Paul A. Bucich 01/10/20
 Paul A. Bucich, P.E.
 PUBLIC WORKS DIRECTOR/CITY ENGINEER



Public Works Department

DATE	REVISION DESCRIPTION	BY	APPROVED
------	----------------------	----	----------

12/27/19	ORIGINAL DRAWING	AD/CD	PAB

6000 Main Street SW 98499

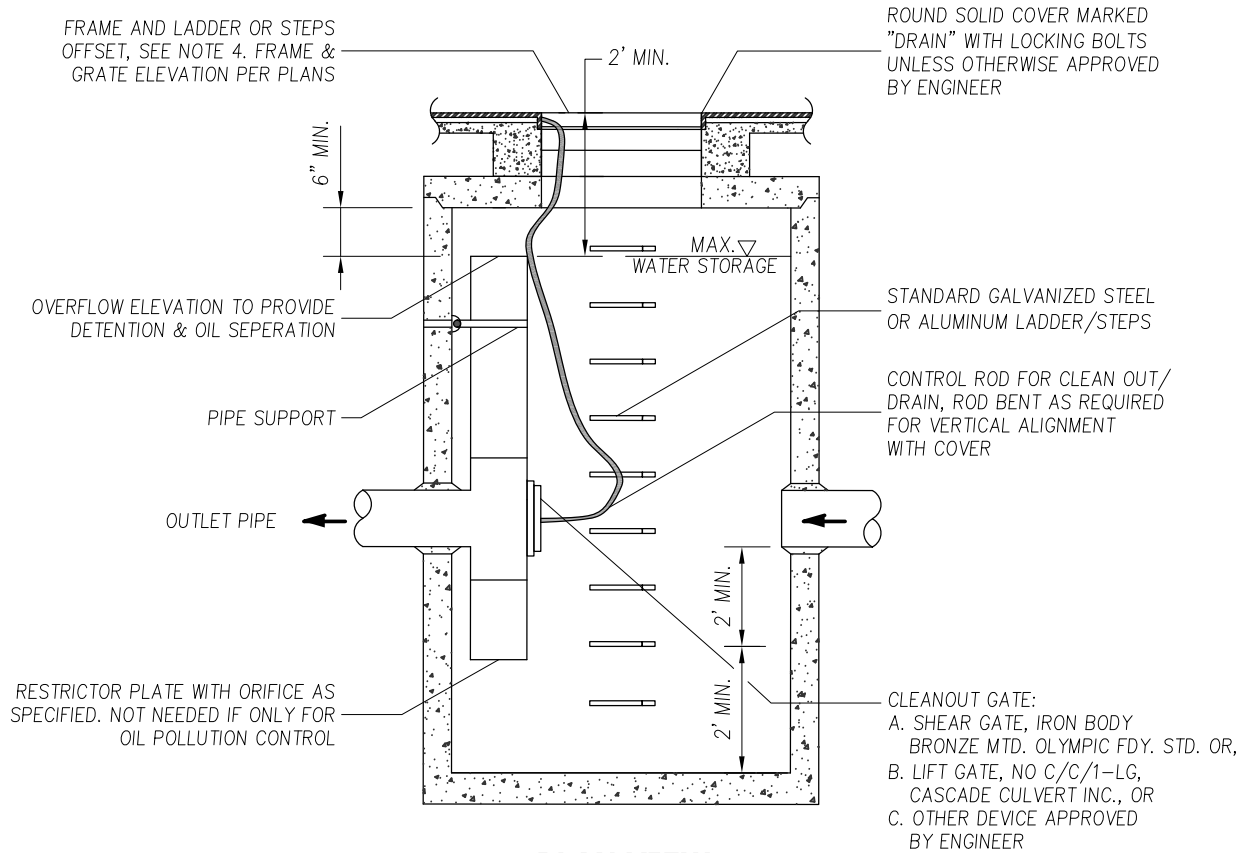
NOT TO SCALE

**Curb Inlet
 Frame and Cover**

SW-01

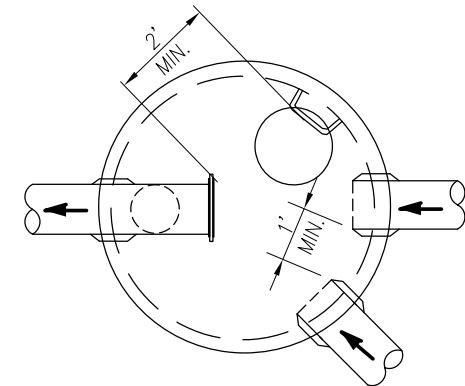
GENERAL NOTES:

1. PIPE SIZES AND SLOPES, PER PLANS.
2. OUTLET CAPACITY NOT LESS THAN COMBINED INLETS.
3. METAL PARTS:
 - A. CORROSION RESISTANT OR GALVANIZED OR ALUMINUM TYPE 2.
 - B. IF GALVANIZED STEEL PIPE, HAVE ASPHALT TREATMENT 1.
4. FRAME AND LADDER OR STEPS OFFSET SO:
 - A. CLEANOUT GATE IS VISIBLE FROM TOP.
 - B. CLIMBDOWN SPACE IS CLEAR OF RISER & CLEANOUT GATE.
 - C. FRAME IS CLEAR OF CURB.
5. STRUCTURE SHALL BE A TYPE 2 CATCH BASIN 54" MINIMUM DIAMETER.



PLAN VIEW

FLOW RESTRICTOR/OIL POLLUTION CONTROL DEVICE



TOP VIEW

APPROVED FOR PUBLICATION

Paul A. Bucich
 Paul A. Bucich, P.E.
 PUBLIC WORKS DIRECTOR/CITY ENGINEER

01/10/20
 DATE



Public Works Department

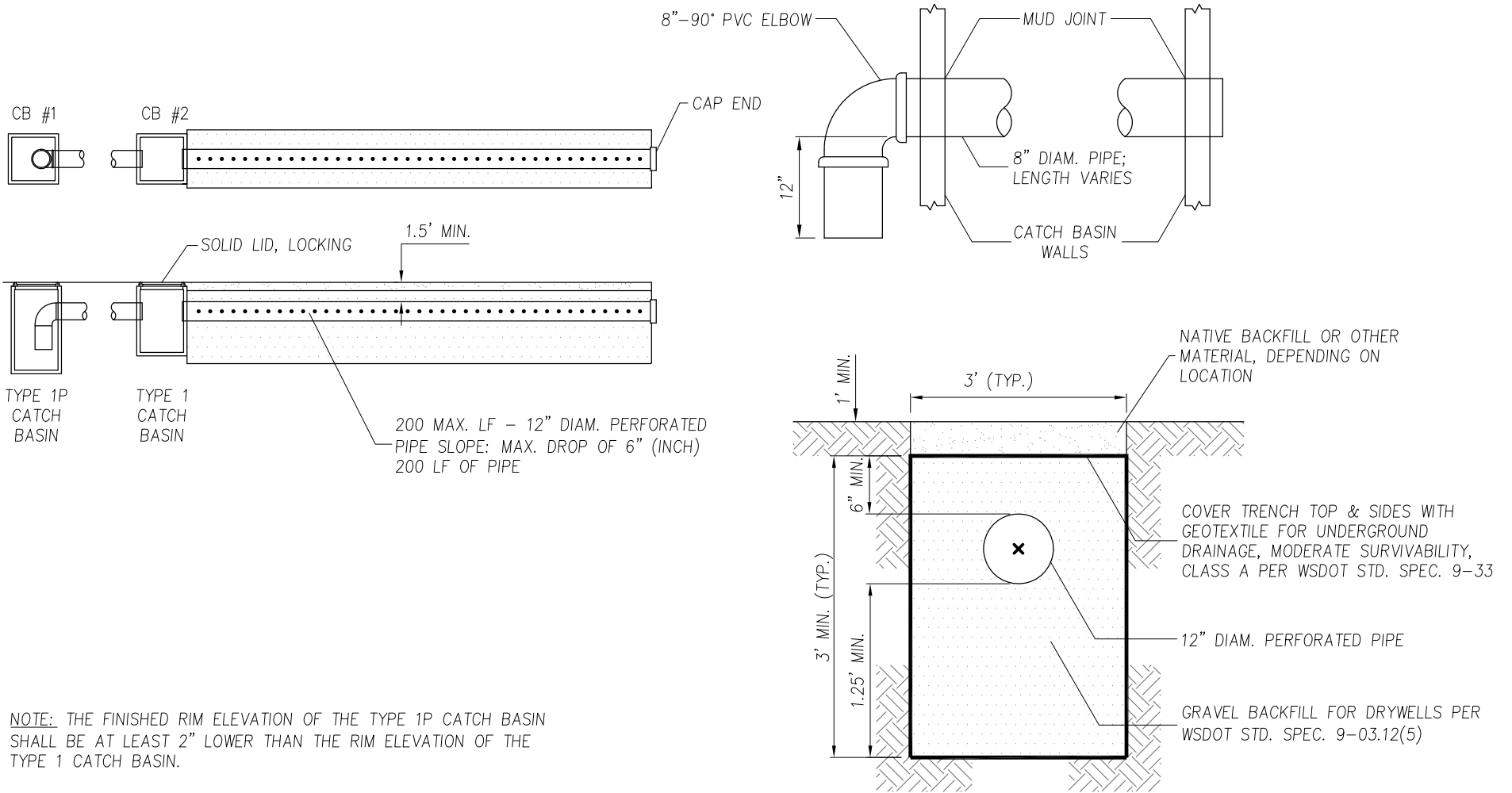
DATE	REVISION DESCRIPTION	BY	APPROVED
11/05/19	ORIGINAL DRAWING	AD/CD	PAB

6000 Main Street SW 98499

NOT TO SCALE

Flow Restrictor and Oil Pollution Control Device

SW-02



NOTE: THE FINISHED RIM ELEVATION OF THE TYPE 1P CATCH BASIN SHALL BE AT LEAST 2" LOWER THAN THE RIM ELEVATION OF THE TYPE 1 CATCH BASIN.

APPROVED FOR PUBLICATION

Paul A. Bucich 01/10/20
 Paul A. Bucich, P.E.
 PUBLIC WORKS DIRECTOR/CITY ENGINEER



Public Works Department

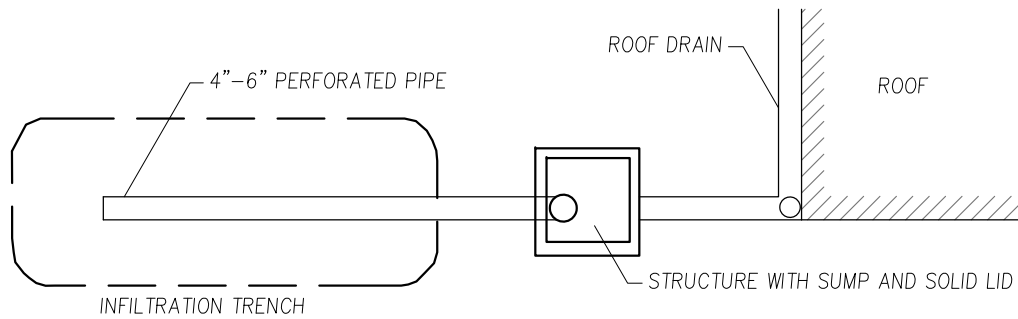
DATE	REVISION DESCRIPTION	BY	APPROVED
12/27/19	ORIGINAL DRAWING	AD/CD	PAB

6000 Main Street SW 98499

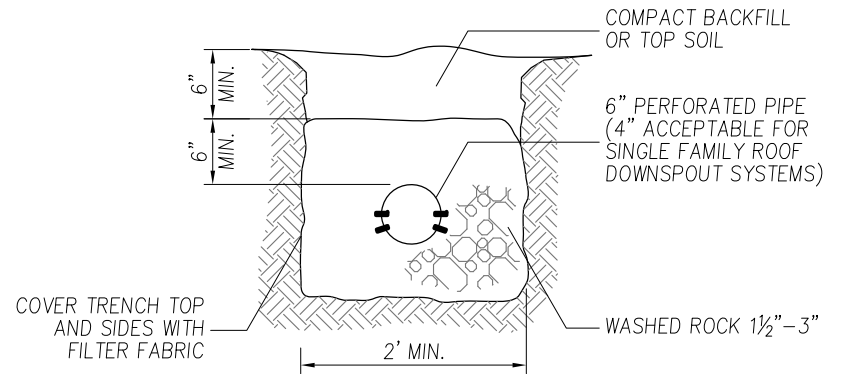
NOT TO SCALE

Infiltration Trench Detail

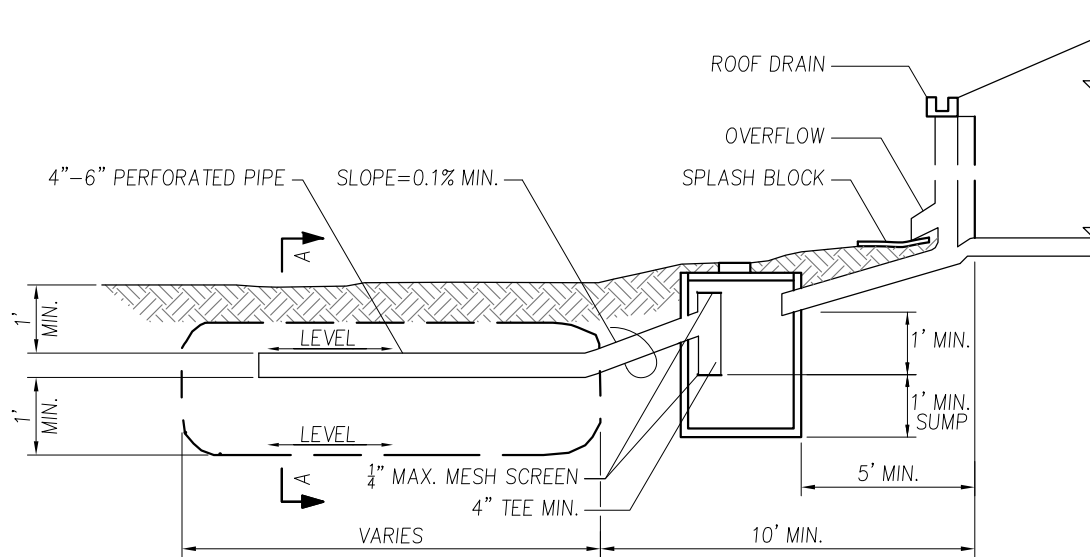
SW-03



PLAN VIEW



**SECTION A-A
INDIVIDUAL ROOF DOWNSPOUT SYSTEM**



PROFILE

APPROVED FOR PUBLICATION

Paul A. Bucich
Paul A. Bucich, P.E.
PUBLIC WORKS DIRECTOR/CITY ENGINEER

01/10/20
DATE



Public Works Department

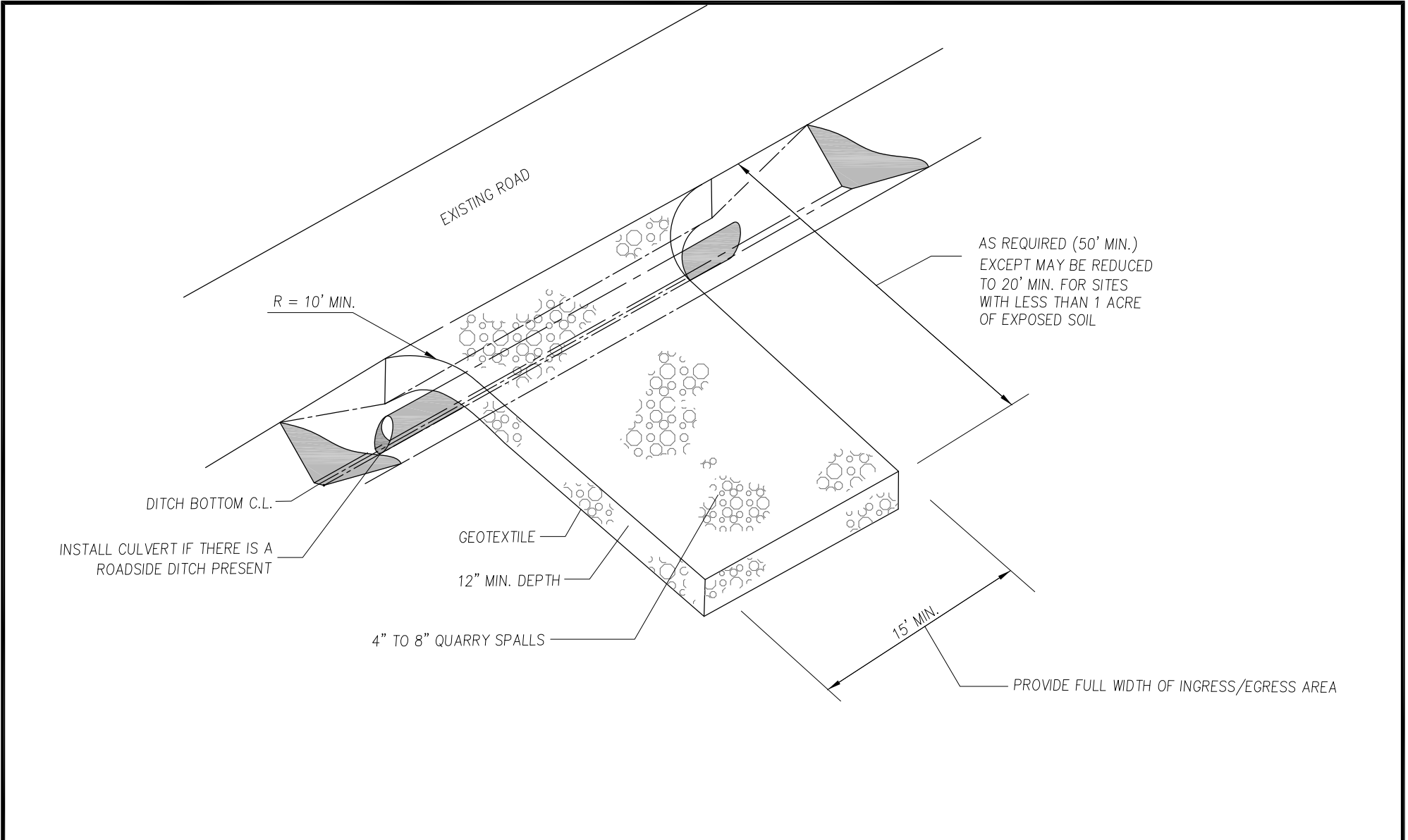
DATE	REVISION DESCRIPTION	BY	APPROVED
12/27/19	ORIGINAL DRAWING	AD/CD	PAB

6000 Main Street SW 98499

NOT TO SCALE

**Individual Roof
Downspout System**

SW-04



APPROVED FOR PUBLICATION

Paul A. Bucich
 Paul A. Bucich, P.E.
 PUBLIC WORKS DIRECTOR/CITY ENGINEER
 DATE 01/10/20



Public Works Department

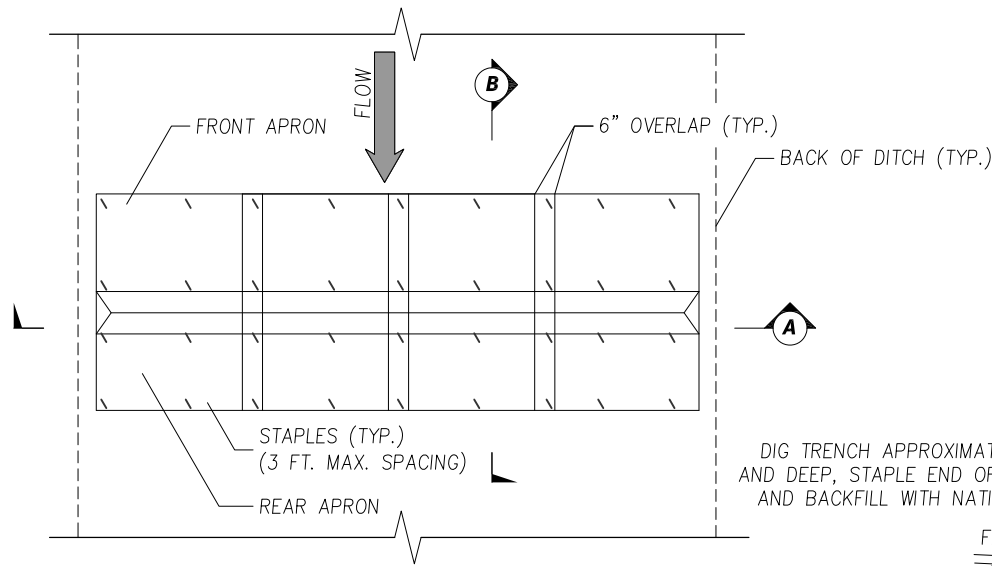
DATE	REVISION DESCRIPTION	BY	APPROVED
12/27/19	ORIGINAL DRAWING	AD/CD	PAB

6000 Main Street SW 98499

NOT TO SCALE

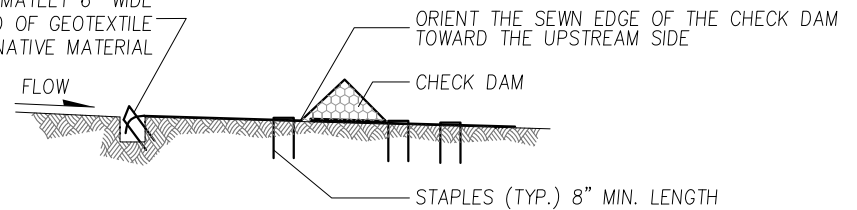
Construction Entrance Rock Pad

SW-05

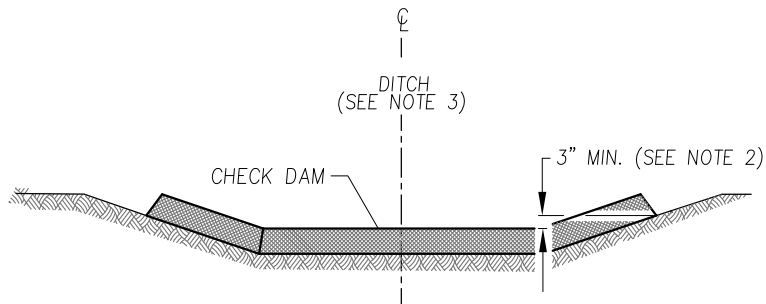


PLAN VIEW

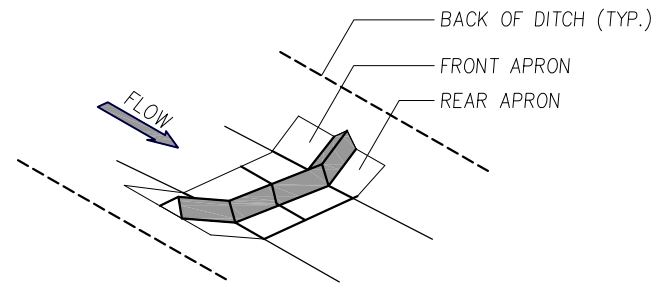
DIG TRENCH APPROXIMATELY 6" WIDE AND DEEP, STAPLE END OF GEOTEXTILE AND BACKFILL WITH NATIVE MATERIAL



SECTION B



SECTION A



ISOMETRIC VIEW

GENERAL NOTES:

1. GEOTEXTILE ENCASED CHECK DAMS SHALL MEET THE REQUIREMENTS OF STANDARD SPECIFICATIONS 8-01.3(6) AND 9-14.5(4).
2. INSTALL THE SLOPED ENDS OF THE CHECK DAM A MINIMUM OF 3" HIGHER THAN THE TOP OF THE CHECK DAM IN THE CHANNEL TO ENSURE THAT WATER FLOWS OVER THE DAM AND NOT AROUND IT.
3. FLAT BOTTOM DITCH DESIGN SHOWN, CHECK DAM INSTALLATION DETAILS ARE SIMILAR FOR "V" BOTTOM DITCHES.
4. PERFORM MAINTENANCE IN ACCORDANCE WITH STANDARD SPECIFICATION 8-01.3(15).

APPROVED FOR PUBLICATION

Paul A. Bucich 01/10/20
 Paul A. Bucich, P.E.
 PUBLIC WORKS DIRECTOR/CITY ENGINEER
 DATE



Public Works Department

DATE	REVISION DESCRIPTION	BY	APPROVED
12/27/19	ORIGINAL DRAWING	AD/CD	PAB

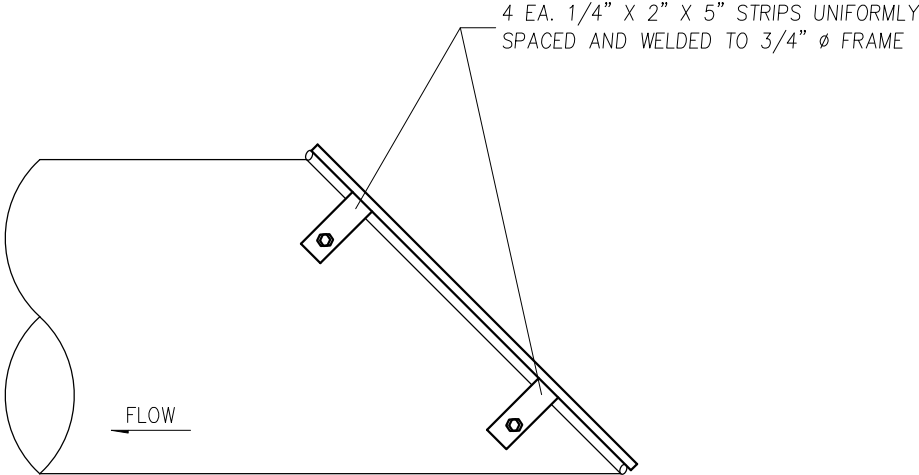
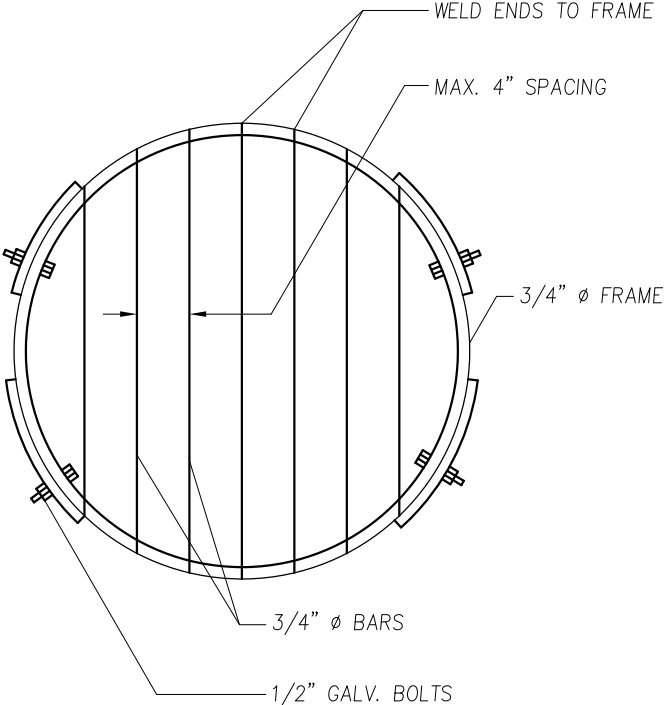
6000 Main Street SW 98499 NOT TO SCALE

**Geotextile Encased
 Check Dam
 Installation**

SW-06

GENERAL NOTES:

- 1. ALL STEEL PARTS TO BE GALVANIZED AND ASPHALT COATED (TREATMENT 1 OR BETTER).



APPROVED FOR PUBLICATION

Paul A. Bucich 01/10/20
 Paul A. Bucich, P.E.
 PUBLIC WORKS DIRECTOR/CITY ENGINEER
 DATE



Public Works Department

DATE	REVISION DESCRIPTION	BY	APPROVED
12/27/19	ORIGINAL DRAWING	AD/CD	PAB

6000 Main Street SW 98499

NOT TO SCALE

**Trash Rack
Detail**

SW-07