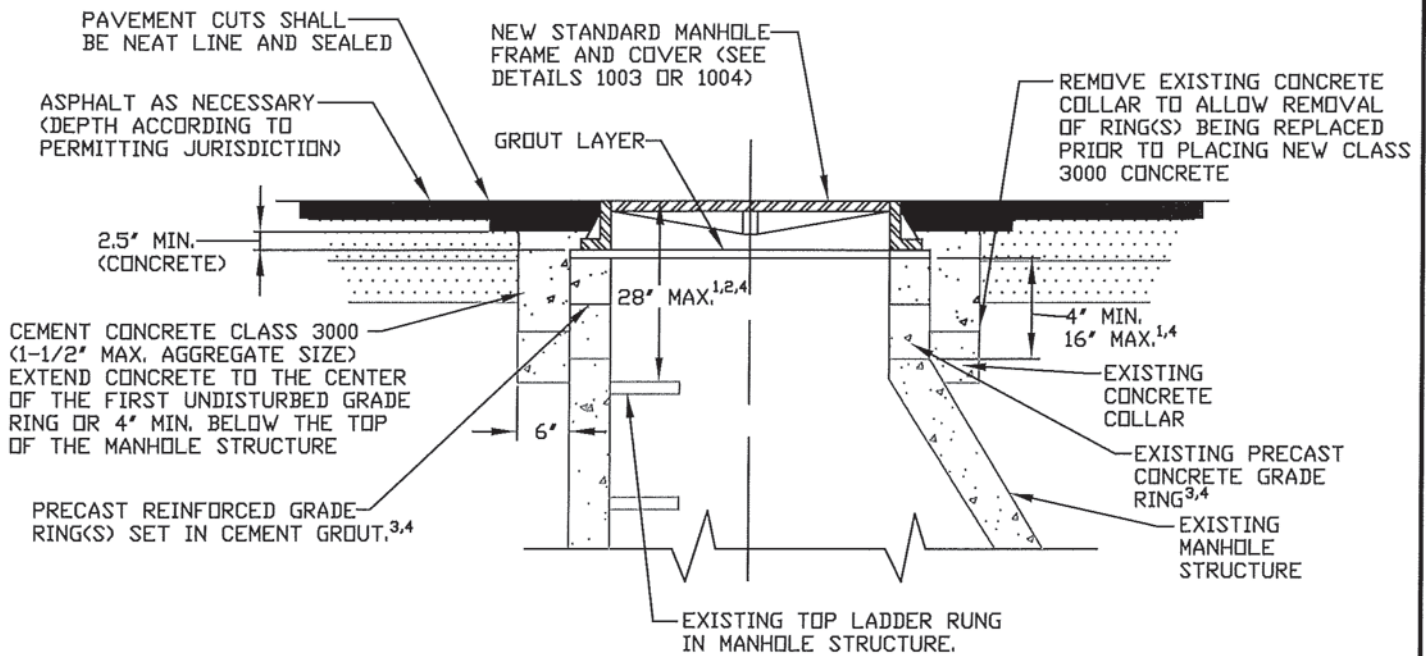
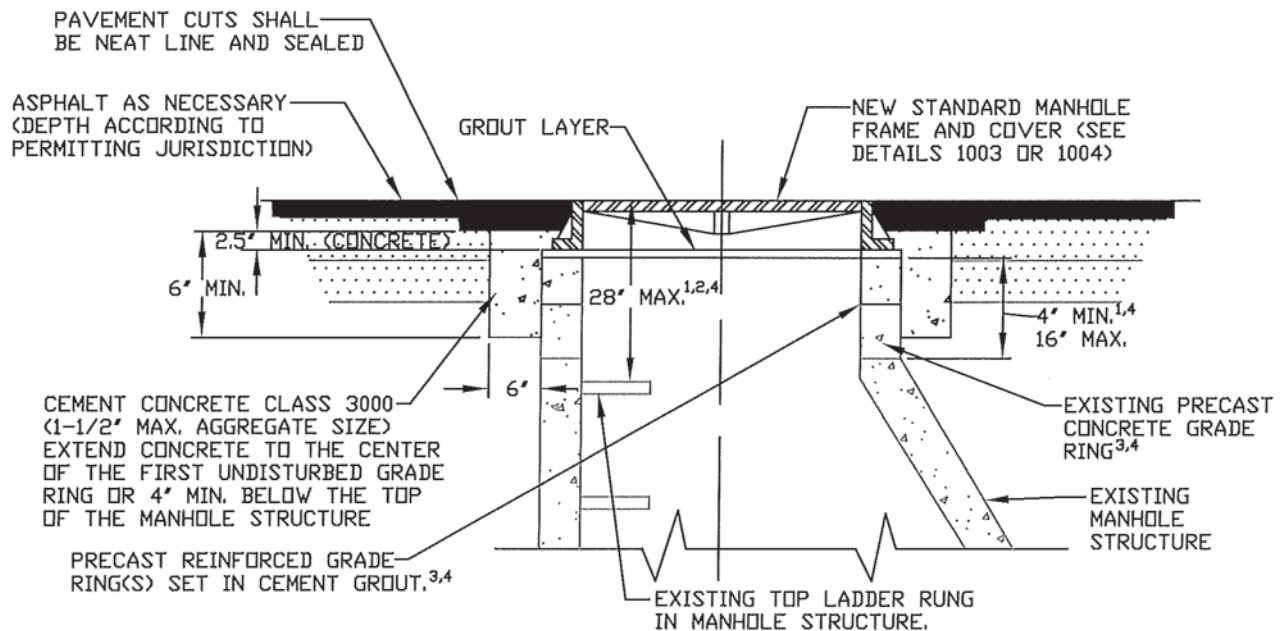

Appendix C

Standard Plans



WITH EXISTING CONCRETE COLLAR



NO EXISTING CONCRETE COLLAR

1. MAXIMUM = EXISTING + 3' ON HMA OVERLAYS UNLESS OTHERWISE APPROVED BY PIERCE COUNTY.
2. EXISTING MANHOLES THAT WILL EXCEED 28' BETWEEN THE RIM AND TOP LADDER RUNG OR PROVIDE LESS THAN 4' OF GRADE RINGS POST CONSTRUCTION SHALL BE RECONSTRUCTED PER DETAIL 2001 UNLESS OTHERWISE APPROVED BY PIERCE COUNTY. EXISTING MANHOLES EXCEEDING 28' BETWEEN THE RIM AND TOP LADDER RUNG PRIOR TO ADJUSTMENT MAY BE ELIGIBLE FOR REIMBURSEMENT BY PIERCE COUNTY.
3. BRICK OR DAMAGED GRADE RINGS SHALL BE REPLACED WITH NEW GRADE RINGS.
4. LADDER RUNGS SHALL NOT BE INSTALLED IN GRADE RINGS.



PIERCE COUNTY PLANNING & PUBLIC WORKS
SEWER DIVISION
9850 64TH STREET WEST
UNIVERSITY PLACE, WASHINGTON 98467-1078
(253) 798-4050

STANDARD DETAILS

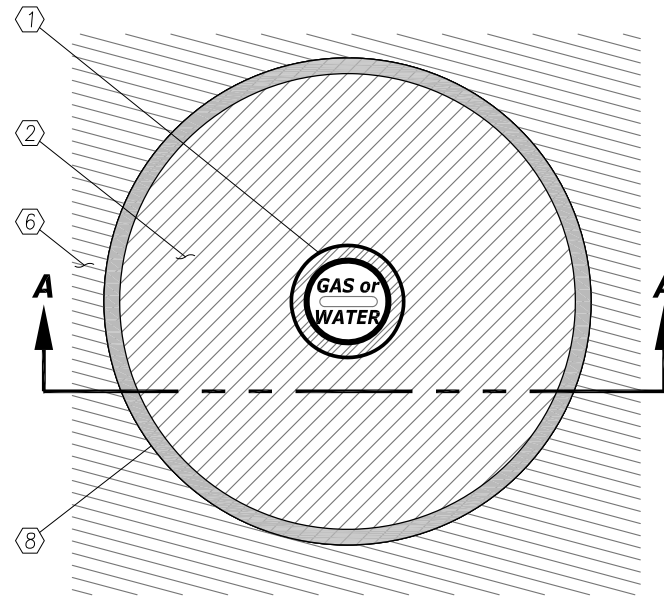
DATE
6/27/2018
SCALE
NTS

EXISTING MANHOLE ADJUSTMENT

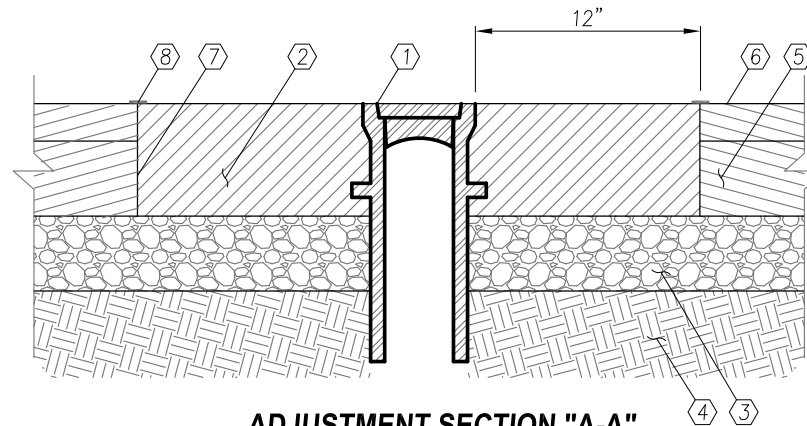
STANDARD DETAIL NO.

1002A

PAGE 1 OF 1



RESTORATION PLAN



ADJUSTMENT SECTION "A-A"

CONSTRUCTION NOTES:

- ① NEW OR EXISTING FRAME AND GRATE OR SOLID LID
- ② 6" HMA (2) 3" LIFTS
- ③ 4" CSTC
- ④ COMPACTED SUBGRADE
- ⑤ EXISTING HMA
- ⑥ NEW 2" HMA OVERLAY OR HMA PATCH
- ⑦ TACK COAT
- ⑧ JOINT SEAL

GENERAL NOTES:

- 1. MATERIALS AND CONSTRUCTION REQUIREMENTS SHALL BE PER LATEST EDITION OF WSDOT STANDARD SPECIFICATIONS FOR ROAD, BRIDGE, AND MUNICIPAL CONSTRUCTION UNLESS OTHERWISE NOTED.
- 2. NEW CASTING MAY BE PROVIDED BY UTILITY.

APPROVED FOR PUBLICATION

Paul A. Bucich
Paul A. Bucich, P.E.
PUBLIC WORKS DIRECTOR/CITY ENGINEER

01/10/20
DATE



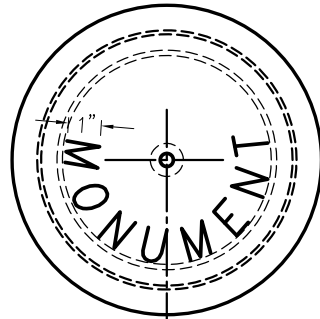
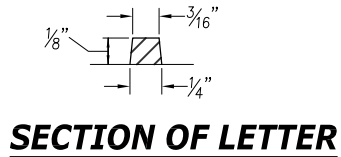
Public Works Department

DATE	REVISION DESCRIPTION	BY	APPROVED
11/05/19	ORIGINAL DRAWING	AD/CD	PAB
6000 Main Street SW 98499		NOT TO SCALE	

**Valve Casing
Adjustment and Restoration**

MI-03

MONUMENT COVER

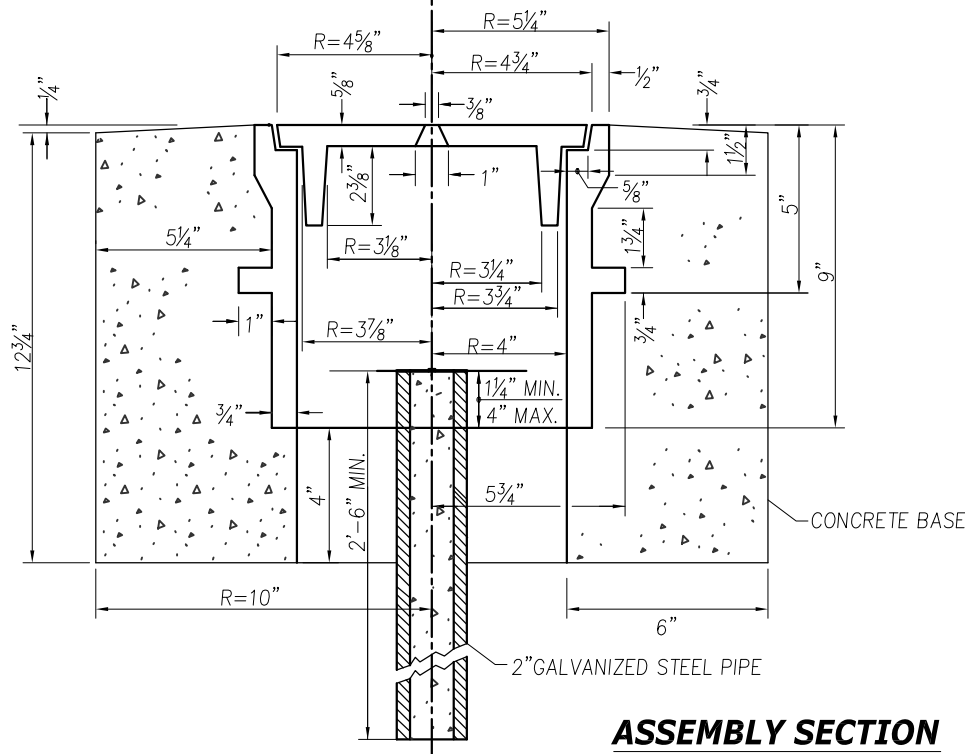
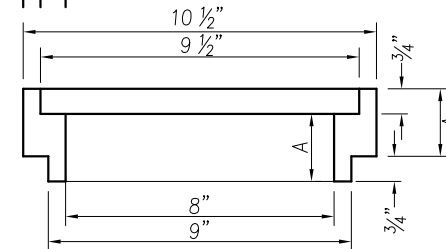
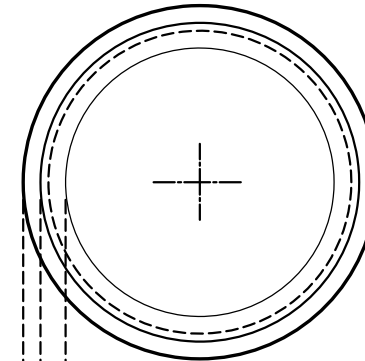


APPROXIMATE WEIGHTS

CASE	60 LBS
COVER	19 LBS
TOTAL	79 LBS

RISER RING DIMENSIONS

A(SIZE)	1 1/2"	2"	3"
---------	--------	----	----



APPROVED FOR PUBLICATION

Paul A. Bucich 01/10/20
Paul A. Bucich, P.E.
PUBLIC WORKS DIRECTOR/CITY ENGINEER
DATE



Public Works Department

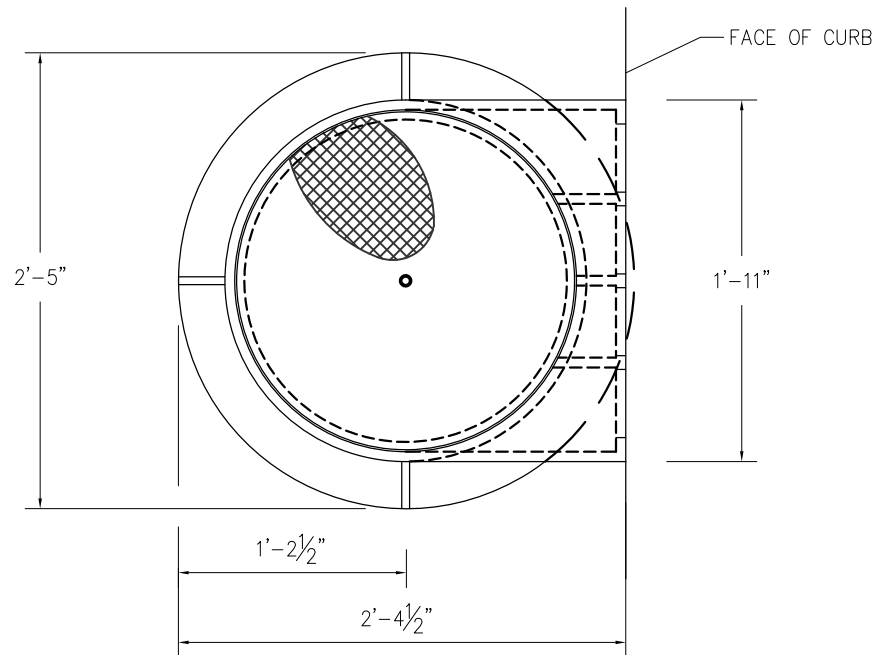
DATE	REVISION DESCRIPTION	BY	APPROVED
11/05/19	ORIGINAL DRAWING	AD/CD	PAB

6000 Main Street SW 98499

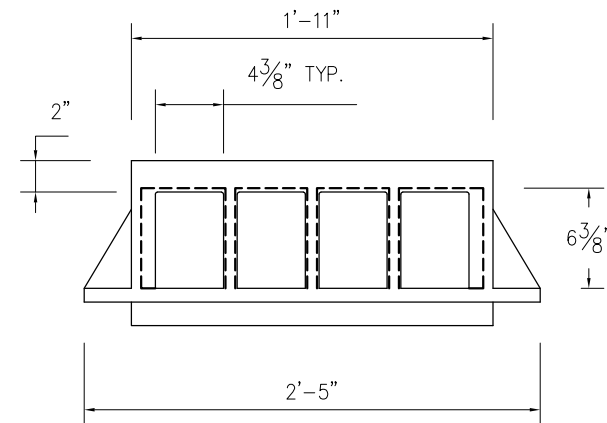
NOT TO SCALE

**Monument
Case and Cover**

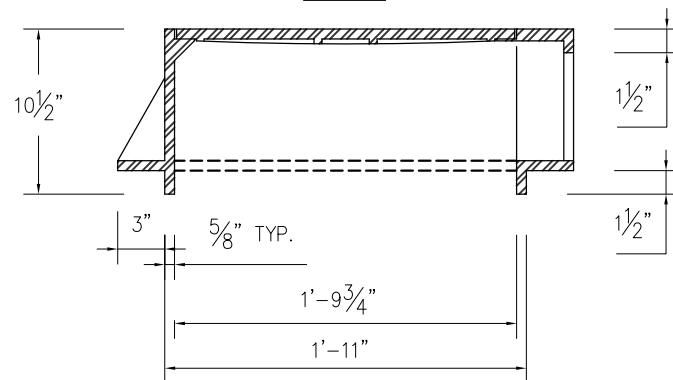
MI-02



PLAN



FRONT ELEVATION



SIDE ELEVATION

APPROVED FOR PUBLICATION

Paul A. Bucich
Paul A. Bucich, P.E.
PUBLIC WORKS DIRECTOR/CITY ENGINEER

01/10/20
DATE



Public Works Department

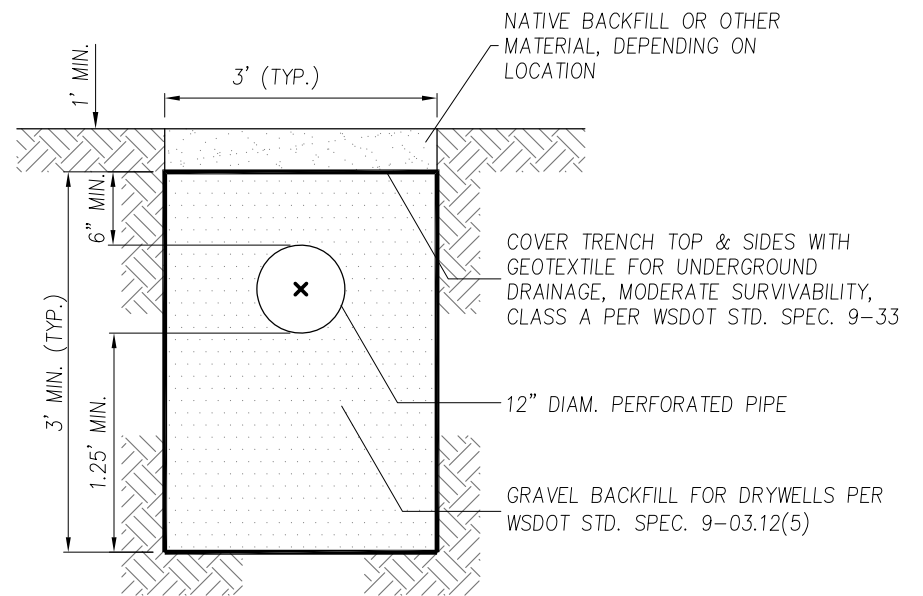
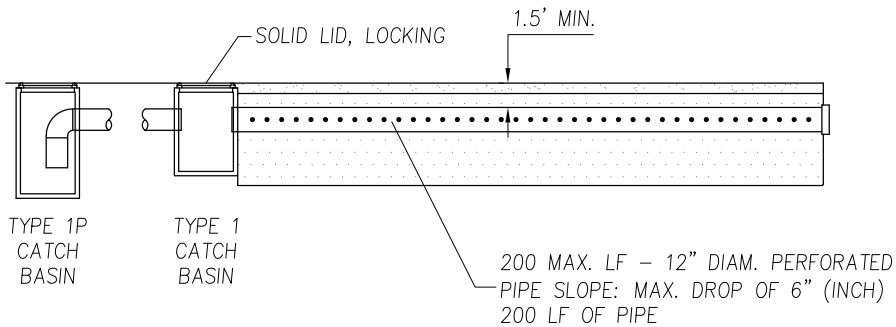
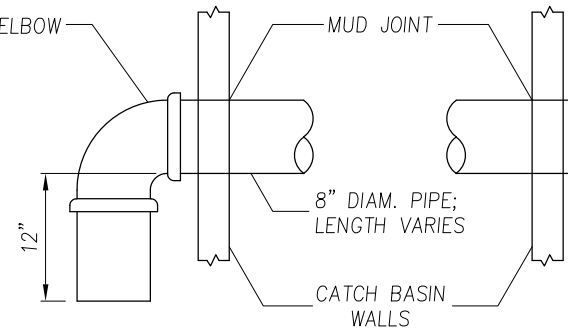
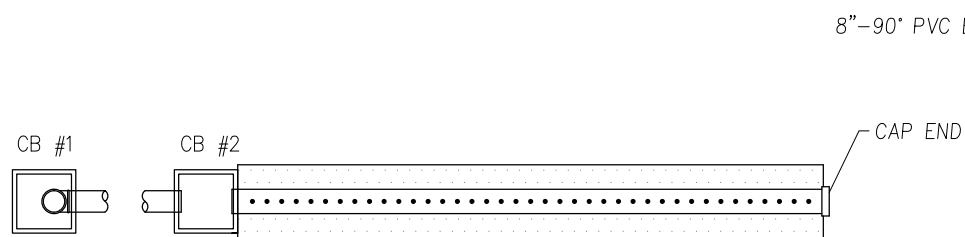
DATE	REVISION DESCRIPTION	BY	APPROVED
12/27/19	ORIGINAL DRAWING	AD/CD	PAB

6000 Main Street SW 98499

NOT TO SCALE

**Curb Inlet
Frame and Cover**

SW-01



NOTE: THE FINISHED RIM ELEVATION OF THE TYPE 1P CATCH BASIN SHALL BE AT LEAST 2" LOWER THAN THE RIM ELEVATION OF THE TYPE 1 CATCH BASIN.

APPROVED FOR PUBLICATION

Paul A. Bucich
Paul A. Bucich, P.E.
PUBLIC WORKS DIRECTOR/CITY ENGINEER

01/10/20
DATE



Public Works Department

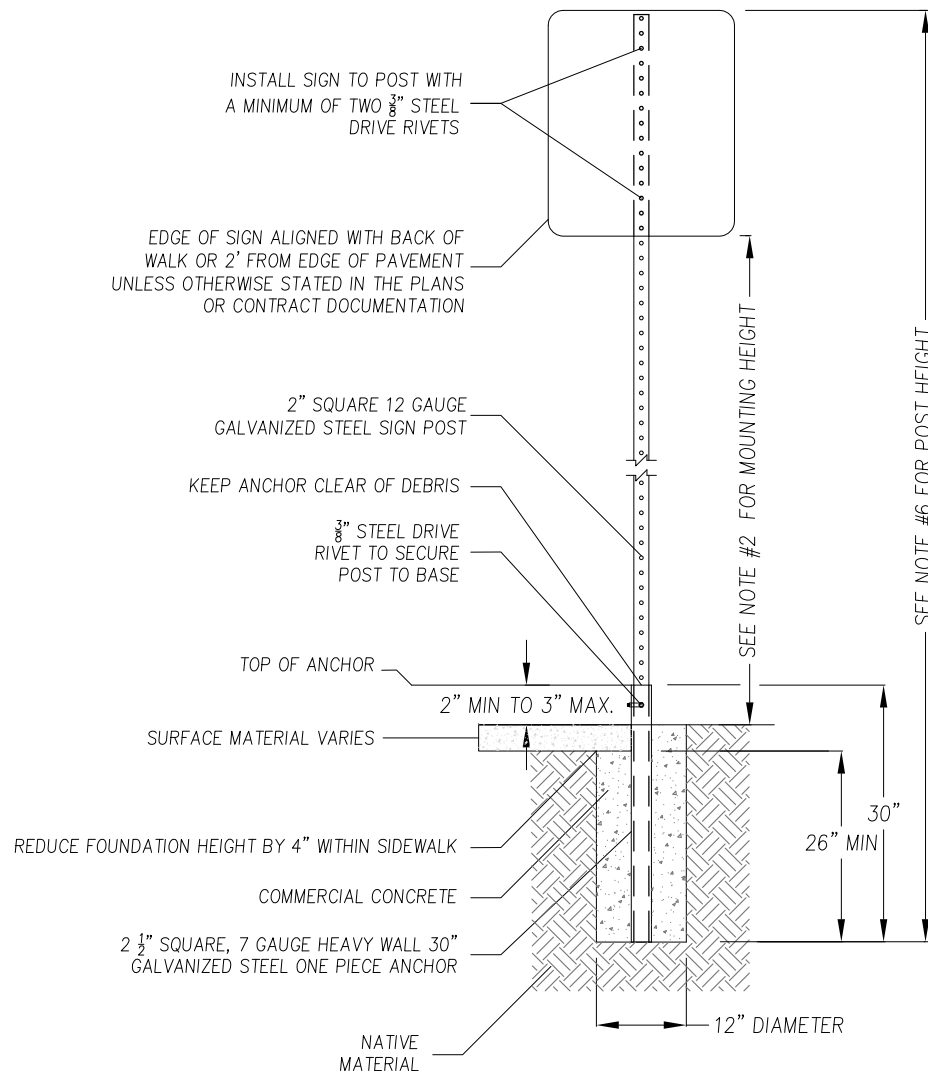
DATE	REVISION DESCRIPTION	BY	APPROVED
12/27/19	ORIGINAL DRAWING	AD/CD	PAB

6000 Main Street SW 98499

NOT TO SCALE

Infiltration Trench Detail

SW-03



GENERAL NOTES:

1. VERIFY AND STAKE LOCATIONS OF TRAFFIC SIGNS FOR ENGINEER APPROVAL AND ADJUSTMENT PRIOR TO INSTALLATION.
2. MOUNTING HEIGHT SHALL BE 7 FEET UNLESS OTHERWISE APPROVED BY THE ENGINEER WITH EXCEPTION TO:
 - A) MOUNTING HEIGHT FOR SECONDARY SIGNS MOUNTED BELOW ANOTHER SIGN MAY BE REDUCED BY 1 FOOT WHEN NOT LOCATED WITHIN SIDEWALK.
 - B) MOUNTING HEIGHT FOR ARROW AND CHEVRON SIGNS SHALL BE 5 FEET WHEN NOT LOCATED WITHIN SIDEWALK.
3. SIGN FACE SHALL BE TYPE 4 SHEETING.
4. ALL HARDWARE AND FASTENERS SHALL BE GALVANIZED STEEL UNLESS OTHERWISE NOTED.
5. TOP OF FOUNDATION SHALL BE FLUSH WITH FINISH GRADE EXCEPT WHEN COVERED BY SIDEWALK.
6. FOR SIGNS OTHER THAN CHEVRON OR ARROW (WI-6, WI-8):
 - A) USE 12' POST FOR SIGNS UP TO 30" TALL;
 - B) USE 14' POST FOR SIGNS 30-54" TALL;
 - C) CONTACT ENGINEER FOR SIGNS TALLER THAN 54"

APPROVED FOR PUBLICATION

Paul A. Bucich
 Paul A. Bucich, P.E.
 PUBLIC WORKS DIRECTOR/CITY ENGINEER

01/07/21
 DATE



Public Works Department

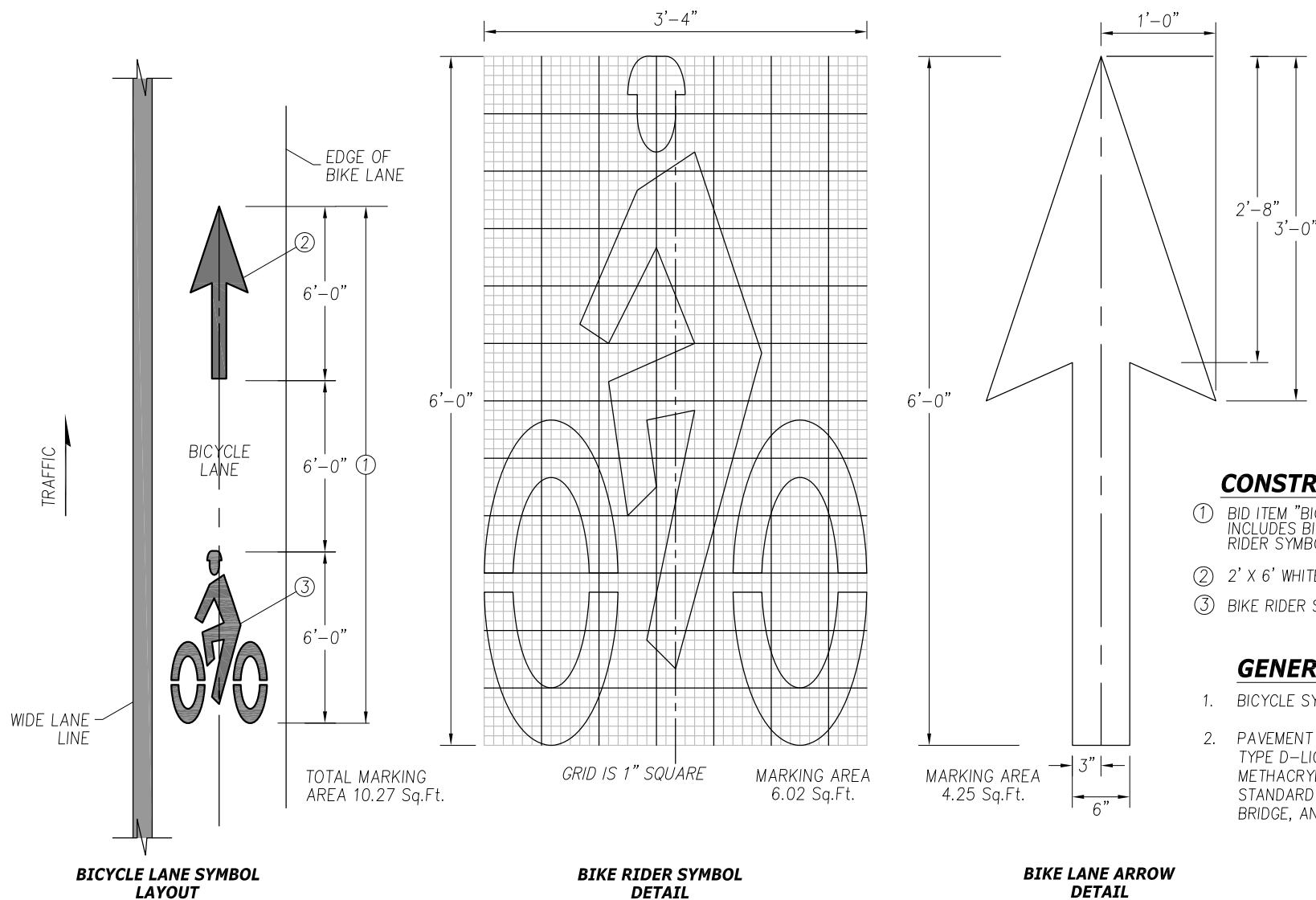
DATE	REVISION DESCRIPTION	BY	APPROVED
1/7/21	ORIGINAL DRAWING	AD/CD	PAB

6000 Main Street SW 98499

NOT TO SCALE

**Steel Post
 Street Sign Support**

PS-03



CONSTRUCTION NOTES:

- ① BID ITEM "BICYCLE LANE SYMBOL" INCLUDES BIKE LANE ARROW AND BIKE RIDER SYMBOL
- ② 2' X 6' WHITE BIKE LANE ARROW
- ③ BIKE RIDER SYMBOL

GENERAL NOTES:

1. BICYCLE SYMBOLS SHALL BE WHITE.
2. PAVEMENT MARKING SHALL BE PLASTIC TYPE D-LIQUID COLD APPLIED METHYL METHACRYLATE (MMA) PER WSDOT STANDARD SPECIFICATIONS FOR ROAD, BRIDGE, AND MUNICIPAL CONSTRUCTION.

APPROVED FOR PUBLICATION

Paul A. Bucich
Paul A. Bucich, P.E.
PUBLIC WORKS DIRECTOR/CITY ENGINEER

01/10/20
DATE



Public Works Department

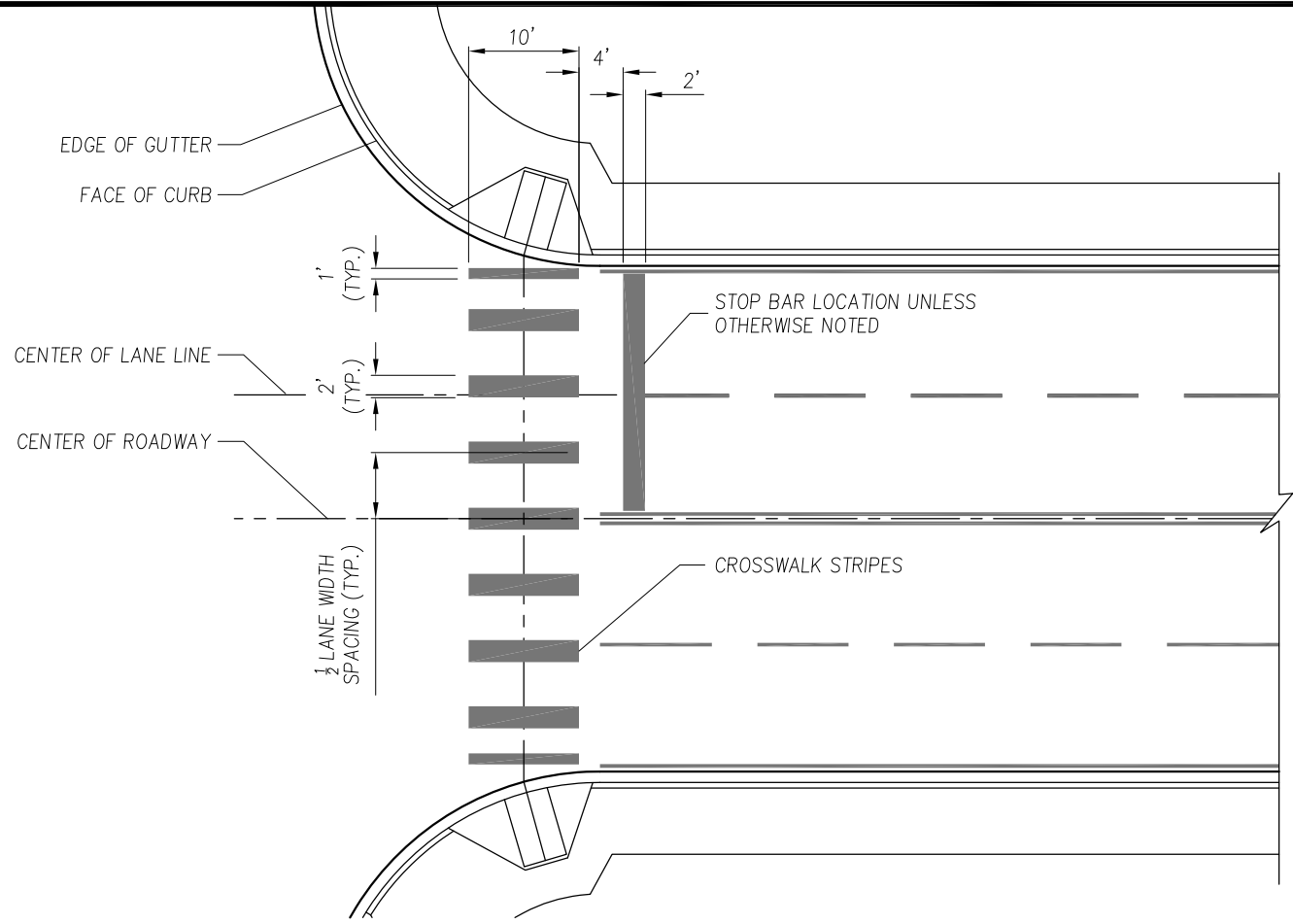
DATE	REVISION DESCRIPTION	BY	APPROVED
12/27/19	ORIGINAL DRAWING	AD/CD	PAB

6000 Main Street SW 98499

NOT TO SCALE


**Bicycle Lane
Symbol Layout**

PS-04




GENERAL NOTES:

1. PAVEMENT MARKING SHALL BE PLASTIC TYPE D-LIQUID COLD APPLIED METHYL METHACRYLATE (MMA) PER WSDOT STANDARD SPECIFICATIONS FOR ROAD, BRIDGE, AND MUNICIPAL CONSTRUCTION.
2. CENTER CROSSWALK ON CURB RAMP ON EACH SIDE OF THE STREET.

<p>APPROVED FOR PUBLICATION</p> <div style="text-align: center;">  </div> <p>Public Works Department</p>	<table border="1" style="width: 100%; border-collapse: collapse;"> <thead> <tr> <th>DATE</th> <th>REVISION DESCRIPTION</th> <th>BY</th> <th>APPROVED</th> </tr> </thead> <tbody> <tr> <td>12/27/19</td> <td>ORIGINAL DRAWING</td> <td>AD/CD</td> <td>PAB</td> </tr> <tr><td> </td><td> </td><td> </td><td> </td></tr> <tr><td> </td><td> </td><td> </td><td> </td></tr> <tr><td> </td><td> </td><td> </td><td> </td></tr> <tr><td> </td><td> </td><td> </td><td> </td></tr> </tbody> </table>	DATE	REVISION DESCRIPTION	BY	APPROVED	12/27/19	ORIGINAL DRAWING	AD/CD	PAB																	<p style="text-align: center; font-size: 1.2em;">Crosswalk and Stop Bar</p>	<div style="border: 1px solid black; padding: 5px; text-align: center;"> PS-05 </div>
DATE	REVISION DESCRIPTION	BY	APPROVED																								
12/27/19	ORIGINAL DRAWING	AD/CD	PAB																								
<div style="display: flex; align-items: center;"> <div style="flex: 1;"> <p><i>Paul A. Bucich</i></p> <p>Paul A. Bucich, P.E. PUBLIC WORKS DIRECTOR/CITY ENGINEER</p> </div> <div style="flex: 0.2; text-align: center;"> <p>01/10/20</p> <p>DATE</p> </div> </div>	<p style="text-align: center;">6000 Main Street SW 98499</p>	<p>NOT TO SCALE</p>																									

60"



8"

4" **YOUR CITY WORKING FOR YOU**

3" PROJECT NAME 1-1/2"

3" TYPE OF IMPROVEMENT 2"

3" FUNDING SOURCE 1-1/2"

3" XXXXXXXXXXXX

3" XXXXXXXXXXXX

1-1/2" \$XXXX.XX

\$XXXX.XX

3" \$XXXXXX.XX

1-1/2"

1-1/2"

2"

3" CONTRACTOR: XXXXXXXXXXXXXXXXXXXX

50"


1/2"


1"

GENERAL NOTES:

1. MATERIALS AND CONSTRUCTION REQUIREMENTS SHALL BE PER LATEST EDITION OF WSDOT STANDARD SPECIFICATIONS FOR ROAD, BRIDGE, AND MUNICIPAL CONSTRUCTION UNLESS OTHERWISE NOTED.
2. ENGINEER WILL PROVIDE FUNDING SOURCE NUMBERS AFTER PROJECT AWARD.
3. SIGN SHALL BE BLUE WRITING ON WHITE BACKGROUND.

APPROVED FOR PUBLICATION

 11/2/09
 Don E. Wickstrom, P.E.
 PUBLIC WORKS DIRECTOR/CITY ENGINEER



Public Works Department

DATE	REVISION DESCRIPTION	BY	APPROVED
11/2/09	ORIGINAL DRAWING	LR/AD	DEW
6000 Main Street SW 98499		NOT TO SCALE	

Project Sign

PS-07

CHANNELIZATION TAPER FORMULA, T_1

$$T_1 = WS \quad (45 \text{ MPH OR MORE}) \quad S = \text{SPEED LIMIT (MPH)}$$

$$T_1 = \frac{WS^2}{60} \quad (0 \text{ TO } 40 \text{ MPH}) \quad W = \text{OFFSET FROM NORMAL CENTER LINE (FT.)}$$

$$T_1 = \text{LENGTH OF TAPER (FT.)}$$

NOTES:

T_1 SHALL BE 50% LARGER WHEN LOCATED IN A CURVE
 T_1 SHALL BE A MINIMUM LENGTH OF 90 FEET

TURN LANE STORAGE LENGTH, P

TO BE DETERMINED BY AN ENGINEERING STUDY

MIN. --- 100 FEET

DESIRABLE ----- 125 FEET TO 150+ FEET

POCKET LENGTHS SHORTER THAN MINIMUM
 BY APPROVAL OF COUNTY ENGINEER

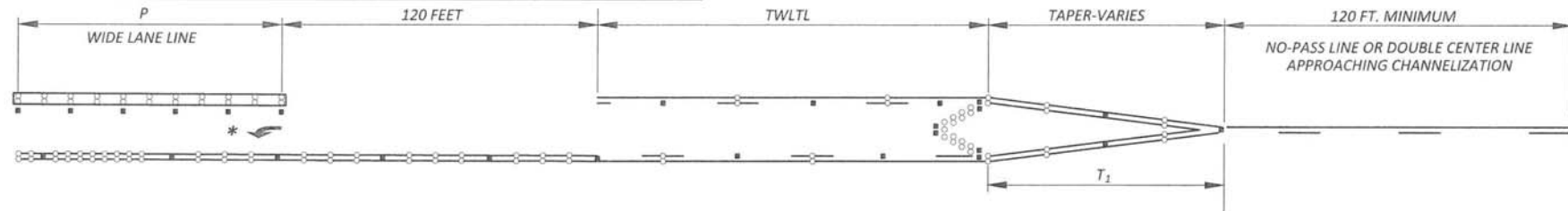
* ARROW SPACING FOR LEFT- / RIGHT-TURN POCKETS

POCKET LENGTH (P)		USE	SPACING AS MEASURED TO TAIL OF ARROW
MORE THAN	UP TO		
130 FEET	255 FEET	1 ARROW**	1ST ARROW AT START OF POCKET
130 FEET	255 FEET	2 ARROWS**	2ND ARROW AT 50 FEET FROM STOP BAR
130 FEET	255 FEET	3 ARROWS**	3RD ARROW CENTERED BETWEEN 1ST & 2ND

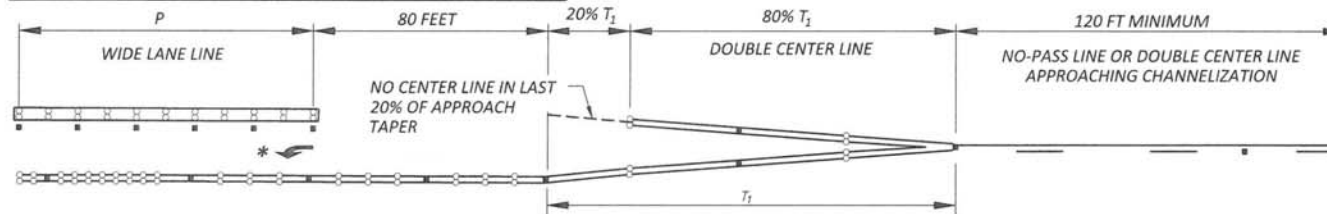
**ONLY(S) REQUIRED FOR DROP LANES (SEE CASE C)

AND FOR "TEE" INTERSECTIONS (SEE CASE E) - SEE SHEET 2 OF 9.

CASE "A" LEFT-TURN POCKET FROM TWO-WAY LEFT-TURN CENTER LINE



CASE "B" LEFT TURN POCKET FROM TAPER SECTION



SEE STANDARD DRAWINGS PC.H2.4, PC.H2.5, AND PC.H2.6 FOR RPM LAYOUT
 SEE STANDARD DRAWING PC.H2.9 FOR NOTES AND STRIPING PATTERNS

(NOT TO SCALE)



Pierce County

Public Works

Office of the County Engineer
 Tacoma Mall Office Building
 4301 South Pine Street, Suite 628
 Tacoma, Washington 98409

An APWA Accredited Agency



BRIAN D. STACY, P.E.
COUNTY ENGINEER

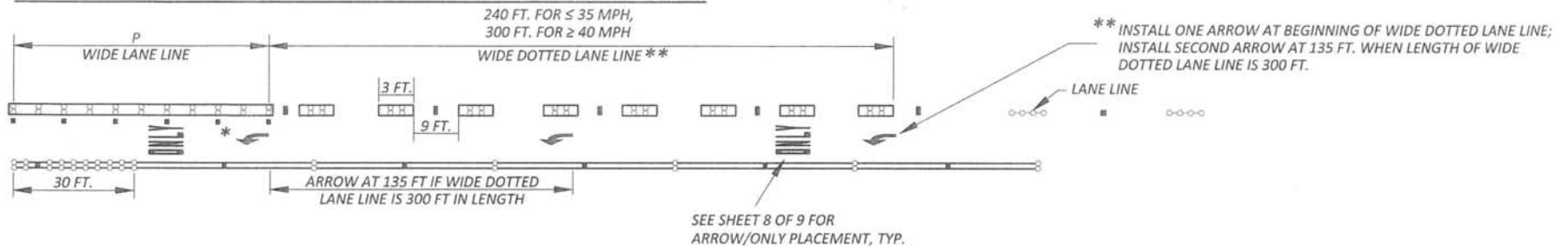
Office of the County Engineer

**PAVEMENT
 MARKINGS**

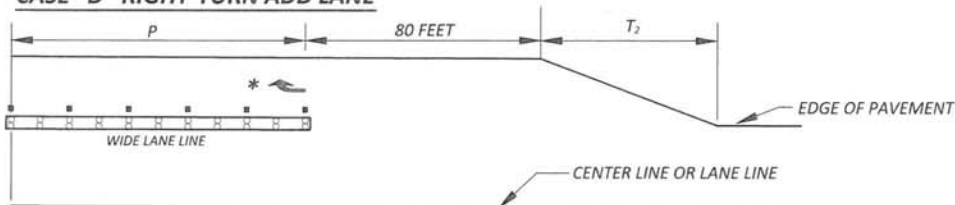
SHEET 1 OF 9

PC.H2.1

CASE "C" LEFT- OR RIGHT-TURN DROP LANE FROM TWO THROUGH LANES



CASE "D" RIGHT-TURN ADD LANE



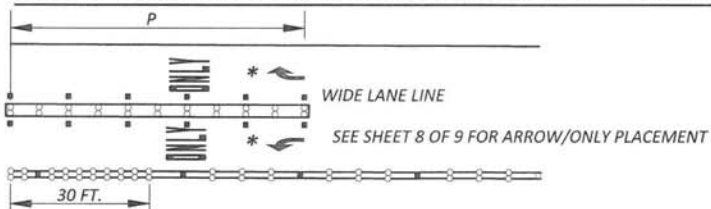
RIGHT TURN LANE TAPER FORMULA, T_2

$$T_2 = 0.15 WS \text{ (40 MPH AND GREATER)}$$

$$T_2 = 60 \text{ FT. (0 TO 35 MPH)}$$

S = SPEED LIMIT (MPH)
 W = ADD LANE WIDTH (FEET)
 T_2 = LENGTH OF TAPER (FEET)

CASE "E" TEE INTERSECTIONS WITH A LEFT- AND RIGHT-TURN LANE



* FOR NUMBER AND SPACING OF ARROW MARKINGS FOR LEFT/RIGHT TURN POCKETS, SEE SHEET 1 OF 9

SEE STANDARD DRAWINGS PC.H2.4, PC.H2.5, AND PC.H2.6 FOR RPM LAYOUT
 SEE STANDARD DRAWING PC.H2.9 FOR NOTES AND STRIPING PATTERNS

(NOT TO SCALE)



Pierce County

Public Works

Office of the County Engineer
 Tacoma Mall Office Building
 4301 South Pine Street, Suite 628
 Tacoma, Washington 98409

An APWA Accredited Agency



BRIAN D. STACY, P.E.
 COUNTY ENGINEER




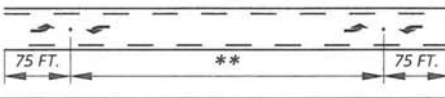
Office of the County Engineer

**PAVEMENT
 MARKINGS**

SHEET 2 OF 9

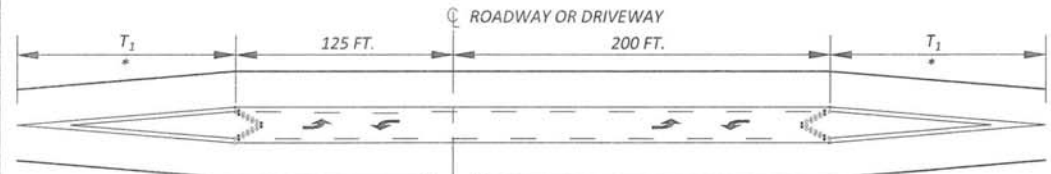
PC.H2.2

TWO-WAY LEFT-TURN LANE ARROW PLACEMENT

SEGMENT LENGTH, D	# OF ARROW SETS	LOCATION OF CENTER OF ARROW SET
0 FT. - 100 FT.	0	NONE
101 FT. - 300 FT.	1	
301 FT. - 500 FT.	2	
501 FT. - 850 FT.	3	
851 FT. - 1200 FT.	4	
1201 FT. - 1550 FT.	5	** SPACE BALANCE OF SETS EVENLY OVER THE REMAINDER OF THE SEGMENT.
OVER 1550 FT.	$\frac{D+200}{350}$	ROUND UP TO THE NEAREST WHOLE NUMBER

SEE STANDARD DRAWINGS PC.H2.4, PC.H2.5, AND PC.H2.6 FOR RPM LAYOUT
SEE STANDARD DRAWING PC.H2.9 FOR NOTES AND STRIPING PATTERNS

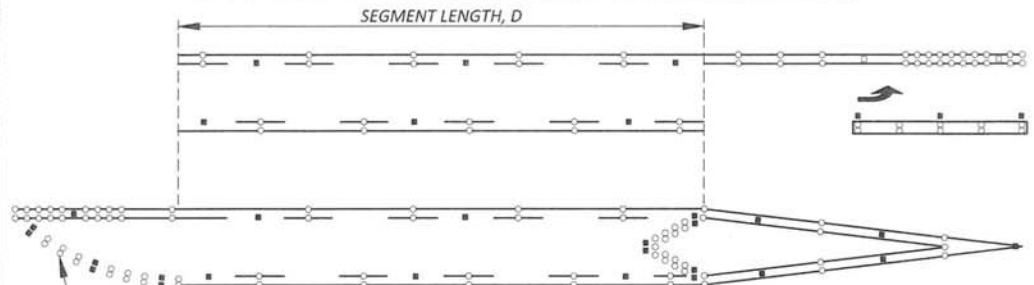
CASE "F" TWO-WAY LEFT-TURN LANE AT DRIVEWAY OR ROADWAY



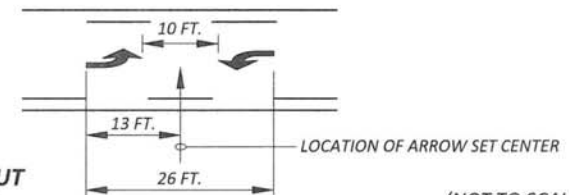
NOTES: -MINIMUM SEGMENT LENGTHS SHOWN
-BREAK STRIPING FOR PUBLIC ROADS

* WHEN CONSTRUCTING NEW TWLTL NEAR EXISTING TWLTL OR LEFT-TURN LANE, WIDEN ROAD AND CONNECT THE TWLTLs WHEN THE DISTANCE FROM THE END OF ONE CENTER LINE TAPER TO THE BEGINNING OF THE NEXT CENTER LINE TAPER IS 125 FEET OR LESS. SEE STANDARD DRAWING PC.H2.1 FOR TAPER LENGTH (T_1) INFORMATION.

MEASUREMENT OF SEGMENT LENGTH AND END TREATMENT EXAMPLES:



SEE BULLET TREATMENT FOR END TAPER (SHEET 6 OF 9)



(NOT TO SCALE)



Pierce County

Public Works

Office of the County Engineer
Tacoma Mall Office Building
4301 South Pine Street, Suite 628
Tacoma, Washington 98409

An APWA Accredited Agency



BRIAN D. STACY, P.E.
COUNTY ENGINEER

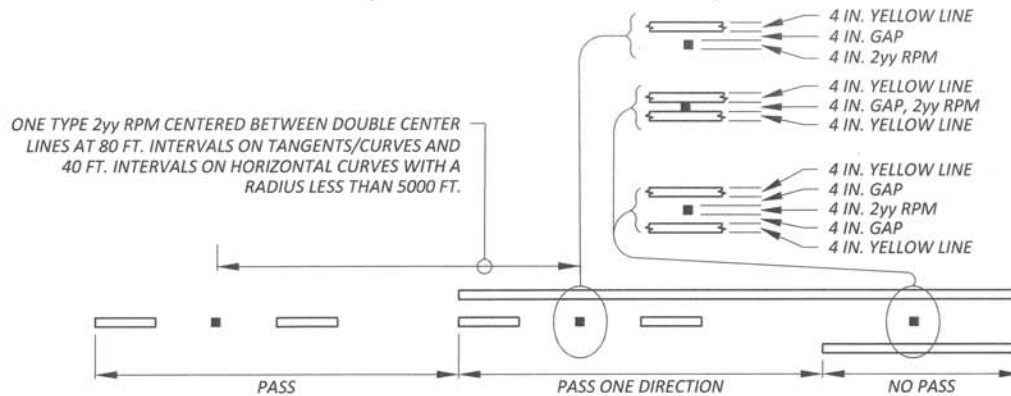
Office of the County Engineer

PAVEMENT
MARKINGS

SHEET 3 OF 9

PC.H2.3

RPM LAYOUT FOR TWO-LANE ROADS (NARROW AND WIDE PATTERN)



RPM LAYOUT FOR MULTI-LANE ROADS (NARROW PATTERN)



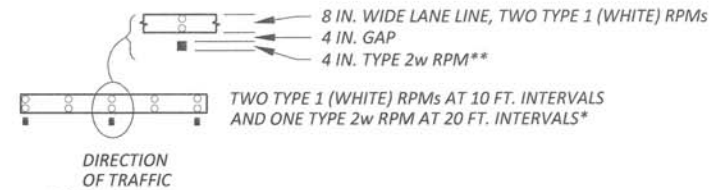
INSTALL TYPE 1 (YELLOW) RPMs, ONE ON EACH LINE WITH A TYPE 2yy RPM CENTERED BETWEEN BOTH LINES AND TYPE 1 SETS. RPMs SHALL BE SPACED AT 80 FT. INTERVALS ON TANGENTS/CURVES AND 40 FT. INTERVALS ON HORIZONTAL CURVES WITH RADII LESS THAN 5000 FT.

* OMIT TYPE 1 RPMs ON TYPE D STRIPING.

** TYPE 2w RPM GOES IN THE TURN LANE. IN THE CASE OF SIDE-BY-SIDE TURN LANES, BOTH LANES SHALL HAVE TYPE 2w RPMs.

SEE STANDARD DRAWING PC.H2.9
FOR NOTES AND STRIPING PATTERNS

RPM LAYOUT FOR WIDE LANE LINE

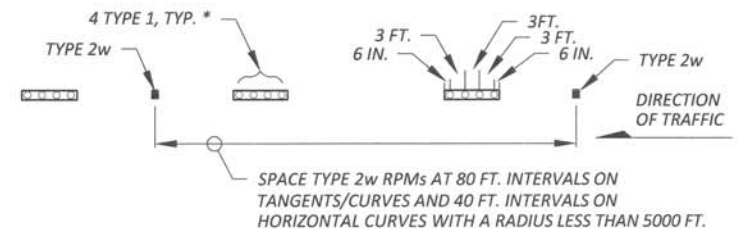


RPM LAYOUT FOR WIDE DOTTED LANE LINE



WIDE DOTTED LANE LINE WITH TWO DOUBLE ROWS OF TYPE 1 (WHITE) RPMs EQUALLY SPACED. CENTERED BETWEEN EVERY SECOND WIDE DOTTED LANE LINE INSTALL DOUBLE ROW OF TYPE 2w RPMs.*

RPM LAYOUT FOR PAINTED LANE LINES



(NOT TO SCALE)



Pierce County

Public Works

Office of the County Engineer
Tacoma Mall Office Building
4301 South Pine Street, Suite 628
Tacoma, Washington 98409-7207

An APWA Accredited Agency



BRIAN D. STACY, P.E.
COUNTY ENGINEER

Office of the County Engineer

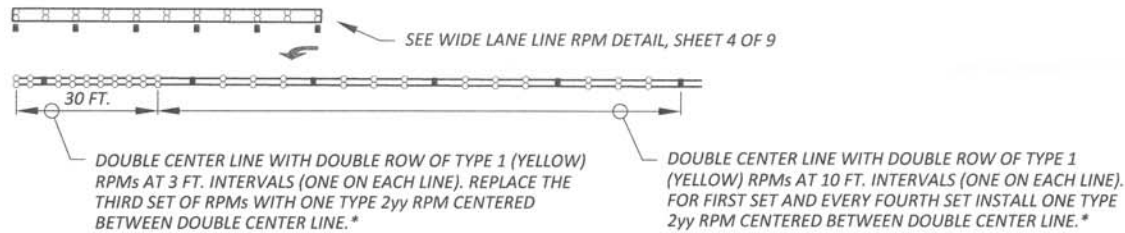
**PAVEMENT
MARKINGS**

SHEET 4 OF 9

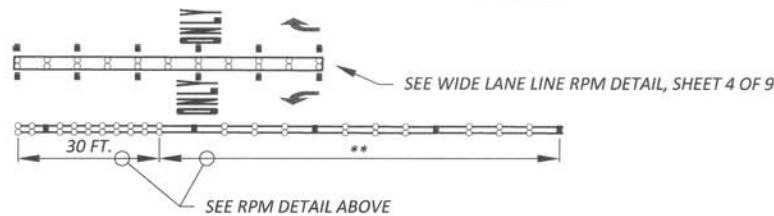
PC.H2.4

RPM LAYOUT FOR TURN LANES

LEFT-TURN LANE FROM TAPER OR TWO-WAY LEFT-TURN LANE



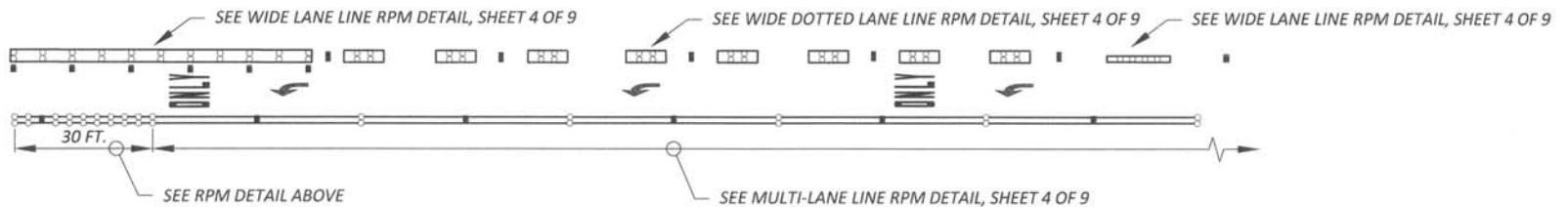
TEE INTERSECTIONS WITH A LEFT- AND RIGHT-TURN LANE



* OMIT TYPE 1 RPMs ON TYPE D STRIPING.

** THIS RPM PATTERN APPLIES 30 FT. FROM THE STOP LINE TO CENTER LINE TAPER AND 90 FT. IF NO CENTER LINE TAPER.

DROP LANE FROM TWO THROUGH LANES



SEE STANDARD DRAWING PC.H2.9 FOR NOTES AND STRIPING PATTERNS

(NOT TO SCALE)



Pierce County

Public Works

Office of the County Engineer
Tacoma Mall Office Building
4301 South Pine Street, Suite 628
Tacoma, Washington 98409-7207

An APWA Accredited Agency



BRIAN D. STACY, P.E.
COUNTY ENGINEER

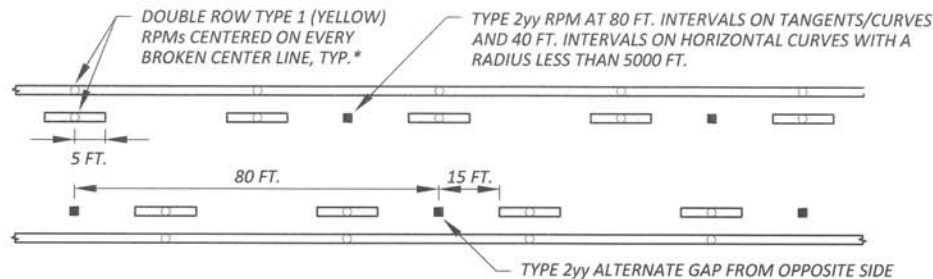
Office of the County Engineer

**PAVEMENT
MARKINGS**

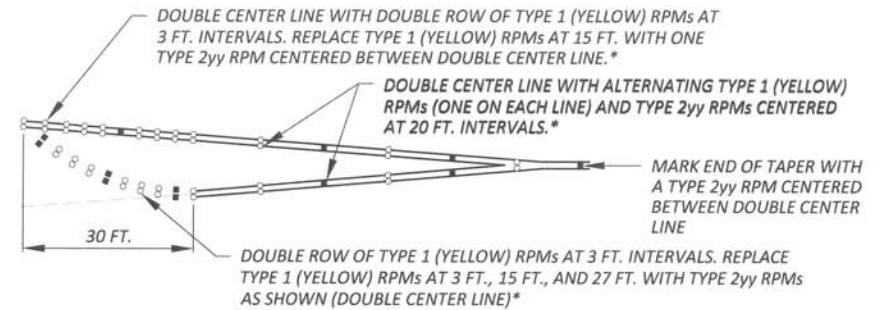
SHEET 5 OF 9

PC.H2.5

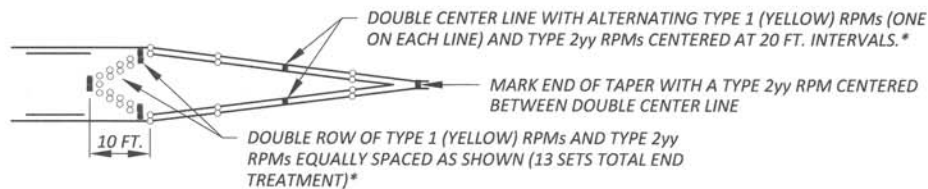
RPM LAYOUT FOR TWO-WAY LEFT-TURN LANE



BULLET TREATMENT FOR END OF TAPER



RPM LAYOUT FOR END OF TAPER/ BEGINNING OF TWO-WAY LEFT-TURN LANE



RAISED PAVEMENT MARKERS (RPMs)

TYPE 1	NON-REFLECTIVE	YELLOW OR WHITE
TYPE 2yy	REFLECTIVE FACE BOTH SIDES	YELLOW AND YELLOW
TYPE 2w	REFLECTIVE FACE ONE SIDE, APPROACH DIRECTION	WHITE

* OMIT TYPE 1 RPMs ON TYPE D STRIPING.

SEE STANDARD DRAWING PC.H2.9 FOR NOTES AND STRIPING PATTERNS

(NOT TO SCALE)



Pierce County

Public Works

Office of the County Engineer
Tacoma Mall Office Building
4301 South Pine Street, Suite 628
Tacoma, Washington 98409-7207

An APWA Accredited Agency



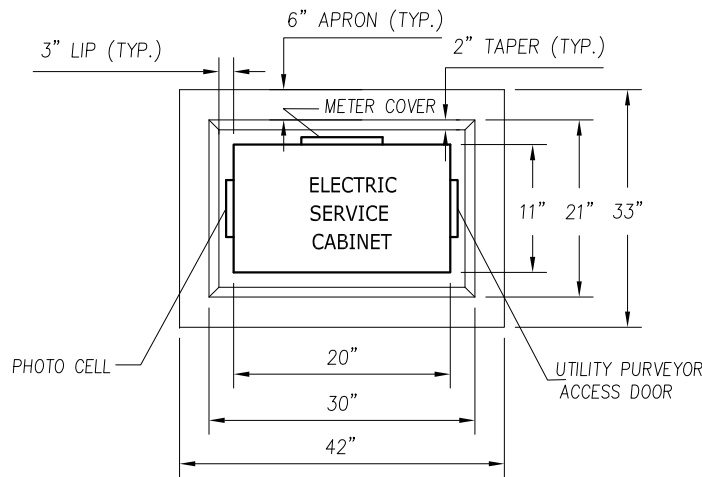
BRIAN D. STACY, P.E.
COUNTY ENGINEER

Office of the County Engineer

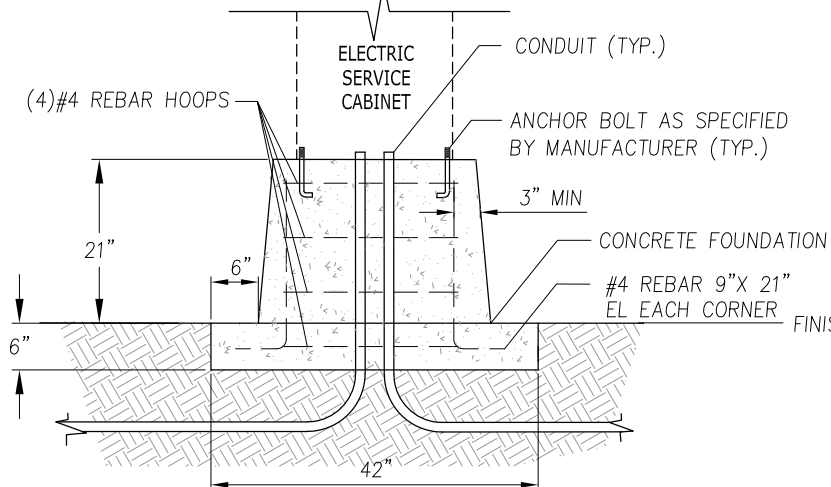
PAVEMENT MARKINGS

SHEET 6 OF 9

PC.H2.6



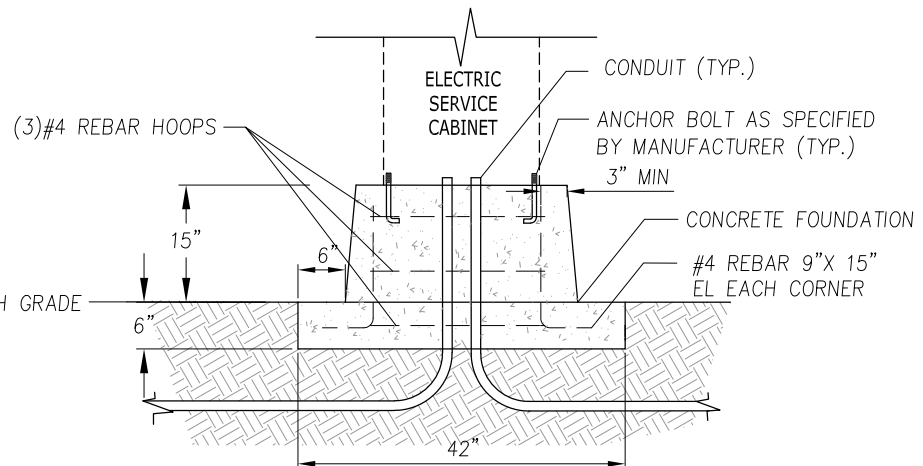
PLAN



**ELECTRICAL SERVICE CABINET UP TO 57" TALL
ELEVATION**

GENERAL NOTES:

1. MATERIALS AND CONSTRUCTION REQUIREMENTS SHALL BE PER LATEST EDITION OF WSDOT STANDARD SPECIFICATIONS FOR ROAD, BRIDGE, AND MUNICIPAL CONSTRUCTION.
2. CONTRACTOR TO VERIFY FOUNDATION SIZE, ANCHOR BOLT LOCATION, AND CONDUIT LOCATION BASED ON APPROVED EQUIPMENT SHOP DRAWINGS PRIOR TO CONSTRUCTION.
3. PHOTO CELL GENERATOR SWITCH AND UTILITY PURVEYOR ACCESS DOOR SHALL BE 24" CLEAR OF OTHER OBJECTS.
4. $\frac{3}{8}$ IN. ϕ PLASTIC DRAIN TUBE SHALL BE PROVIDED FROM BASE OF CABINET TO TOP OF CONCRETE PAD AT HOUSE SIDE OF CONCRETE PEDESTAL.
5. SERVICE CABINET GROUNDING CONDUIT NOT SHOWN. CONDUIT SHALL BE RCM. SEE WSDOT STANDARD PLAN J-60.05-01 FOR TYPICAL GROUNDING DETAILS. NO GROUND RODS SHALL BE INSTALLED IN PEDESTAL.
6. CONCRETE PAD SHALL HAVE A BRUSHED FINISH. THE CONCRETE PEDESTAL TOP SHALL HAVE SMOOTH, TROWEL FINISH, WITH 0.5 IN. ROUND FILLET ON OUTSIDE TOP EDGE.
7. SEAL CONCRETE PEDESTAL TOP WITH SILVER PAINT. APPLY ADEQUATE OUTDOOR SEALANT JUST PRIOR TO PLACING CABINET. SEAL CABINET TO CONCRETE PEDESTAL. APPLY DRESS BEADING AROUND CABINET TO COMPLETE SEAL. REFER TO SPECIAL PROVISIONS FOR ADDITIONAL INFORMATION.
8. SERVICE CONDUIT INTO THE SERVICE CABINET SHOULD FOLLOW LOCAL POWER UTILITY SPECIFICATION; PLACEMENT TO MATCH SERVICE CABINET CONSTRUCTION. UTILITY MAY REQUIRE A DATA CONDUIT.



**ELECTRICAL SERVICE CABINET OVER 57" TALL
ELEVATION**

APPROVED FOR PUBLICATION

Paul A. Bucich
Paul A. Bucich, P.E.
PUBLIC WORKS DIRECTOR/CITY ENGINEER

01/10/20
DATE



Public Works Department

DATE	REVISION DESCRIPTION	BY	APPROVED
11/05/19	ORIGINAL DRAWING	AD/CD	PAB

6000 Main Street SW 98499

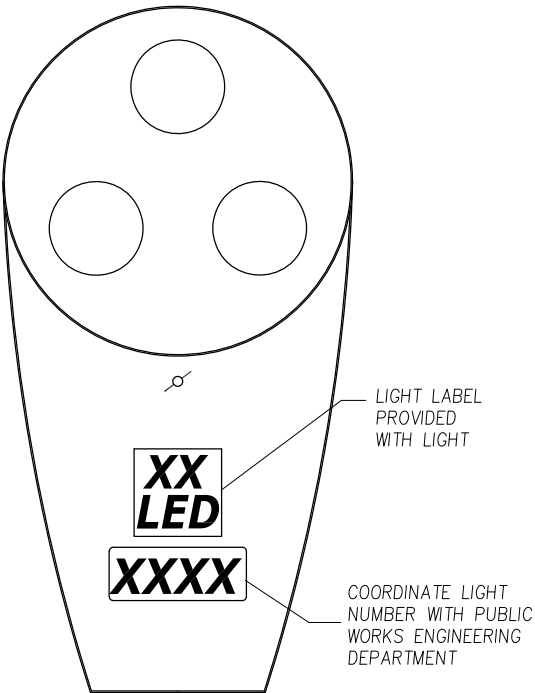
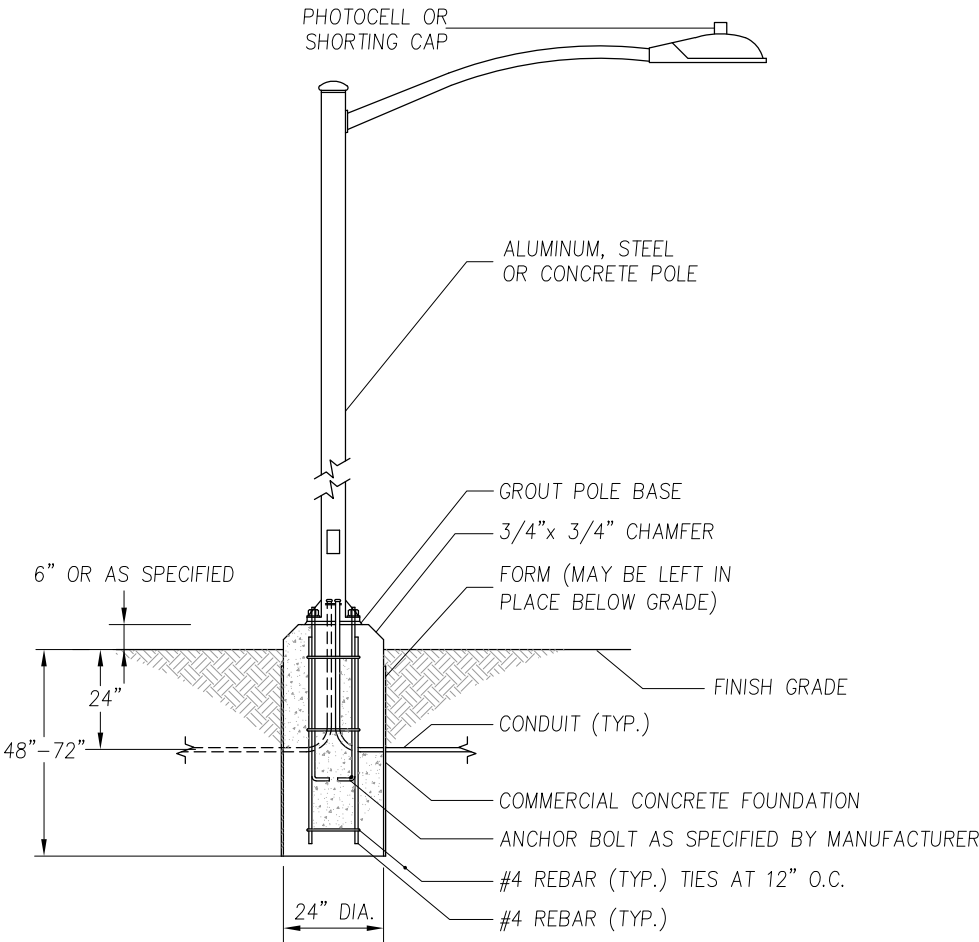
NOT TO SCALE

**Service Cabinet
Pedestal**

IS-04

GENERAL NOTES:

1. MATERIALS AND CONSTRUCTION REQUIREMENTS SHALL BE PER CITY OF LAKEWOOD ENGINEERING STANDARDS MANUAL SECTION 9.1.
2. FOUNDATION DEPTH SHALL BE 48" FOR ALUMINUM AND STEEL POLES AND 72" FOR CONCRETE POLES.
3. IF A STREET LIGHT IS PLACED IN A SIDEWALK, THE TOP OF THE FOUNDATION SHALL BE FLUSH WITH THE TOP OF SIDEWALK, AND THE FOUNDATION SHALL NOT INCLUDE A CHAMFER.



STREET LIGHT LABELING

APPROVED FOR PUBLICATION

Paul A. Bucich
Paul A. Bucich, P.E.
PUBLIC WORKS DIRECTOR/CITY ENGINEER

01/10/20
DATE

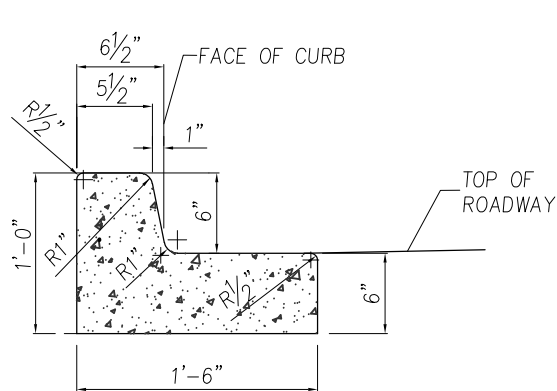


Public Works Department

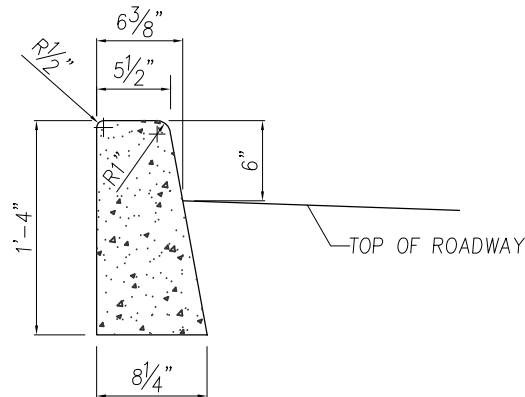
DATE	REVISION DESCRIPTION	BY	APPROVED
11/05/19	ORIGINAL DRAWING	AD/CD	PAB
6000 Main Street SW 98499		NOT TO SCALE	

Street Lights

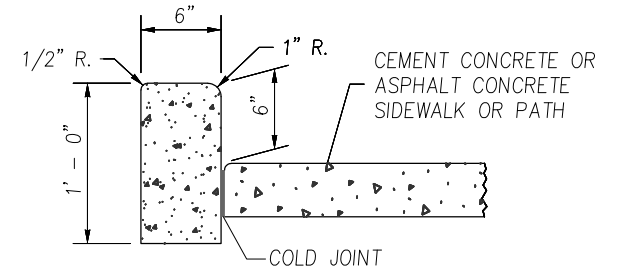
IS-06



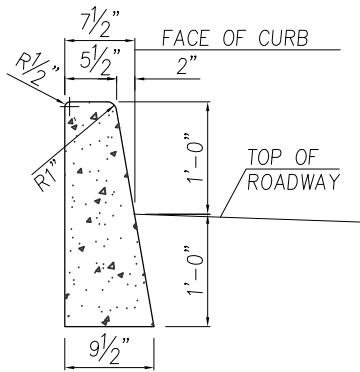
TRAFFIC CURB AND GUTTER



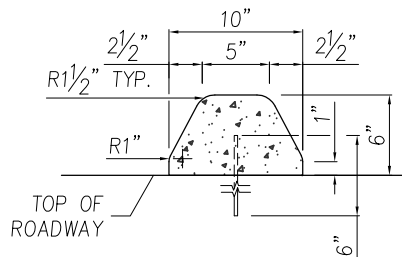
TRAFFIC BARRIER CURB



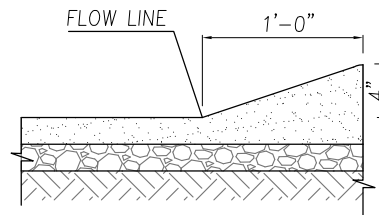
PEDESTRIAN CURB



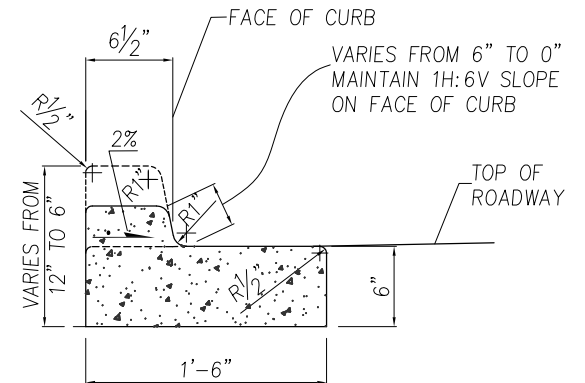
TRUCK BARRIER CURB



EXTRUDED CURB



HMA WEDGE CURB



DEPRESSED CURB AND GUTTER
(AT CURB RAMPS AND DRIVEWAY ENTRANCES)

GENERAL NOTES:

1. MATERIALS AND CONSTRUCTION REQUIREMENTS SHALL BE PER LATEST EDITION OF WSDOT STANDARD SPECIFICATIONS FOR ROAD, BRIDGE, AND MUNICIPAL CONSTRUCTION.

APPROVED FOR PUBLICATION

Paul A. Bucich
Paul A. Bucich, P.E.
PUBLIC WORKS DIRECTOR/CITY ENGINEER

01/10/20
DATE



Public Works Department

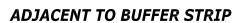
DATE	REVISION DESCRIPTION	BY	APPROVED
11/2/09	ORIGINAL DRAWING	AD	DEW
2/28/12	REVISED DRAWING	TB/LC	DEW
3/2/15	REMOVED TYPE "C" CURB	LC	DEW
9/7/17	REVISED DRAWING	TJM	DEW
1/16/19	REVISED DRAWING	CD	PAB

6000 Main Street SW 98499

NOT TO SCALE

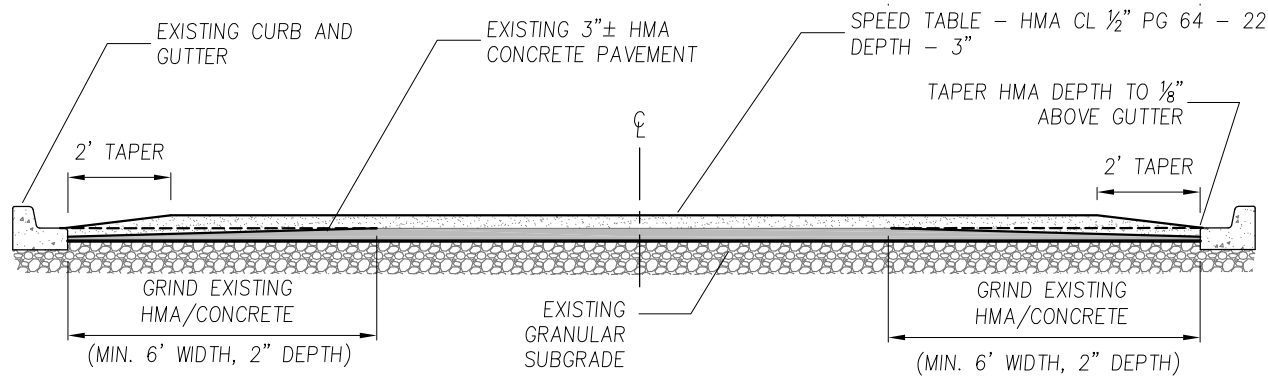
Curbs

FR-04

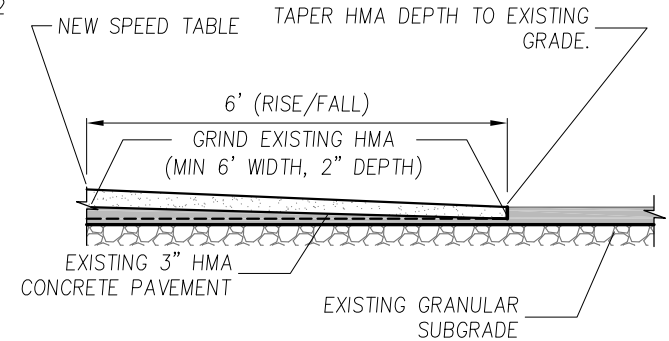


1. MATERIALS AND CONSTRUCTION REQUIREMENTS SHALL BE PER LATEST EDITION OF WSDOT STANDARD SPECIFICATIONS FOR ROAD, BRIDGE, AND MUNICIPAL CONSTRUCTION.
2. FOUR FEET OF SIDEWALK WIDTH SHALL BE THE MINIMUM PEDESTRIAN ACCESSIBLE ROUTE FREE OF VERTICAL AND HORIZONTAL OBSTRUCTIONS.
3. GRATINGS, ACCESS COVERS, JUNCTION BOXES, CABLE VAULTS, PULL BOXES AND OTHER APPURTENANCES WITHIN THE SIDEWALK MUST HAVE SLIP RESISTANT SURFACES, BE FLUSH WITH SURFACE, AND MATCH GRADE OF THE SIDEWALK.
4. A REVERSE SLOPE ON SIDEWALK MAY BE ALLOWED WITH CITY ENGINEER APPROVAL TO ACCOMMODATE THE INSTALLATION OF LOW IMPACT DEVELOPMENT BMP'S.
5. A REDUCED WIDTH OF SIDEWALK MAY BE ALLOWED WITH CITY ENGINEER APPROVAL TO ACCOMMODATE THE INSTALLATION OF LOW IMPACT DEVELOPMENT BMP'S.
6. SIDEWALK SHALL BE PLACED OVER 2" (INCH) CSTC.

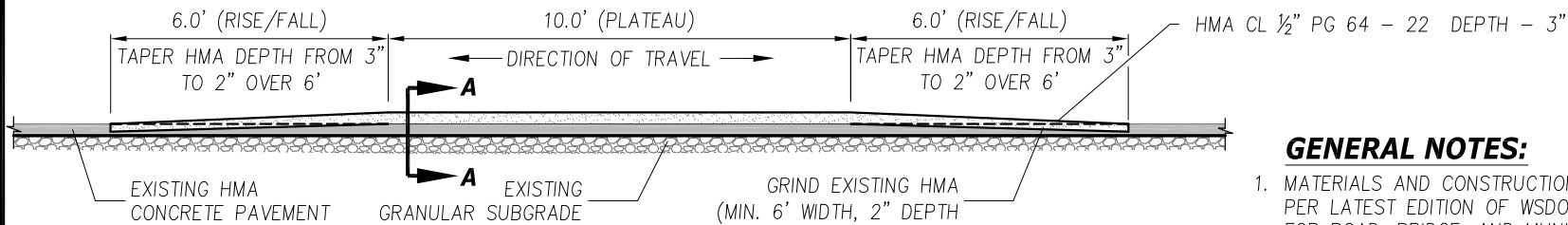
FR-03



SPEED TABLE SECTION A-A



SPEED TABLE SECTION B-B



SPEED TABLE CENTER PROFILE

GENERAL NOTES:

1. MATERIALS AND CONSTRUCTION REQUIREMENTS SHALL BE PER LATEST EDITION OF WSDOT STANDARD SPECIFICATIONS FOR ROAD, BRIDGE, AND MUNICIPAL CONSTRUCTION UNLESS OTHERWISE NOTED.
2. EXACT LOCATION OF SPEED TABLES TO BE DETERMINED IN THE FIELD BY THE PROJECT ENGINEER.
3. IF CURB AND GUTTER DOES NOT EXIST, TAPER SPEED TABLE TO TWO INCHES ABOVE EXISTING SHOULDER GRADE.

APPROVED FOR PUBLICATION

Paul A. Bucich
Paul A. Bucich, P.E.
 PUBLIC WORKS DIRECTOR/CITY ENGINEER

01/10/20
 DATE



Public Works Department

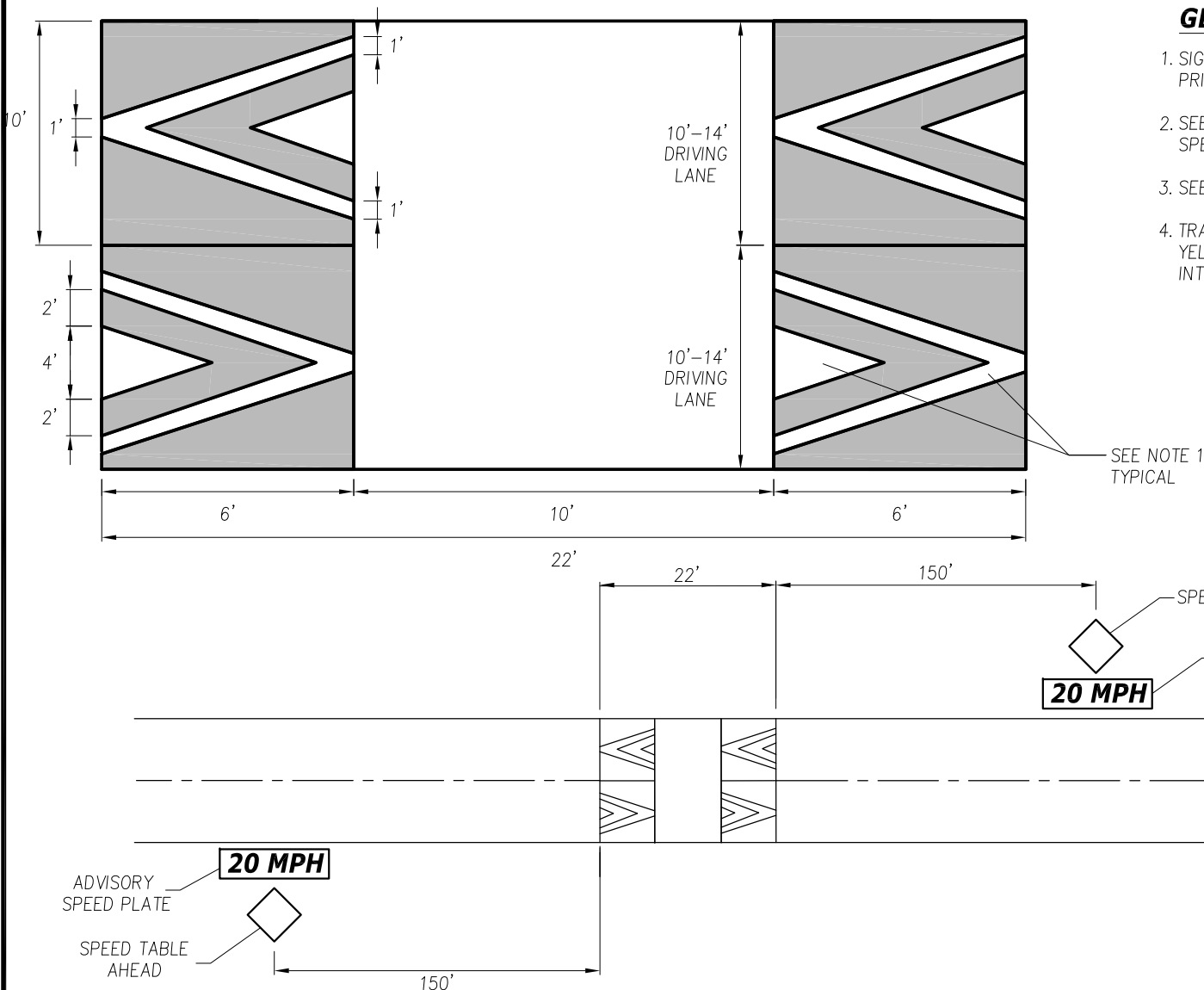
DATE	REVISION DESCRIPTION	BY	APPROVED
12/27/19	ORIGINAL DRAWING	AD/CD	PAB

6000 Main Street SW 98499

NOT TO SCALE

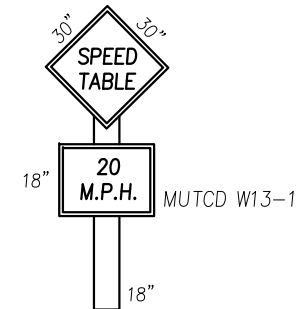
**Speed Table
 Details**

RW-08



GENERAL NOTES:

1. SIGNS AND MARKINGS SHALL BE VERIFIED BY THE ENGINEER PRIOR TO INSTALLATION.
2. SEE LAKEWOOD STANDARD PLAN RW-07 AND RW-08 FOR SPEED TABLE CONSTRUCTION DETAILS.
3. SEE MUTCD FIGURE 3B-30 FOR PAVEMENT MARKING DETAILS.
4. TRAFFIC SIGNS SHALL HAVE BLACK BORDER AND TEXT ON YELLOW BACKGROUND. SIGNS SHALL HAVE TYPE FOUR HIGH INTENSITY SHEETINGS.



APPROVED FOR PUBLICATION

Paul A. Bucich
 Paul A. Bucich, P.E.
 PUBLIC WORKS DIRECTOR/CITY ENGINEER

01/10/20
 DATE



Public Works Department

DATE	REVISION DESCRIPTION	BY	APPROVED
11/05/19	ORIGINAL DRAWING	AD/CD	PAB

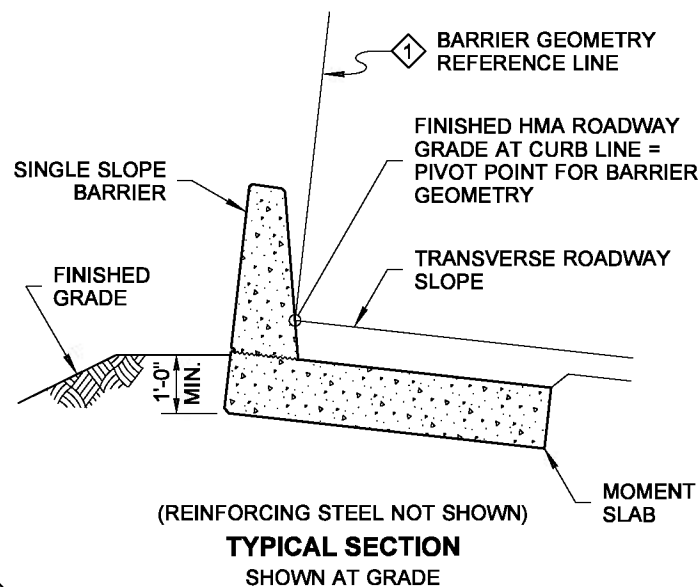
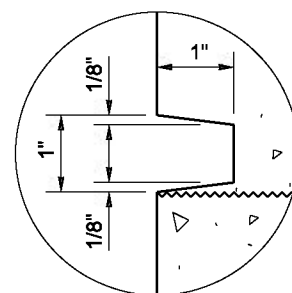
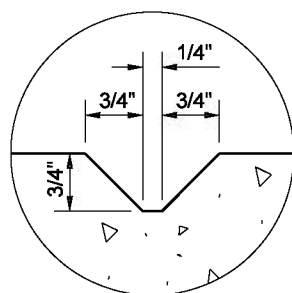
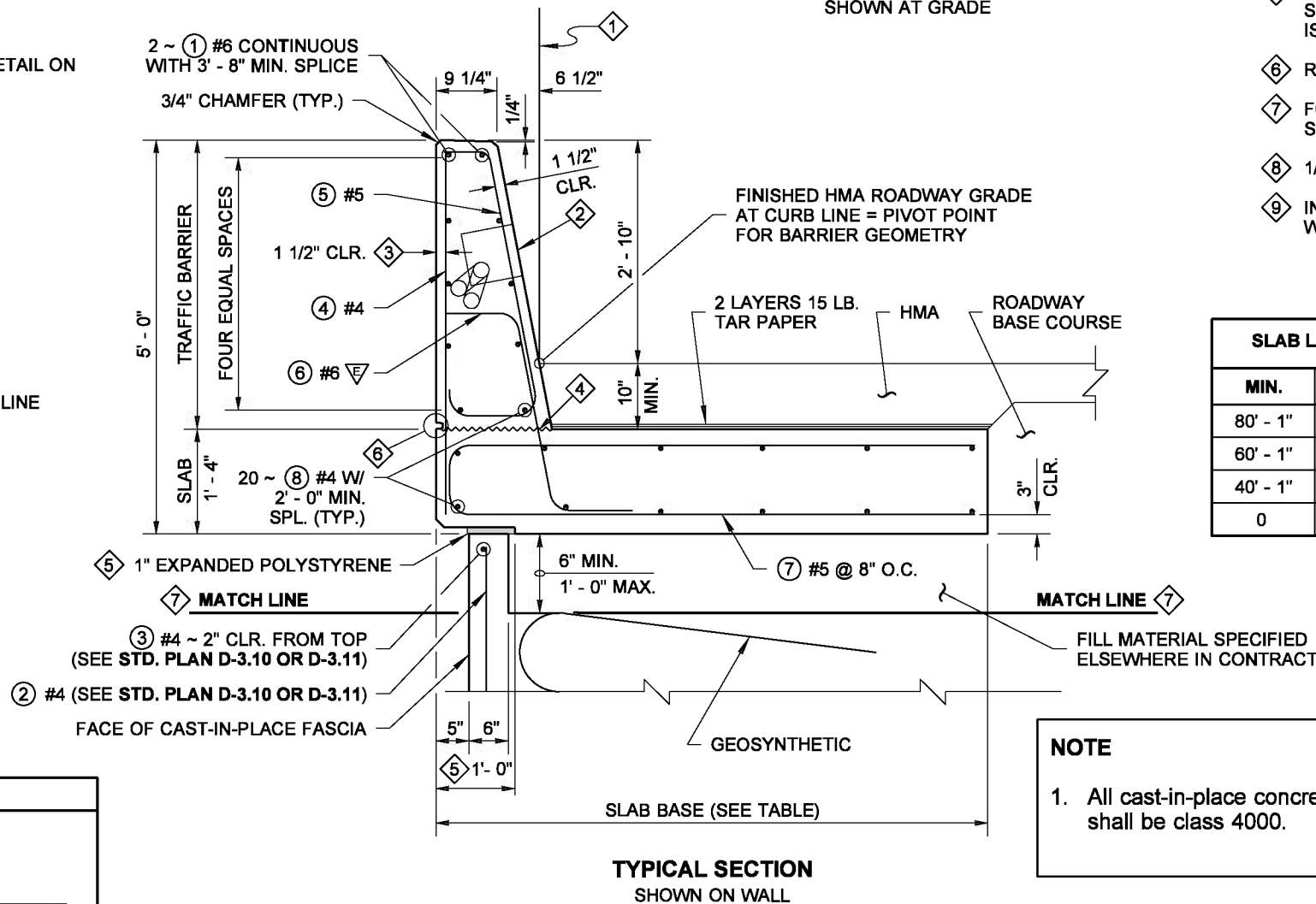
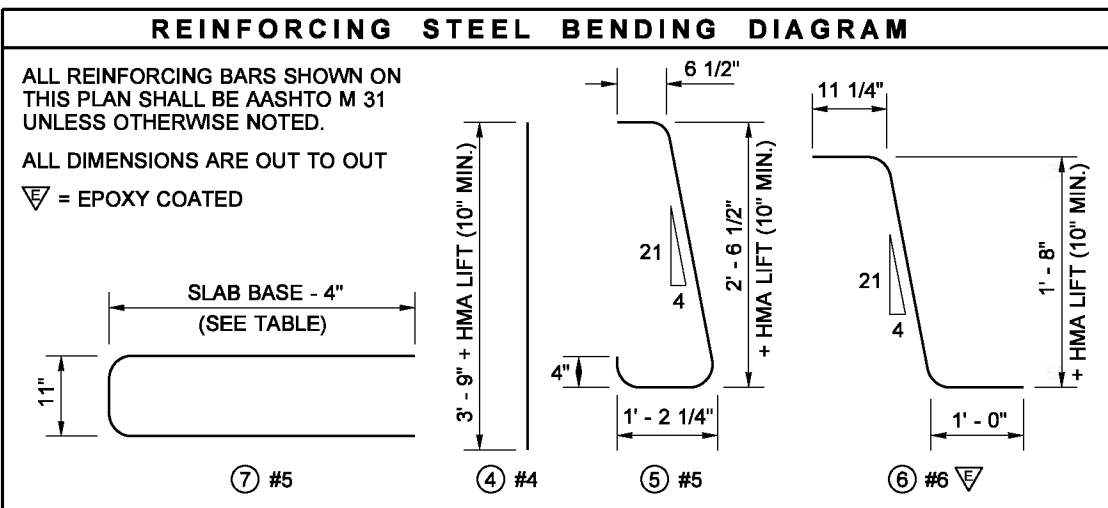
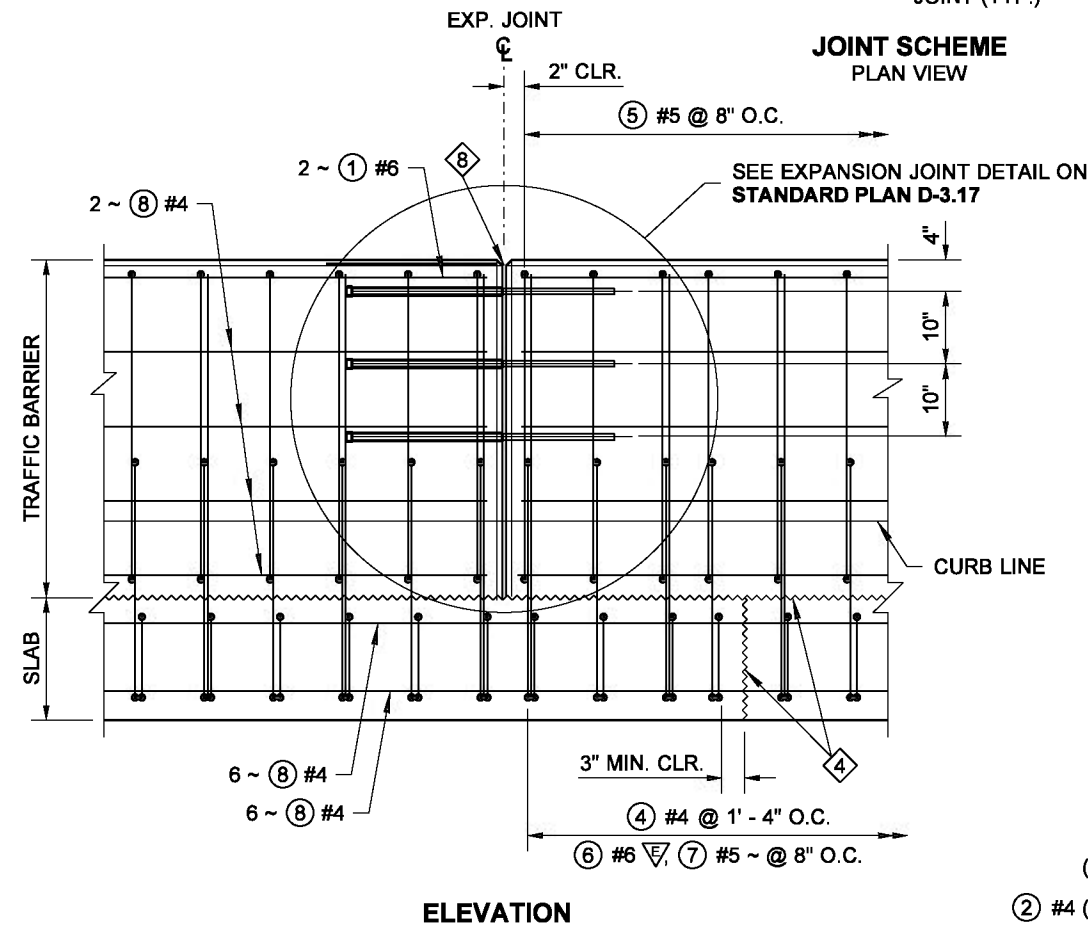
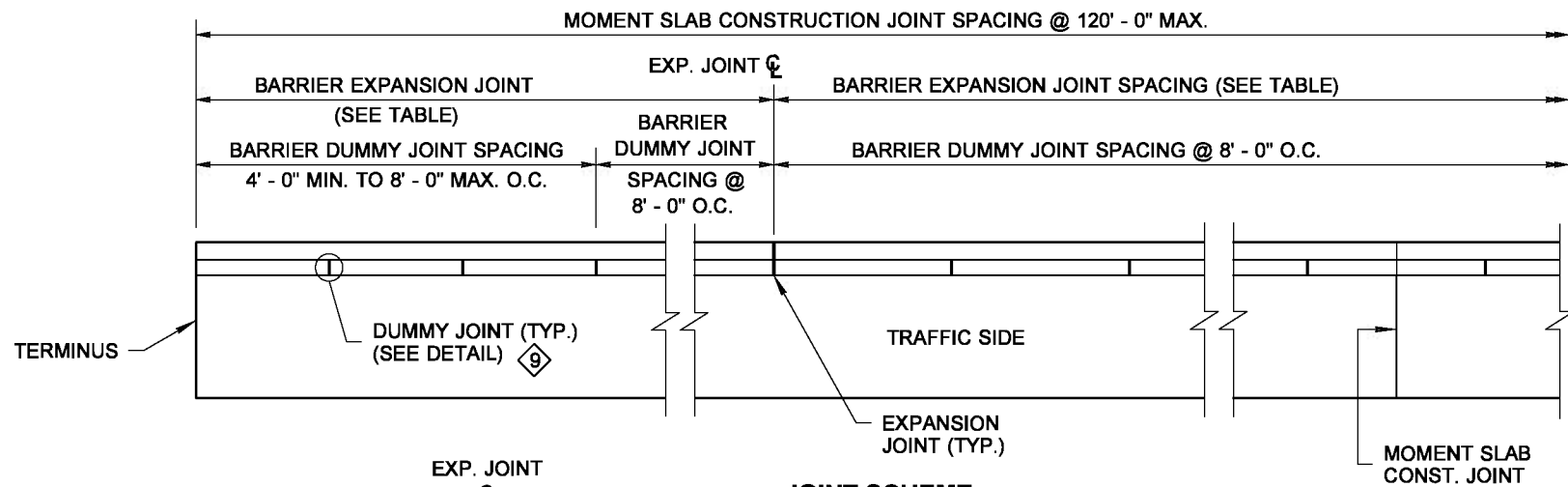
6000 Main Street SW 98499

NOT TO SCALE

**Speed Table
 Pavement Markings
 and Signage**

RW-09

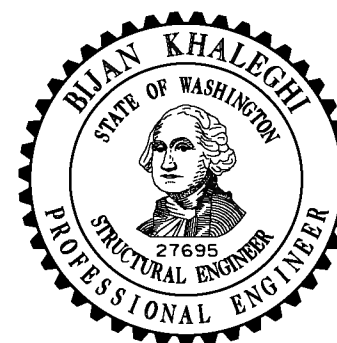
DRAWN BY: BILL BERENS



KEY NOTES

- 1 THE BARRIER GEOMETRY REFERENCE LINE (B.G.R.L.) IS PERPENDICULAR TO THE TRANSVERSE ROADWAY SLOPE (T.R.S.). FOR SUPERELEVATED TRANSVERSE ROADWAY SLOPES, THE B.G.R.L. ON THE LOW SIDE OF THE ROADWAY SHALL BE PERPENDICULAR TO THE T.R.S. UP TO A MAXIMUM OF 8% SUPERELEVATION; THE B.G.R.L. ON THE HIGH SIDE SHALL ALWAYS BE PERPENDICULAR TO THE T.R.S..
- 2 JUNCTION BOX (MOUNT BOX SO COVER IS FLUSH WITH THE BARRIER FACE WITH A 0" TOLERANCE PROTRUDING BEYOND THE BARRIER FACE AND 1/8" RECESSED). USE NEMA 4X JUNCTION BOX WITH STATIONARY-FORMS ~ SEE **STANDARD PLAN J-40.36**. USE NEMA 3R JUNCTION BOX WITH SLIP-FORMS ~ SEE **STANDARD PLAN J-40.37**.
- 3 1 1/2" MIN. CONCRETE COVER ~ INCREASE THE COVER AS REQUIRED TO ACCOMMODATE ARCHITECTURAL FEATURES AND FINISH.
- 4 CONSTRUCTION JOINT WITH ROUGHENED SURFACE.
- 5 THE NOTCH, DETAILED BY THESE DIMENSIONS AND SPECIFICATIONS, IS REQUIRED ONLY IF THE BARRIER IS ON WALL FACING.
- 6 RUSTICATION ~ SEE RUSTICATION DETAIL
- 7 FOR STRUCTURAL DETAILS BELOW THE MATCH LINE, SEE **STANDARD PLANS D-3.09, D-3.10 OR D-3.11**.
- 8 1/2" EXPANSION JOINT WITH PREMOLDED JOINT FILLER.
- 9 INSTALL BARRIER DUMMY JOINTS ON TRAFFIC SIDE ONLY WHEN ARCHITECTURAL FEATURES ARE SPECIFIED.

SLAB LENGTH		SLAB BASE		BARRIER EXPANSION JOINT SPACING	
MIN.	MAX.	ON WALL	AT GRADE	MIN.	MAX.
80' - 1"	--	7' - 0"	5' - 0"	80' - 0"	120' - 0"
60' - 1"	80' - 0"	8' - 0"	6' - 0"	60' - 0"	80' - 0"
40' - 1"	60' - 0"	9' - 0"	7' - 0"	40' - 0"	60' - 0"
0	40' - 0"	CONTACT BRIDGE OFFICE			



NOTE: THIS PLAN IS NOT A LEGAL ENGINEERING DOCUMENT BUT AN ELECTRONIC DUPLICATE. THE ORIGINAL, SIGNED BY THE ENGINEER, MUST BE SUBMITTED WITH THE PERMIT APPLICATION. A COPY MAY BE OBTAINED UPON REQUEST.

PERMANENT GEOSYNTHETIC WALL SINGLE SLOPE BARRIER STANDARD PLAN D-3.15-02

SHEET 1 OF 1 SHEET

APPROVED FOR PUBLICATION

Pasco Bakotich III

STATE DESIGN ENGINEER

6/10/13

DATE

Washington State Department of Transportation