

Tree Removal Permitting Guide



The City of Lakewood has a goal of improving tree canopy coverage. To address this goal, Lakewood Zoning Code regulates tree removals and requires permitting and replacement of removed trees.

cityoflakewood.us/trees

Measuring Your Tree

Diameter at Breast Height (DBH)

DBH is the standard measurement of tree size and is measured 54 inches (4.5 feet) above the ground.

How to measure your tree:

1. Wrap a soft measuring tape around the tree trunk at 54 inches above the ground to find the circumference. For trees with multiple trunks at 4.5 feet height, only trunks 3 inches DBH or greater should be included in your measurement (about the size of a soup can).

2. Calculate the diameter using an online calculator or by dividing the circumference by 3.14 (pi).

Example:

Circumference measures 100"/3.14 = 31.8" DBH tree.

3. When a tree splits into several trunks, the DBH for the tree is the square root (√) of the sum of the DBH for each individual stem squared.

Example:

$$DBH = \sqrt{[(stem\ 1)^2 + (stem2)^2 + \dots]}$$

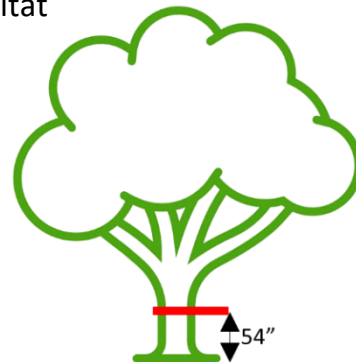
Replacement tree measurement:

Replacement trees DBH is measured at 6 inches above the ground.



What is a Significant Tree?

- Oregon white oaks (also known as Garry oaks) at least 4 inches in diameter when measured at 4.5 feet above ground.
- Evergreen and deciduous trees at least 9 inches in diameter when measured at 4.5 feet above ground.
- Any tree determined to be significant by the Community Development Director due to the uniqueness of the species or provision of important wildlife habitat



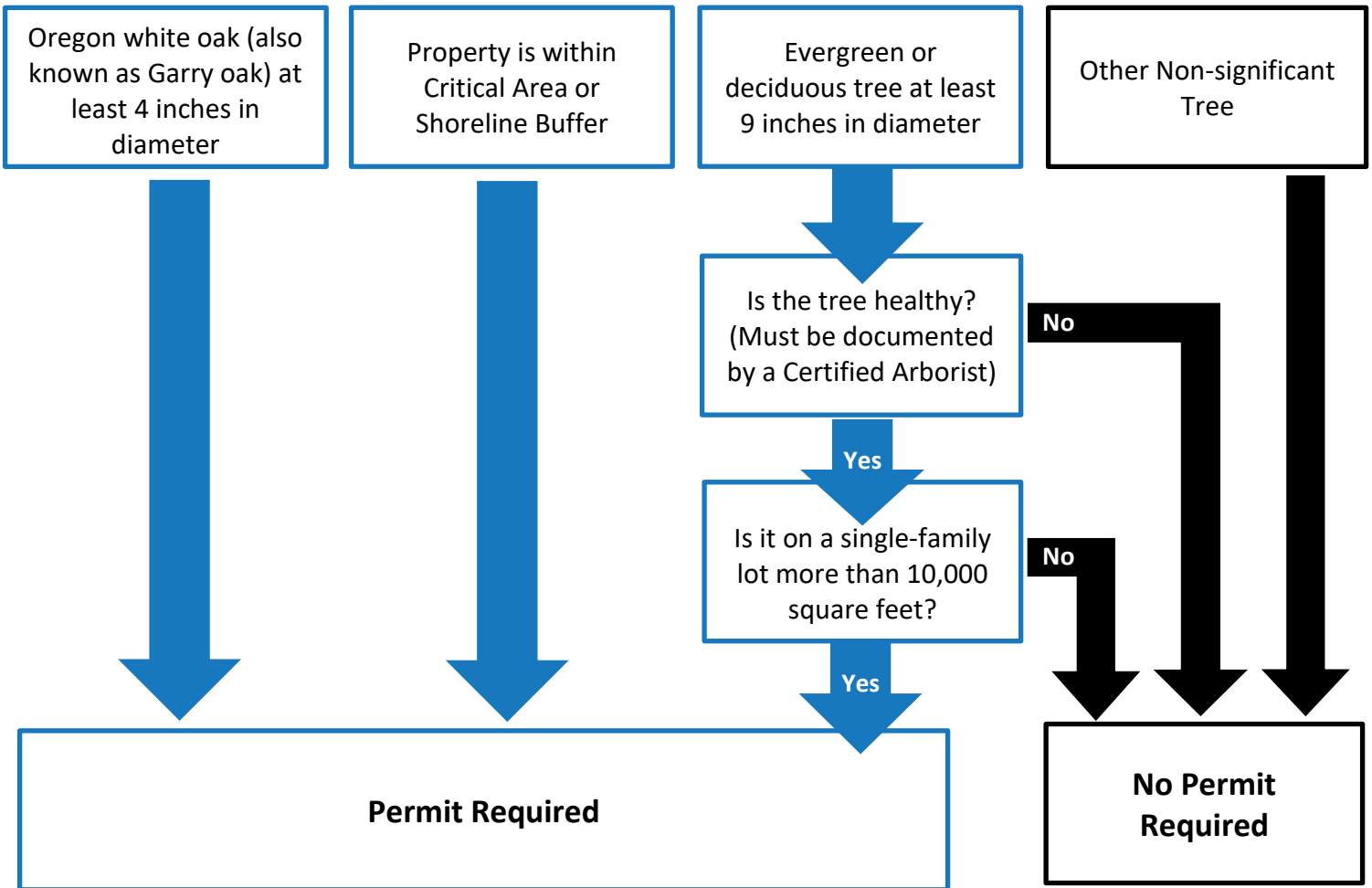
Finding an Arborist

When submitting a tree removal permit to the City for Hazard/Nuisance trees, including trees on public property, the applicant must hire a Qualified Professional Arborist certified by the International Society of Arboriculture (ISA).

For hazard trees, the Qualified Professional Arborist must have current TRAQ (Tree Risk Assessment Qualification) credentials.

If you're unsure about an arborist's credentials, you can verify them through the ISA database using the [Find an Arborist Tool: www.treesaregood.org/findanarborist](http://www.treesaregood.org/findanarborist)

Do I Need to Apply for a Tree Removal Permit?



Note: Permits are always required in the OSR1, OSR2, and PI zones.

TREE REPLACEMENT

Replacement may be required, see **LMC 18A.70.320** for preservation and replacement requirements and **LMC 18A.70.330** for additional Oregon white oak requirements.

Pruning does not require a permit when:

- Trimming tree limbs and branches for vegetation management, provided the trimming does not cause the tree to be a safety hazard.
- The pruning does not involve topping. Topping is prohibited.
- The tree is not located in a public right-of-way, critical area, or shoreline

Dead/dying or imminent hazard trees may not require a permit if:

- The tree is not an Oregon white oak
- You provide photographs and/or an Arborist report clearly illustrating the decline or threat