

Edgewater Park Master Plan Update

Parks & Recreation Advisory Board Meeting
February 6th, 2024



Edgewater Park Update Meeting Agenda

- Welcome and Introductions
- 2018 Master Plan Summary
- Master Plan Update
 - October 24, 2023 meeting review
- Alternatives 1-3 Review
- Public Input
- Next Steps



Edgewater Park



- Lake Steilacoom - 306 Acres
- 2nd largest lake in Lakewood
- Edgewater Park = 2.8 acres
- Only Public Boat Launch on the lake



Master Plan History



2018 Public Comments

Issues & Concerns

- Lack of parking - #1 issue
- No enforcement of illegal activity in park
- No enforcement on the lake
- Traffic – too fast for neighborhood
- Boat launch- steep, shallow water
- No parking for trailers
- In-water stumps are dangerous
- No maintenance
- Blackberries nuisance/block view
- Grass brown/ no irrigation
- Swimming / launch conflict
- No seating or streetlights
- No bathrooms



2018 Public Comments

Potential Solutions

- One-Way Street for Added Parking
- Pathways or Sidewalks
- Designated Fire Lane
- Speedbumps
- Increased patrol and enforcement
- Move launch (street end suggested)
- Add pier for fishing / viewing
- Add dock for launching
- Charge launch fee
- Define water/swim areas
- Add trash cans
- Provide drop-off area
- Add irrigation
- Add pet waste stations
- Add Sanican



Preferred Masterplan

- One-way road on Edgewater
- Boat Launch improved (at current location)
- Parking on Edgewater Drive and Foster St SW
- Fishing Pier & Boardwalk
- Habitat and Landscape Improvements
- Safety Lighting
- Trails & View Point
- Improved Shoreline Access
- Site Furnishings
- Sanican with enclosure



2023 Public Comments

Issues and Concerns

- Boat Launch (#1 issue)
- No defined Water Access /Swim Area
- NO Fishing access
- Invasive Plants / No Maintenance
- Traffic Conflicts
- No sidewalks or trails
- No Seating or Site Furnishings
- No Restrooms
- Dock needed at Boat Launch
- NO Lighting
- Illegal Parking
- No ADA access
- Additional Use of Site and Lake
- No Enforcement



2023 Public Comments

Potential Solutions

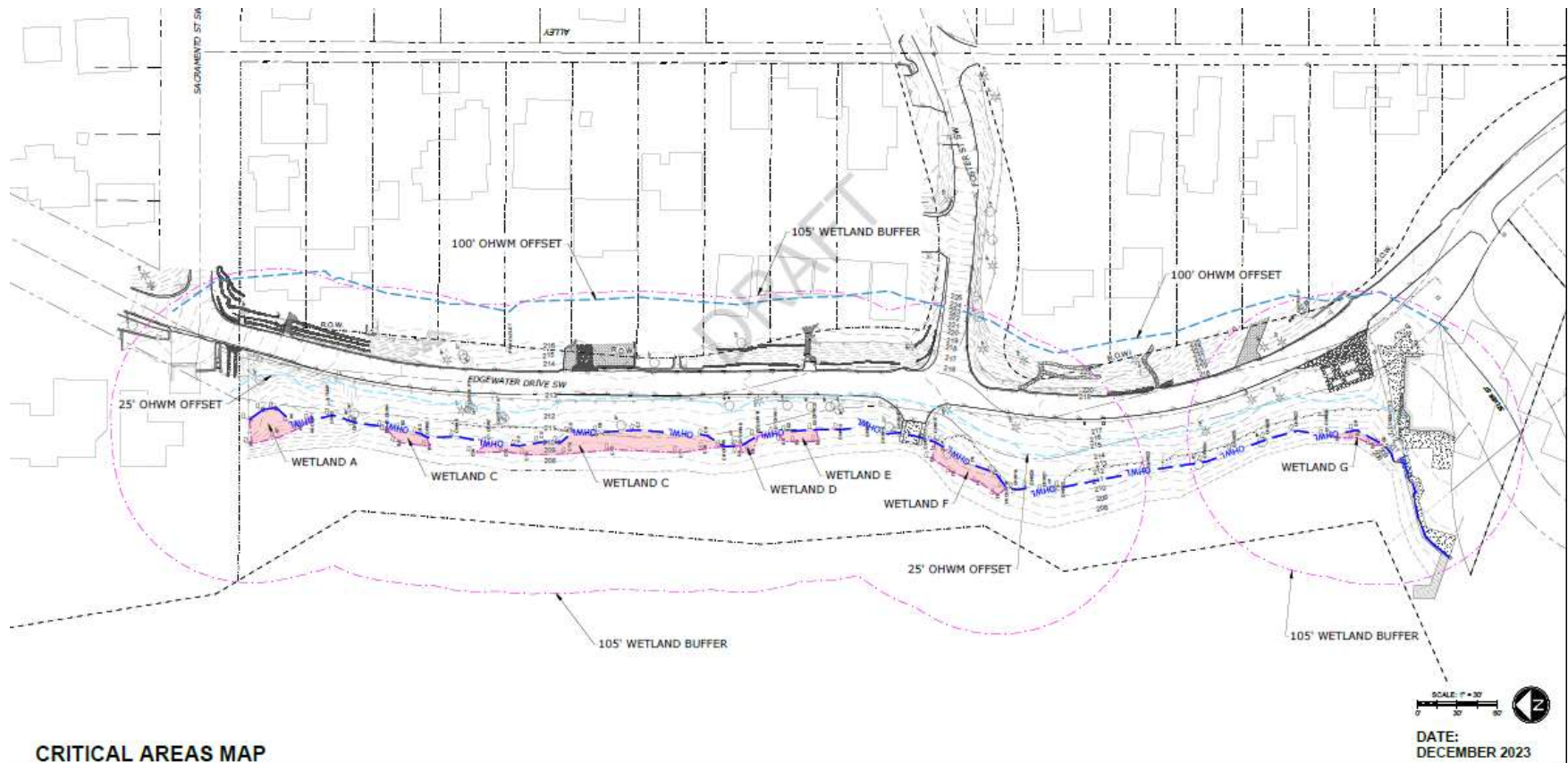
- Boat launch improvement or relocation
- One-way conversion & Parallel Parking
- Off-Street Parking expansion
- Improved water access
- Site furnishings/ Sanican
- Swim Area away from launch
- Sidewalks along Edgewater & Foster
- Load/Unload Area
- Improved Habitat / Shoreline Plantings
- Picnic Area / Small Shelter
- Designated Fishing Area
- Public Art
- Interpretive Signage
- Hand-Carry Launch
- View Point
- Increased Enforcement



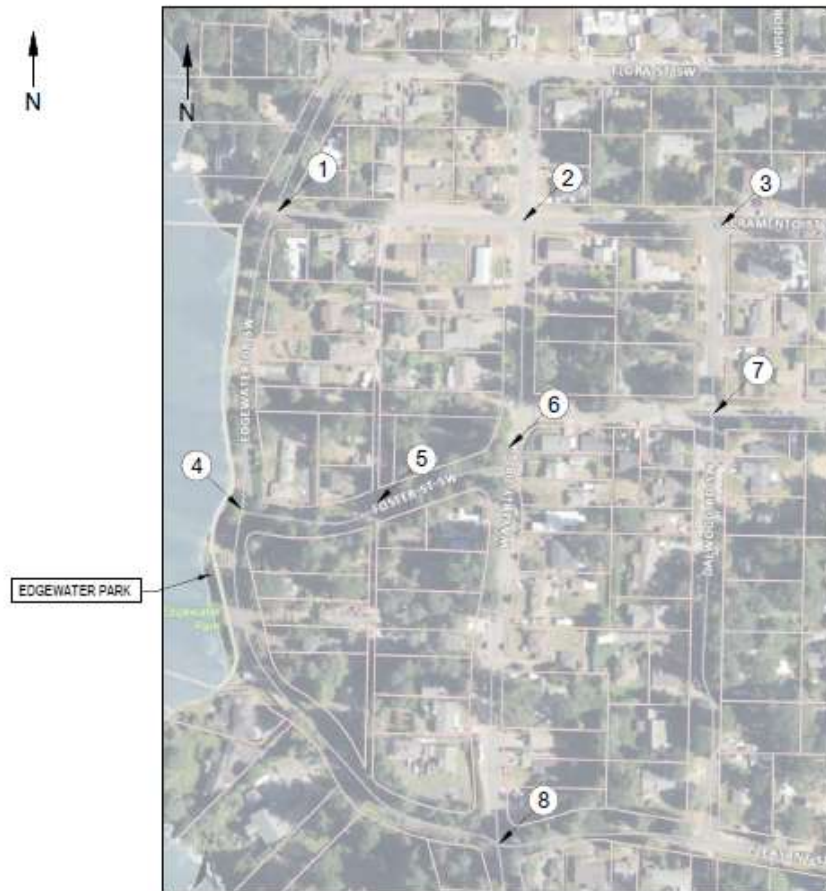
Survey Data



2023 Wetland Assessment



2023 Traffic Study Launch Data



Labor Day Weekend

Sept 1-3 (70-80 degrees)

~ Approx. 40 total launches

~67% launches motorized boats

~33% non-motorized launches



2023 Traffic Study Road Conversions



Traffic Data December 14

One-way Conversion Benefits:

Pedestrian & Vehicle Improved Safety:

- Improve safety
- Reduce collisions
- Design flexibility
- Reduced tree impacts



Alternative Design Development



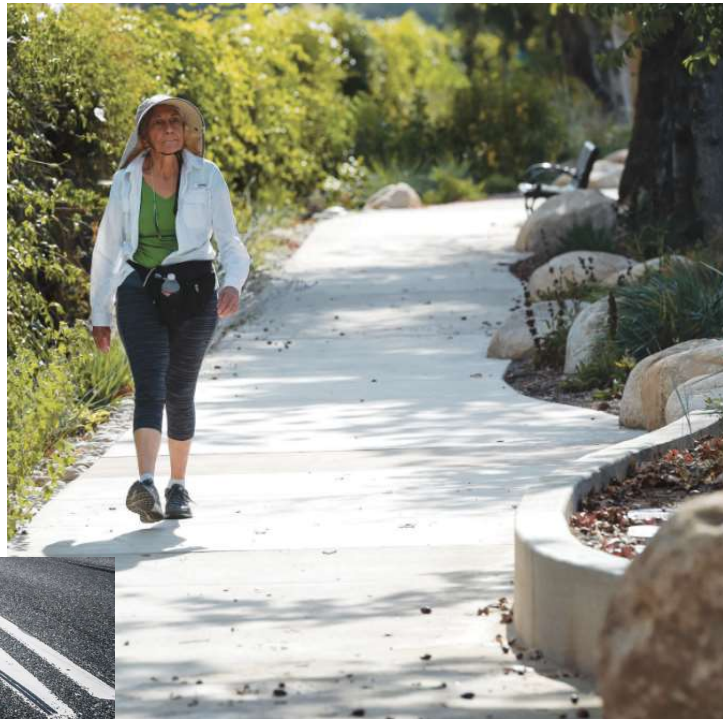
Parking & Future Use Analysis

Site Use	Parking Spots	
Walking/ Paths	1	
Picnic Shelter		10
Fishing Pier	4	
Boat Launch		10
Beach/ Water Access		8
<u>Lawn/ Passive Recreation</u>	<u>1</u>	
Total	34	

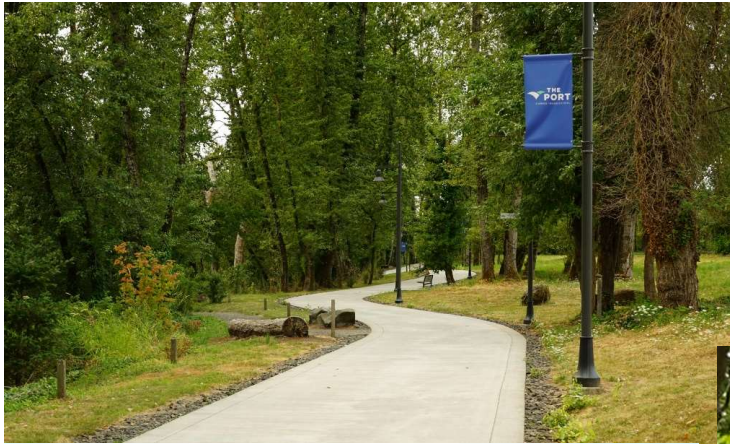


Pedestrian Access

- Crosswalks
- Sidewalks
- Traffic Calming
- Public Art



Pedestrian Access

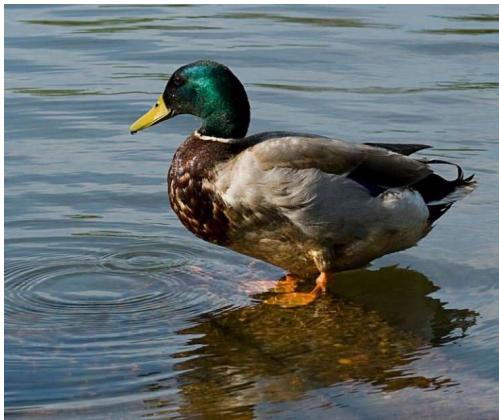


- Natural and Paved Trails
- ADA Access
- 'Shared Street' Woonerf



Critical Areas & Landscape

- Remove invasives
- Wetland preservation
- Restore native plantings
- Restore shoreline habitat



Boat Launch Improvements



- Move or Improve Launch
- Add hand-carry launch
- Load-Unload Area
- Add float at launch



Water Access

- Beach Access
- Swim Area
- Fishing Pier



Site Amenities

- Nature Play Features
- Interpretive Features
- Public Art



Site Amenities

- Picnic Shelter
- Viewpoint
- Benches / Tables / Trash Receptacles



Alternative Plan #1



DEVELOPMENT HIGHLIGHTS:

Road Conversion Summary:

Edgewater one-way (Sacramento to Foster)

Foster one-way (Edgewater to Waverly)

Parking summary: Total: 39 = 37 standard, 2 trailer load/unload

Tree impacts: 8-10 trees removed

Water Access: 5

LEGEND:

- 1 Park Sign
- 2 Nature Play Feature
- 3 Fishing Pier/Fishing Beach
- 4 Pedestrian Crosswalks
- 5 Pocket Beach
- 6 Improved Boat Launch w/ Floating Dock
- 7 Load/Unload Trailers
- 8 Designated Swimming Area
- Walkways
- Restored Buffer and Wetland Plantings
- Potential Trees To Be Removed
- Proposed Retaining Walls



Option 1

January 31, 2024

City of Lakewood - Edgewood Park



Alternative Plan #2



DEVELOPMENT HIGHLIGHTS:

Road Conversion Summary:

Edgewater one-way (Sacramento to Foster)
Foster one-way (Edgewater to Waverly)

Parking summary: Total: 31 = 27 standard, 4 trailer, 2 trailer Load/unload

Tree Impacts: 6-8 trees removed

Water Access: 6



Option 2

City of Lakewood - Edgewood Park

January 31, 2024



j.a. brennan
ASSOCIATES PLLC



Alternative Plan #3



DEVELOPMENT HIGHLIGHTS:

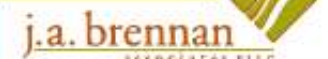
- Road Conversion Summary:
Edgewater one-way (Sacramento to Foster) – Promenade Street
Foster two-way
- New boat launch. Existing boat launch to remain until new launch is completed.
- Removed existing boat launch as required mitigation for new/relocated launch.
- Parking summary: Total: 33 = 26 standard, 5 trailer, 2 trailer load/unload
- Tree impacts: 7-8 trees removed
- Water Access: 7



Option 3

City of Lakewood - Edgewood Park

January 31, 2024



5-minute Plan Review



Review & Comments



Feedback Traffic Revisions?

- One-Way Foster
- Painted or Shared Roadway
- Traffic Calming
- Tree Impacts



Option 3 (2-way) Foster & 'Shared Road'



Option 2 (1-way) Foster

Feedback Parking?

- Edgewater Dr.
- Foster St.
- Proposed expansion area



Option 1 Shoulder Parking & Foster



Option 2 Expansion Area

Feedback Launch?

- Hand Carry Launch
- Improve
- Move



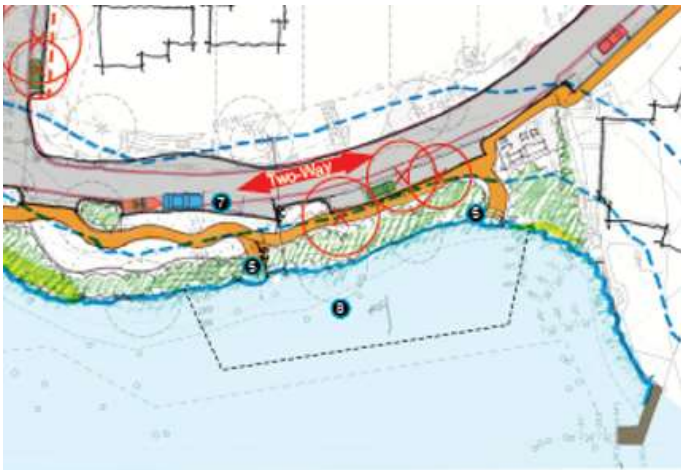
Option 3 (Move Launch)



Option 2 (Improve Launch)

Feedback Swim Area?

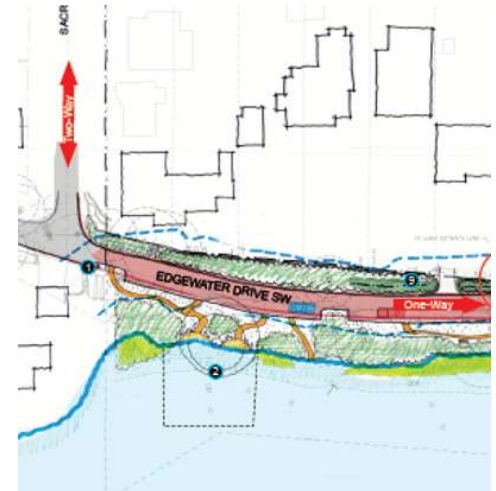
- Swim Area Size or Location?



Option 1



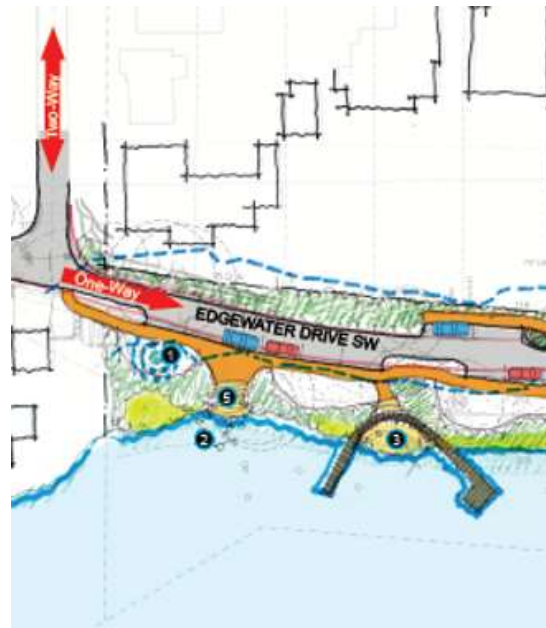
Option 2



Option 3

Feedback Park Improvements?

- Fishing Pier
- Picnic Areas/ Shelter
- Public Art
- Viewpoint
- Other Feedback?



Option 1 (Expansive Fishing Pier)



Option 2 (Small Dock)

Next Steps

- Review comments
- Finalize preferred alternative
- Develop a cost estimate + phasing
- PRAB Review – March 26
- City Council - April 8 study session



Questions

