

BCRA
2106 Pacific Avenue, Suite 300
Tacoma, Washington 98402
(253) 627-4367

Wards Lake Park Phase 1 & 2 Improvements

City of Lakewood Parks and Recreation

ADDENDUM NO. 4

November 19, 2024

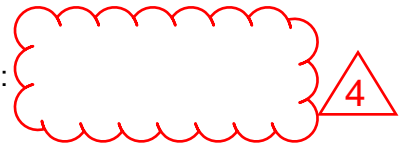
This Addendum forms a part of the Contract Documents and modifies the original Contract Documents dated October 29, 2024 as noted below. Acknowledge receipt of this Addendum in the space provided on the Bid Form. Failure to do so may subject Bidder to disqualification.

This Addendum is issued to all known Plan Holders.

This Addendum consists of [3] pages plus attachments.

ATTACHMENTS

NOTE: Addendum changes to the Drawings are issued on full size drawing sheets; these changes are noted by a cloud drawn around the change and a revision number in a triangle as follows:



1. Advertisement For Bids (1 pages)
2. Revised Specification Section 32 0190 – Operations and Maintenance Of Landscape (11 pages)
3. Revised Specification Section 32 3300 – Site Furnishings (10 pages)
4. Revised Specification Section 32 9200 – Turf And Grasses (11 pages)
5. Revised Drawing Sheet C-003 (1 page)
6. Revised Drawing Sheet C-102 (1 page)
7. Revised Drawing Sheet C-202 (1 page)
8. Revised Drawing Sheet C-302 (1 page)
9. Revised Drawing Sheet C-311 (1 page)
10. Revised Drawing Sheet C-504 (1 page)
11. Revised Drawing Sheet L-102 (1 page)
12. Revised Drawing Sheet L-102.1 (1 page)
13. Revised Drawing Sheet L-302 (1 page)
14. Revised Drawing Sheet E-101 (1 page)

ADDENDUM NO. 4 GENERAL SUMMARY

Addendum No. 4 is being issued to remove the precast pump track and associated paved pathways, site furnishings and landscaping from bidder's scope of work as noted on the following specifications and drawing sheets. This work will still be part of the overall project but will be sourced by the Owner.

ADDENDUM NO. 4

Wards Lake Park Phase 1 & 2 Improvements
Lakewood, Washington
November 19, 2024

PAGE 1 OF 3

PRIOR ADDENDUM REVISION

ADDENDUM NO. 2 issued on November 15, 2024

REDACT Item #3 under the Questions and Clarifications section

SPECIFICATIONS

ADVERTISEMENT FOR BIDS

REVISE the first paragraph regarding bid closing date and addendum date to read,

“Sealed bids will be accepted at Lakewood City Hall, 6000 Main Street SW, Lakewood, WA 98499-5027 until 2:00 p.m., and not later, on Tuesday, November 26th, 2024. Bid results will be read aloud in the American Lake Conference room and tabulated immediately following. Bidders Requests for Information (RFI) shall be received no later than 4pm, Friday, November 8th, 2024. A final Addendum will be issued by Tuesday, November 19th, 2024.

REMOVE “precast pump track” from scope of work paragraph

SECTION 32 0190 – OPERATION AND MAINENANCE OF LANDSCAPE

REMOVE 3.07

SECTION 32 3300 – SITE FURNISHINGS

REMOVE 1.03.I

REMOVE 1.07

REMOVE 2.02.B

REMOVE 3.11

SECTION 32 9200 – TURF AND GRASSES

REMOVE 2.01.F

DRAWINGS

(This narrative includes a brief description of addendums items. All clouded items on the addendum sheet to be removed from the project bid.)

SHEET C-003 – SCHEDULE OF VALUES PLAN

ADDENDUM NO. 4

Wards Lake Park Phase 1 & 2 Improvements
Lakewood, Washington
November 13, 2024

REMOVE precast pump track from bidder scope of work

SHEET C-102 – DEMOLITION AND TESC PLAN

REMOVE precast pump track area from bidder scope of work. Identify a few items in the general vicinity of the pump track that will remain in bidder scope.

SHEET C-202 – SITE AND SURFACING PLAN

REMOVE precast pump track area from bidder scope of work.

SHEET C-302 – GRADING, DRAINAGE, AND UTILITY PLAN

REMOVE precast pump track area from bidder scope of work. This includes the proposed storm catch basins and infiltration trenches in the pump track area.

SHEET C-311 – DETAILED GRADING PLAN

REMOVE precast pump track area from bidder scope of work. This includes the grading work in the pump track area. The swale revisions to remain in the bidders scope of work.

SHEET C-504 – CIVIL DETAILS

REMOVE details 3 and 4 associated with the precast pump track from bidder scope of work.

SHEET L-102 – LANDSCAPE PLAN

REMOVE landscape scope from pump track area

SHEET L-102.1 – NOTES & SCHEDULES

REMOVE pump track area – seed mix from bidder scope of work

SHEET L-302 – IRRIGATION

REMOVE pump track area from bidder scope of work. Graphically noting this for plan consistency

SHEET E-101 – ELECTRICAL SITE PLAN, LEGEND, PANEL SCHEDULES & NOTES

REMOVE pump track area from plan. Graphically noting this for plan consistency

END OF ADDENDUM NO. 4

ADVERTISEMENT FOR BIDS

Wards Lake Park Phase 1 & 2 Improvements

City of Lakewood Project No.: 301.0020

Sealed bids will be accepted at Lakewood City Hall, 6000 Main Street SW, Lakewood, WA 98499-5027 until 2:00 p.m., and not later, on Tuesday, November 19th, 2024. Bid results will be read aloud in the American Lake Conference room and tabulated immediately following. Bidders Requests for Information (RFI) shall be received no later than 4pm, Friday, November 8th, 2024. A final Addendum will be issued by Wednesday, November 13th, 2024.

4

Bidders shall be qualified for the type of work proposed. A Bidder's Construction Experience form is included in the Contract Provisions. A non-mandatory Pre-Bid walkthrough will be held Tuesday November 5th, 2024, at 11:00am. Interested bidders shall meet at the northern parking lot at Wards Lake Park: 2716 84th St Ct S, Lakewood, WA 98499.

This contract provides for the construction opportunity of following scope of work:

A redevelopment of portions of Wards Lake Park. This work will include temporary erosion control, clearing/grubbing, excavation, pavement demolition, temporary erosion control, crushed aggregate, cement concrete paving, asphalt paving, curbing, trail development, rockery, play equipment, prefabricated restroom installation, prefabricated bridge installation, prefabricated shelter installation, handrails, storm drainage improvements, utility improvements, precast pump track, topsoil, irrigation, landscaping, restoration plantings and all other work necessary to complete the project as specified and shown in the Contract Documents. Project Base Bid Estimate only ranges from \$3,360,000 To \$3,960,000 excluding WSST.

4

Online Advertisement - Plans, Project Manual, addenda, and plan holders list for this project are available on-line through Builders Exchange of Washington, Inc. at <http://www.bxwa.com>. Click on: "Posted Projects"; "Public Works"; "City of Lakewood, WA." Bidders can "Register as a Bidder", in order to receive automatic email notification of future addenda.

All bids shall be submitted on the prescribed Bid Forms and in the manner as stated in this advertisement and in the Bid Documents, and said bids shall be accompanied by a bid deposit in the form of cash, cashier's check, certified check, postal money order, or a surety bond to the City of Lakewood in the amount of five percent (5%) of the total amount of the bid. **Faxed bids and/or surety bonds will not be accepted.** Bids must be submitted in a sealed envelope with the outside clearly marked with the bid opening date and time, the project name and number as it appears in this advertisement and the name and address of the bidder.

The Wards Lake Park Phase 1 & 2 Improvements project is funded, in part, through federal grants and must maintain compliance with the Davis-Bacon Act (40 U.S.C. 3141-3148) as supplemented by Department of Labor regulations (29 C.F.R. § 5, "Labor Standards Provisions Applicable to Contracts Covering Federally Financed and Assisted Construction"). The project must also maintain compliance with the Copeland "Anti-Kickback" Act (40 U. S. C. 3145), as supplemented by Department of Labor regulations (29 C.F.R Part 3, "Contractors and Subcontractors on Public Building or Public Work Financed in Whole or in Part by Loans or Grants from the United States"). The Act provides RCO: 22-1724 Revision Date: 10/26/2023 Page 36 of 39. 36% of this project is federally funded through the National Parks Service Land and Water Conservation Funds totaling \$2,210,430. No portions of the project are funded by non-government sources.

The City of Lakewood, in accordance with Title VI of the Civil Rights Act of 1964 (78 Stat. 252, 42 U.S.C. 2000d to 2000d-4) and the Regulations, hereby notifies all bidders that it will affirmatively ensure that in any contract entered into pursuant to this advertisement, disadvantaged business enterprises will be afforded full and fair opportunity to submit bids in response to this invitation and will not be discriminated against on the grounds of race, color or national origin in consideration for an award. The City of Lakewood, in accordance with Section 504 of the Rehabilitation Act (Section 504) and the Americans with Disabilities Act (ADA) commits to nondiscrimination on the basis of disability, in any of its programs' activities. This material can be made available in an alternate format by contacting Stacey Reding at (253) 983-7852.

The City of Lakewood reserves the right to waive informalities in the bidding, accept a proposal of the lowest responsible bidder, reject any or all bids, republish the call for bids, revise or cancel the work, or require the work to be done in another way if the best interest of the City is served.

Briana Schumacher
City Clerk

Daily Journal of Commerce
Tacoma News Tribune

Publish: October 29, 2024
Publish: October 29, 2024

SECTION 32 0190

OPERATION AND MAINTENANCE OF LANDSCAPE

PART 1 GENERAL

1.01 RELATED DOCUMENTS

- A. Drawings and general provisions of the Contract, including General Conditions, Supplementary Conditions and Divisions 00 and 01 Specification Sections, apply to work of this section

1.02 SUMMARY

- A. Provide supervision, labor and materials to maintain all new and restored landscaping and irrigation systems during the one-year maintenance period. The one-year maintenance contract shall begin at the date of Final Acceptance.

The work includes:

1. Plant management and maintenance including ecologically sound care and best management practices.
2. Weeding of all newly planted areas and hydroseeded areas.
3. Mowing, edging, and trimming.
4. Top dressing of mulch.
5. Fertilizer application.
6. Irrigation data gathering, management and maintenance.
7. Watering.
8. Winterization and spring startup of irrigation systems.
9. Cleanup of litter and debris.

1.03 RELATED SECTIONS

- A. Coordinate related work specified in other parts of the Project Specifications, including but not limited to the following:
 1. Section 32 84 00 – Irrigation
 2. Section 32 92 00 – Lawns and Seeding
 3. Section 32 93 00 - Planting

1.04 QUALITY ASSURANCE

- A. Experience:
 - 1. Contractor's maintenance crew shall be experienced in landscape maintenance and shall have adequate knowledge of Pacific NW native plant material, ornamental horticulture and integrated pest management (IPM) practices.
 - 2. Contractor's maintenance crew shall include plant expert able to differentiate between native prairie and meadow plants and weeds. Plant expert shall be able to identify native prairie and meadow plants during different stages in the plants' life cycles including seedling, young plant, flowering plant, and winter cessation or dormancy stages. Weeding shall be performed by and/or under the supervision of the plant expert.
- B. Unless approved by Owner's Representative, herbicides, pre-emergent herbicides, and insecticides are not allowed for general weed and pest control. Before use of any herbicides, insecticides, or disease control chemicals, secure Owner's Representative written approval. Furnish Owner's Representative with a monthly record of all herbicides, insecticides and disease control chemicals used, if any.
- C. Contractor shall provide all grounds maintenance equipment necessary for the contract.
- D. Contractor shall submit monthly letter report Owner's Representative stating:
 - 1. Schedule of maintenance activities.
 - a. Irrigation schedule to include precipitation rates per zone, per month.
- E. Coordinate with City O&M staff on or before April 1st to establish irrigation schedule.
- F. Begin soil moisture monitoring by April 1 to assure that plants are adequately watered at the beginning of the growing season in spring.
- G. All ornamental lawns shall be maintained in accordance with the 'Calendar of Recommended Lawn Maintenance Practices for the Puget Sound Region', to the level of 'Extra practices for Higher Maintenance Lawns', as outlined in Ecologically Sound Lawn Care for the Pacific Northwest, 1999, by Seattle Public Utilities (206-684-7560). The meadow and wildflower prairie not ornamental lawns.

1.05 SUBMITTALS

- A. Fertilizers: Submit cutsheet materials and application schedule/rates for proposed planting and lawn fertilizers to Owner prior to use. Fertilizers to be slow-release, organic, and phosphorus-free.

1.06 DOMESTIC PRODUCTS

- A. Products shall comply with the requirements of the “Build America, Buy America Act”, term effective as of January 13, 2023; refer also to RCO Grant Agreements included in the appendices of the Project Manual for additional information.

PART 2 PRODUCTS

PART 3 EXECUTION

3.01 MAINTENANCE SCHEDULE

- A. Landscape Contractor shall review maintenance specifications with Landscape Architect and Owner’s Representative. Maintenance is to be provided throughout construction and for one year for all areas following construction beginning at final acceptance.
- B. Maintenance will be conducted on a routine, year-round basis for all plantings. Additional maintenance needs are to be identified and addressed following quarterly maintenance review by Owner’s Representative. Maintenance shall be implemented following schedule attached to this specification and on an as needed basis at the direction of Owner’s Representative.

3.02 WEED CONTROL

- A. Routine removal and control of nonnative and other invasive plants (e.g., Scotch broom, Reed Canary grass, Himalayan, cut-leaf and evergreen blackberry, purple loosestrife, Japanese, Bohemian and Giant Knotweed, English Ivy, morning glory, birdsfoot trefoil, all varieties of thistle, and bittersweet nightshade) shall be performed by manual or mechanical methods (chemical methods to be approved by Owner’s Representative). Undesirable and weedy exotic plant species shall be controlled at levels below 10% total cover within any given area at any given time during the 1-year maintenance period.
- B. Exception:
 - 1. No coverage of Bohemian and Giant Knotweed is allowed. Take immediate action to eradicate these weeds if present.
 - a. Weeds within the meadow and native shoreline planting shall not exceed 5% cover. It is critical during early (first two years) establishment of these areas that weeds are not allowed to go to seed and build up a seed bank of weed species in the soil.

3.03 IRRIGATION

- A. Operation: Keep irrigation operational at all times during the growing season and repair irrigation system if necessary. Contractor shall provide supplemental hand watering if necessary.
- B. Inspection: The Landscape Contractor shall inspect the irrigation system in the spring and mid-season to ensure adequate coverage and function to the entire system. All repairs, resetting of heads and adjustments shall be performed when problems arise. In the fall, the system shall be winterized by November 15th to prevent winter freeze damage.

3.04 TREE AND SHRUB CARE (EXCLUDES NATIVE SHORELINE PLANTING AREA)

- A. Watering:
 - 1. All trees and shrubs shall be watered by thorough deep watering during the dry season (May 15 to October 1), or as necessary, to keep the plants healthy and vigorous, and to prevent wilting. Do not overwater.
- B. Pruning:
 - a. Woody plants shall only be pruned at the direction of Owner's Representative or to remove pest infestations (i.e. tent caterpillar).
 - 2. Pruning of Deciduous Trees: Prune trees during the dormant season to eliminate diseased or damaged growth.
 - 3. Pruning of Coniferous Trees: Prune only to eliminate diseased or damaged growth.
 - 4. Pruning of Shrubs: Follow procedures as outlined for deciduous trees. Do not prune shrubs into ball shapes, and do not prune off lower branches. Allow shrubs to spread and form masses to prevent weed growth below the shrubs.
 - 5. Pruning Cuts: Make to lateral branches or buds, or flush with trunk.
- C. Staking: Repair tree stakes as needed. Remove stakes as soon as they are no longer needed, but no later than one year after installation. Inspect and adjust stakes and connections to provide support, to prevent girdling of trunks or branches, and to prevent rubbing that causes bark wounds.
- D. Weed Control: Keep planting areas free of weeds. Do not use broadcast herbicides. Remove weeds manually or by torch. Avoid frequent soil cultivation that destroys shallow roots.
- E. Insect and Disease Control: Maintain a reasonable control with approved materials, using best management practices and least toxic methods.

- F. Fertilization:
 - 1. Fertilize in early spring and late spring, all recently established plants with slow-release, organic, fertilizer.
 - 2. Avoid applying fertilizer to root ball and base of main stem. Spread evenly under plant to drip line.
- G. Replacement of Plants: Report dead and dying plants immediately to Owner's Representative, and replace within 30 days of notification by Owner's Representative with plants of equal size, condition, and variety of original planting. If several plants of the same species are failing within an area, a substitute species that has been approved by Landscape Architect or Owner's Representative may be used.
- H. Fall Clean-up: Remove fallen leaves once every two (2) weeks within the dates November 15 to December 15. Prior to and after this time period, leaf litter shall be removed around building entrances and surface drainage structures once every two weeks.

3.05 GROUND COVER CARE (EXCLUDES NATIVE SHORELINE PLANTING AREA)

- A. Watering: All groundcover beds shall be watered by thorough deep watering every week, or more often, during the dry season (approximately May 15 to October 1), to keep the ground moist at root-level, to keep the plants healthy and vigorous, and to prevent wilting. Do not overwater.
- B. Fertilize in early spring and late spring with slow-release, organic, fertilizer.
- C. Remove trash to maintain attractive appearance.
- D. Report dead and missing plants immediately to Owner's Representative and replace within 30 days of notification by Owner's Representative with plants of equal size, condition, and variety of original planting.
- E. Repair mulch areas with specified mulch, and maintain full depth of mulch as indicated on Drawings.

3.06 LAWN CARE (AREAS W/ AUTOMATIC IRRIGATION)

- A. Location: Lawns at north and south entries to park
- B. Watering (during establishment): water at such frequency as weather conditions require to replenish soil moisture below root zone (12 inch depth). A total of one (1) inch of water is needed weekly in hot, dry weather.
- C. Weed Control: Provide adequate level of weed control to maintain a healthy stand of grass that is uniform, free of weeds and surface irregularities. Grass coverage at any given time shall exceed 90 percent over any 10 sq. ft and bare spots shall not exceed 3x 3 inches.

- D. Fertilization of Ornamental Lawn: Turf shall be fertilized with a natural, or bridge-type combination fertilizer (part natural, part synthetic slow release), 6-2-4, at the rate of 1 pound nitrogen per 1,000 square feet. Acceptable brand is Nature Safe, or approved substitute.
- E. Subsequent fertilization and maintenance practices not specified herein shall be in accordance with referenced document listed in 1.3 F.
- F. Mowing and Edging of lawns:
 - 1. When lawn is well established, mow twice per month to maintain lawn height of 3 inches. Trim edges once monthly for neat appearance. Do not leave clippings on paved areas.
 - 2. Remove clippings from lawns and paved surfaces and dispose of off-site. If using a mulching mower, leave clippings in place in lawn areas. Do not allow buildup of mulch that is deleterious to health of lawn.
- G. Seeding: Reseed, mulch, and repair any bare areas and washout in lawn areas.

3.07 PUMP TRACK LAWN AREA

- A. Watering (during establishment): Water at such frequency as weather conditions require to replenish soil moisture below root zone (12 inch depth). A total of one (1) inch of water is needed weekly in hot, dry weather. Watering can be discontinued once planting is established.
- B. Weeding is a top priority for the first year. Remove weeds before they are able to produce seeds. Presences of weeds within the pump track lawn shall not exceed 5% total cover.
- C. Fertilizer: Do not apply fertilizer or lime to any of these areas.
- D. Mowing: Mow the lawn once after it first reaches 6 inch height. No mowing is required after the first mowing.
- E. Repair: Reseed, mulch, and repair any bare areas and washout.

3.08 MEADOW AND SHORELINE SEEDED AREAS

- A. The following maintenance requirements apply for areas planted with native seed mixes, meadow seed mixes, or planted with wetland emergent plugs.
- B. Watering during establishment: Water at such frequency as weather conditions require to replenish soil moisture below root zone (12 inch depth). Watering is not required once planting is established and accepted.

- C. Weeding is a top priority for the first several years of meadow and native shoreline establishment to prevent suppression of native species by weeds and to prevent spread of weed seeds. Remove weeds before they are able to produce seeds. Presences of weeds within the meadow and areas seeded with native seed mix shall not exceed 5% total cover.
1. Weeds includes vegetation that is unwanted in the different planting areas. In seeded meadow areas, remove woody vegetation (i.e. shrubs and vines) and tree seedlings and saplings. In shoreline seeded areas, remove herbaceous plants, shrubs, and seedling trees that are not native. The native horsetail does not require removal from shoreline areas.
 2. Control shall follow nonchemical IPM control techniques outlined in Pierce County's Best Management Practices, Alerts, and other documents posted on the Noxious Weed websites. Pesticide applications can only be considered as a last resort when non-chemical methods have proved ineffective.
 3. Mandate: Weed and Pest Control is mandated by state weed control law, Chapter 17.10 RCW. Assistance and weed lists (Class A, B, C, Non-designate, and Weeds of concern) are available from the County Noxious Weed Control Programs.
 4. Weed Lists: Be current on all State, county, and local noxious weed lists and provide these to the Landscape Architect as requested. IPM Requirements: Identify and control the weeds listed above and the Class A, B, or C Weeds as indicated by the County (King, Pierce, and Snohomish) Noxious Weed Control Board.
- D. Fertilizer: Do not apply fertilizer or lime to any of these areas. Fertilizer and lime would favor growth of weeds and non-native vegetation. Fertilizer will negatively impact water quality of adjacent water bodies.
- E. Mowing: The native seed and meadow areas shall not be mowed during the first two growing seasons. The emergent areas shall never be mowed or cut.
- F. Repair: Reseed, mulch, and repair any bare areas and washout.

3.09 SHORELINE PLANTING (CONTAINERIZED PLANTS AND PLUGS)

- A. General: Landscape establishment shall consist of providing adequate and proper care for plant materials and landscape areas within the Contract limits during the landscape establishment period to ensure the resumption of growth of the installed material. The landscape establishment period is a 365 day period that the contractor must maintain the health and vigor of all installed plant material. It begins once the plant material is installed and Substantial Completion is established in all landscape areas. The landscape establishment period shall begin immediately upon written notification from the Landscape Architect of the acceptance of planting for the entire Contract. Proper care shall include protection of plants from foraging and browsing as needed to allow establishment of the plants for a minimum of 365 days. Materials used to protect plants from foraging and browsing shall not be left in place without written authorization by the Owner's Representative.
- B. Maintenance shall include watering, weeding, remulching, and repair of stakes as required to keep the plant material in a healthy growing condition and to keep the planted areas neat and attractive in appearance throughout the landscape establishment period.
- C. Plant Materials:
 - 1. The Contractor shall be responsible for the loss of plant material, whether dead or missing, from the time the plants arrive on the project site to the end of the landscape establishment period.
 - 2. Replace dead or missing plants prior to installation, including plants stolen or damaged by acts of others.
- D. Watering: The Contractor shall be responsible for defining sources of irrigation water, obtaining necessary permits (if needed), transporting water (if needed), and applying water to the site. The Contractor shall be responsible for the watering patterns and timing. If water restrictions are established, develop watering schedules in consultation with the Landscape Architect. During the one-year maintenance period, water at minimum once per month in July, August, and September to replenish soil moisture to a depth of 12 inches.
- E. Mulch: Mulch material shall be applied and replaced when directed by the Landscape Architect. The final mulch application shall be made one (1) week before inspection for acceptance.
- F. Inspection of Work: A general cleanup shall be made after any work performed by the Contractor during the landscape establishment period.

- G. Weed and Pest Control: The Contractor shall maintain all planted areas in a weed-free condition during the landscape establishment period. The planted areas include the mulched rings and all areas between and around the planting zone. Mechanical and non-chemical control of both weeds and pests shall be allowed subject to the approved IPM and acceptance by the Landscape Architect. Pesticides and herbicides are prohibited from use on this project. Definitions are as follows:
1. Provide weeding of all areas in accordance with the approved Integrated Pest Management Plan (IPM)
 2. Pest: includes any living entity that may damage plants.
 3. Weed: includes any vegetation that is unwanted on the project site. It may include Washington State noxious weeds, undesirable native or non-native plant. If noxious weeds listed as Regulated Class A in Washington State are discovered within the project site, notify the Owner's Representative and Landscape Architect before attempting to remove from site.
- H. Maintain plant materials from the time of planting until the plant materials are well established and are exhibiting vigorous growth. One hundred (100) percent of the plants shall be found healthy and vigorous at the end of the landscape establishment period. Plant material in poor condition shall be removed, disposed of, and replaced by the Contractor according to a schedule set by the Landscape Architect. The Landscape Architect shall be the leading authority for plant material acceptance at any time during the course of this contract.

3.10 GENERAL MAINTENANCE ITEMS

- A. Debris Removal- the Landscape Contractor shall remove all trash and other debris on a weekly basis. Contractor shall remove and dispose of dead plant material or organic debris.
- B. Erosion and Drainage Problems – the Landscape Contractor, under the direction of the Owner's Representative, shall correct any erosion and drainage problems (e.g. bank or berm slumps, etc.).
- C. Foraging and Browsing- The Landscape Contractor shall implement measures to prevent damage to plant materials by browsing (e.g., deer, rabbits, mice, voles, etc.) Report to Owner's Representative damage observed and actions Contractor will take to prevent further damage.

3.11 CONTINGENCY ITEMS

- A. These items will be identified on as needed basis only.

1. Replace dead plants-The Landscape Contractor shall replace dead plants with the same species, or a substitute species that has been approved by Landscape Architect or Owner's Representative. Landscape Architect/ Owner's Representative shall review plant material and staked locations (if trees) prior to installation. Plant materials shall meet the same specifications as the originally installed material.
2. Replant area- The Landscape Contractor shall replant areas after reason of failure has been determined (e.g., moisture regime, poor plant stock, disease, shade/sun conditions, wildlife damage, etc.). Areas will be replanted with an approved species or a substitute species under the direction of Landscape Architect or Owner's Representative.

3.12 MAINTENANCE PERIOD MEETINGS

- A. Contractor shall facilitate meetings with Owner's Representative to conduct an on-site review of maintenance work monthly during one year maintenance period. Owner's Representative shall provide written notification of corrections to work.
- B. Replacement of stolen or vandalized irrigation equipment or plant material:
 1. Notify Owner's Representative immediately of losses and damages, with follow-up report in writing. Owner's Representative shall decide whether the replacement shall be done and by whom. The costs for replacement or repair other than as specified in irrigation, planting, or miscellaneous routine maintenance shall be a reimbursable expense within the maintenance agreement.

3.13 SUBSTANTIAL COMPLETION AND FINAL INSPECTION

- A. At completion of the contract period, the substantial completion inspection shall be performed by the Owner's Representative.
- B. Final Inspection:

WARDS LAKE PARK Maintenance Schedule
All areas

	Planting beds						Lawns			Meadow & Shoreline		
	Remove Trash, Weekly	Remove leaf and branch debris	Trim planted areas along paved edges	Weed planted areas	Prune trees and shrubs	Irrigation system	Add wood chips	Ornamental lawns: Mowing and trimming of lawn edges	Fertilizer	Weeding	Watering	Add wood chips in shrub and tree areas
JANUARY	Weekly											
FEBRUARY	Weekly			1 time			After 1 st weeding		1 time			After 1 st weeding
MARCH	Weekly			2 times				Start March 15	2 times			
APRIL	Weekly	As needed		2 times		System Start-up		monthly	2 times			
MAY	Weekly		1 time	1 time	Prune suckers			monthly	1 time			
JUNE	Weekly			1 time				monthly	1 time			
JULY	Weekly			1 time				monthly	1 time			
AUGUST	Weekly	As needed		1 time				monthly	1 time	Shoreline: Minimum 1 time.		
SEPTEMBER	Weekly	As needed	1 time	1 time				monthly	1 time	Shoreline: Minimum 1 time.		
OCTOBER	Weekly	1 major leaf clean up		1 time		System Winterizing		monthly	1 time	Shoreline: Minimum 1 time.		
NOVEMBER	Weekly	2 times As needed						monthly	1 time	Shoreline: Minimum 1 time.		
DECEMBER	Weekly	1 time										

END OF SECTION

SECTION 32 3300
SITE FURNISHINGS

PART 1 GENERAL

1.01 RELATED DOCUMENTS

- A. Drawings and general provisions of the Contract, including General Conditions, Supplementary Conditions and Divisions 00 and 01 Specification Sections, apply to work of this section.

1.02 SUMMARY

- A. General: All site furnishings shall be constructed and installed as shown on drawings and per manufacturer's recommendations.
- B. Workmanship: Workmanship shall be of acceptable quality and performed to the satisfaction of the Owner's Representative.

1.03 SECTION INCLUDES

- A. Trash / Recycling Receptacles.
- B. Site Benches.
- C. Site Picnic Tables, Cluster Seating.
- D. Site Picnic Tables, Bench Style.
- E. Site Bicycle Racks.
- F. Pet Waste Receptacle
- G. Water Pump.
- H. Drinking Fountain
- I. Precast Cement Concrete Pump Track.
- J. Non-Slip Treads.
- K. Park Map



1.04 REFERENCES

- A. References shall be the edition current as of the date of the Contract Documents.
- B. ADA Standards - 2010 ADA Standards for Accessible Design.

1.05 SUBMITTALS

- A. Refer to Section 01 3300 for submittal procedures.
- B. Product Data: Submit manufacturer's product literature describing each product, features and options. Include manufacturer's installation instructions.
- C. Submit shop drawings for all items requiring fabrication and/or assembly.

1.06 DELIVERY, STORAGE AND HANDLING

- A. Deliver and store in conformance with manufacturer's recommendations.

1.07 PRE-INSTALLATION CONFERENCE

- A. Prior to start of the precast cement concrete pump track installation, Contractor shall schedule a pre-installation conference at the job site to review the project conditions and installation requirements.
- B. Persons attending pre-installation conference shall include the Contractor, precast cement concrete pump track installer, earth work subcontractor, precast cement concrete pump track manufacturer's designated field service representative, Civil Engineer, and Owner Representative(s).

4

1.08 DOMESTIC PRODUCTS

- A. Products shall comply with the requirements of the "Build America, Buy America Act", term effective as of January 13, 2023; refer also to RCO Grant Agreements included in the appendices of the Project Manual for additional information.

PART 2 PRODUCTS

2.01 OWNER-FURNISHED / CONTRACTOR-INSTALLED (OFCI) SITE FURNISHINGS

- A. Trash / Recycling Receptacle
 - 1. Manufacturer / Product: Wabash Valley, *32 Gallon Receptacle- Diamond (model #: LR300D)*.
 - 2. Specifications:
 - a. Mounting: Surface mounted.
 - b. Color: Green.
- B. Site Benches
 - 1. Manufacturer / Product: Wabash Valley, *6' Bench With Back #SG306D and 6' Bench Without Back #SG307D*.
 - 2. Specifications:

- a. Site Bench, With Back
 - 1) Size: 6' bench.
 - 2) Style: Bench with Back
 - 3) Mounting: Surface mounted.
 - 4) Color: Green.
- b. Site Bench, Without Back
 - 1) Size: 6' bench.
 - 2) Style: Bench Without Back.
- c. Mounting: Surface mounted.
 - 1) Color: Green.

C. Site Picnic Tables, Cluster Seating

- 1. Manufacturer / Product: Columbia Cascade, *2056-8484-P Parkway Integral Table and Seats and 2057-8484-ADA-P Parkway Accessible Integral Table with Three Seats.*
- 2. Specifications:
 - a. Site Picnic Table, no accessibility:
 - 1) Size: 6'-11 1/2" x 6'-11 1/2".
 - 2) Mounting: Pedestal Mount.
 - 3) Finish: Black Powder Coating.
 - b. Site Picnic Table, accessibility:
 - 1) Size: 5'-1" x 4'-3 3/4".
 - 2) Mounting: Pedestal Mount.
 - 3) Finish: Black Powder Coating.

D. Site Picnic Tables, Bench Style

- 1. Manufacturer / Product: Wabash Valley, *6' Table #SG106D and 8' ADA Table #SG115D.*
- 2. Specifications:

- a. Site Picnic Table, no accessibility
 - 1) Size: 6' Table.
 - 2) MountingFree Standing.
 - 3) Color: Green.
 - b. Site Picnic Table, accessibility
 - 1) Size: 8' ADA Table.
 - 2) MountingFree Standing.
 - 3) Color: Green.
- E. Site Bicycle Racks
- 1. Manufacturer / Product: DuMor, Inc., *Bike Racks 125-30*.
 - 2. Specifications:
 - a. Capacity: 7 bicycles.
 - b. Size: 62 1/2" long.
 - c. Mounting: Surface Mounted.
- F. Water Pump
- 1. Manufacturer / Product: Bison Pumps, *Cadrom Creek Water Pump, Pump-n-Play Standard Playground Water Pump with Hand Pump and Water Tank* is the basis of design and the standard of quality, function, performance and appearance required for this project.
 - a. Products by other manufacturers may be acceptable, subject to their ability to meet or exceed this standard and provide products conforming with the requirements of the Drawings and this Specification.
 - b. Substitutions: Refer to Section 01 6000 for substitution procedures and requirements. Proposed substitutions must match specified product performance and colors.
 - 2. Specifications:
 - a. Construction: Stainless Steel.
 - b. Size: 53-1/2" tall from the base of the tank to the top of the handle, 40-1/8" from base of tank to bottom of spigot.

c. Connection: 3/4" pressurized water line.

G. Water Fountain

1. Manufacturer / Product: Most Dependable Fountains, Inc., *350 SMSS Pet Fountain*.
2. Specifications:
 - a. Color: Green.
 - b. Configuration: Pet Fountain

2.02 CONTRACTOR-FURNISHED / CONTRACTOR-INSTALLED (CFCI) SITE FURNISHINGS

A. Pet Waste Receptacle

1. Manufacturer / Product: Pet Waste Eliminator, *Superior Pet Waste Eliminator Station (SKU: E3)* is the basis of design and the standard of quality, function, performance and appearance required for this project.
 - a. Products by other manufacturers may be acceptable, subject to their ability to meet or exceed this standard and provide products conforming with the requirements of the Drawings and this Specification.
 - b. Substitutions: Refer to Section 01 6000 for substitution procedures and requirements. Proposed substitutions must match specified product performance and colors.
2. Specifications:
 - a. Color: Green.

B. Precast Cement Concrete Pump Track

1. Manufacturers / Products: Parkitect; Version 3.5 Modular Cement Concrete Pump Track, layout and configuration as shown on the Contract Documents, is the basis of design and the standard of quality, function, performance, and details required for this project.
 - a. Products by other manufacturers may be acceptable, subject to their ability to meet or exceed this standard and provide products conforming to the requirements of the Drawings and Specifications.
 - b. Substitutions: Refer to Section 01 6000 for substitution procedures and requirements.
2. Specifications:

- a. Track Width = 1,710 mm
- b. Precast modules shall have rounded edges to prevent chipping.
 - 1) Minimum edge radius = 45 mm.



- c. Precast reinforced C35/45 concrete with sandblasted and Sika impregnated riding surface.



C. Non-Slip Treads

1. Manufacturer / Product: HandiTreads, *Non-Slip Aluminum Treads* is the basis of design and the standard of quality, function, performance and appearance required for this project.
 - a. Products by other manufacturers may be acceptable, subject to their ability to meet or exceed this standard and provide products conforming with the requirements of the Drawings and this Specification.
 - b. Substitutions: Refer to Section 01 6000 for substitution procedures and requirements. Proposed substitutions must match specified product performance and colors.
2. Specifications:
 - a. Material: Aluminum
 - b. Finish: Black Powder Coating
 - c. Dimensions: 48" long, 3.75" wide
 - d. Attachment Type: Mechanical anchors
 - e. Code Compliance: ADA Compliant

D. Park Map

1. Map Panel
 - a. Manufacturer / Product: Fossil Industries, Inc., *CHPL Graphic Panel* is the basis of design and the standard of quality, function, performance and appearance required for this project.
 - 1) Products by other manufacturers may be acceptable, subject to their ability to meet or exceed this standard and provide products conforming with the requirements of the Drawings and this Specification.

- 2) Substitutions: Refer to Section 01 6000 for substitution procedures and requirements. Proposed substitutions must match specified product performance and colors.

b. Specifications:

- 1) Artwork as provided in Contract Documents.
- 2) Graphics panels must be LEED, GREENGUARD and FSC Certified and be manufactured as Custom High Pressure Laminate (CHPL). CHPL graphic sign material is composed of several layers of phenolic resin impregnated kraft filler paper, a digitally imaged graphic, a layer of melamine resin, surfaced by a layer of translucent exterior UV / graffiti overlay protection. The entire panel, including exterior overlay, must be bonded under heat and extreme pressure to form a composite panel. The finish must be smoothly textured with reflectivity of 30 + or – 5 gloss units.
- 3) The CHPL graphics must be warranted for a minimum of 10 years against fading, de-lamination and weather deterioration. There should be no warranty requirements for an annual application of water sealant, no exclusions for panels used in “extreme temperatures” and no clause that warranties can be denied due to “improper maintenance”.
- 4) Panels must be able to be cleaned with any solvent and not restrict use of products containing lacquer thinner or acetone.
- 5) All cutting and finishing to be done using a CNC router.
- 6) Graphics must be made using 12-Color High Definition printing technology.
- 7) Vendor shall provide a sample from a supplied file to confirm quality.
- 8) Panels must be entirely made in the U.S.A.
- 9) Panel shall be 24" x 36" and a minimum of 1/2" in thickness.



2. Panel Support

a. Map Panel

- 1) Manufacturer / Product: Fossil Industries, Inc., *SPG1212 Pedestal* is the basis of design and the standard of quality, function, performance and appearance required for this project.
 - a) Products by other manufacturers may be acceptable, subject to their ability to meet or exceed this standard and provide products conforming with the requirements of the Drawings and this Specification.
 - b) Substitutions: Refer to Section 01 6000 for substitution procedures and requirements. Proposed substitutions must match specified product performance and colors.
- 2) Specifications:
 - a) Type: Angled Mount
 - b) Mounting: Ground Mount
 - c) Mounting Plate Size: 12" x 12"
 - d) Color: Black

E. Fasteners

1. Anchor bolts, fasteners, fittings and hardware: shall be stainless steel, or Manufacturer's standard, corrosion-resistant-coated or non-corrodible materials; commercial quality, tamperproof, vandal and theft-resistant, concealed, recessed and capped or plugged.
2. Separation from concrete pavement surface with neoprene or stainless steel bottom plate.

PART 3 EXECUTION

3.01 COORDINATION

- A. Review, coordinate and accommodate work of other sections that interface with, affect or are affected by the work of this section so as to facilitate the execution of the overall Work of this project in a coordinated and efficient manner.

3.02 EXAMINATION – GENERAL

- A. Examine the areas and conditions where site furnishings are to be installed and notify the Contractor of conditions detrimental to the proper and timely installation and completion of the work.

- B. Do not proceed with the work until unsatisfactory conditions have been corrected by the Contractor in a manner acceptable and to the satisfaction of the Engineer and Owner.

3.03 INSTALLATION – GENERAL

- A. Refer to applicable details and plans for layout and installation.
- B. Install rigid, plumb and true to lines and levels shown. Stake out all elements called for in this section for approval by Engineer or authorized representative. All work shall be of the highest quality.
- C. Unless otherwise indicated, install all equipment specified by name / manufacturer as per manufacturer's recommendations.

3.04 INSTALLATION – TRASH / RECYCLING RECEPTACLES

- A. Install trash / recycling receptacles level, plumb and in proper alignment, bolt securely to concrete walk with stainless steel anchor bolts, in accordance with manufacturer's installation instructions.

3.05 INSTALLATION – PET WASTE RECEPTACLES

- A. Install pet waste receptacles level, plumb and in proper alignment in accordance with manufacturer's installation instructions.

3.06 INSTALLATION – SITE BENCHES

- A. Install site benches level, plumb and in proper alignment, bolt securely to concrete walk with stainless steel anchor bolts, in accordance with manufacturer's installation instructions.

3.07 INSTALLATION – SITE PICNIC TABLES, CLUSTER SEATING

- A. Install tables and seating level, plumb and in proper alignment, bolt securely to concrete walk with stainless steel anchor bolts, in accordance with manufacturer's installation instructions.

3.08 INSTALLATION – SITE PICNIC TABLES, BENCH STYLE

- A. Install tables and seating at locations shown on the Drawings. Install using provided mounting kits in strict accordance with the manufacturer's written directions.

3.09 INSTALLATION – SITE BICYCLE RACKS

- A. Install per manufacturer's installation instructions. Installation shall be plumb and true.

3.10 INSTALLATION – PLAYGROUND WATER PUMP

- A. Playground water pump shall be installed as indicated on approved submittals as recommended and in strict accordance with manufacturer's written directions and as indicated on the Drawings and specified herein.

3.11 INSTALLATION – PRECAST CEMENT CONCRETE PUMP TRACK

- A. Precast cement concrete pump track shall be installed as indicated on approved submittals as recommended and in strict accordance with manufacturer's written directions and as indicated on the Drawings and specified herein.



3.12 INSTALLATION - NON-SLIP TREADS

- A. Install per manufacturer's installation instructions.

3.13 INSTALLATION - PARK SIGN

- A. Install per manufacturer's installation instructions.

3.14 FIELD QUALITY CONTROL

- A. Contractor Quality Control: Employ / assign quality control personnel to monitor the work of this section for conformance to the requirements of the Contract Documents and to good construction practices.
 - 1. Contractor is solely responsible for managing and controlling the quality of the work and conformance with the requirements of the Contract Documents.

END OF SECTION

SECTION 32 9200
TURF AND GRASSES

PART 1 GENERAL

1.01 RELATED DOCUMENTS

- A. Drawings and general provisions of the Contract, including General Conditions, Supplementary Conditions and Divisions 00 and 01 Specification Sections, apply to work of this section.

1.02 SECTION INCLUDES

- A. Hydroseeding.

1.03 SCOPE OF WORK FOR HYDROSEEDING

- A. Hydroseeding shall occur on all areas shown and those areas outside clearing limits disturbed by construction.

1.04 HYDROSEEDING SEASON

- A. The best soil temperature for seed germination is 58 degrees Fahrenheit. Hydroseeding shall be done in the fall between September 30 and October 30 or in the spring between March 30 through April 30 for areas without automatic irrigation. Seek approval from Landscape Architect prior to seeding/hydroseeding for installations outside the above planting window.
- B. In lawn areas receiving automatic irrigation, hydroseeding may occur between April 15 and October 15.
- C. Actual hydroseeding shall be performed only when weather and soil conditions are suitable and in accordance with locally accepted practice and / or approved by the Landscape Architect. Hydroseeding shall not be attempted when wind velocities would prevent uniform application or when winds would drift the material outside the areas to be seeded.

1.05 REFERENCES

- A. References shall be the edition current as of the date of the Contract Documents.
- B. AOSA - Association of Official Seed Analysts.
- C. ASTM D5268 - Standard Specification for Topsoil Used for Landscaping and Construction Purposes.
- D. DOE - Department of Ecology.

- E. WAC 296-96 - Safety Regulations and Fees for All Elevators, Dumbwaiters, Escalators and other Conveyances.

1.06 SUBMITTALS

- A. Refer to Section 01 3300 for submittal procedures.
- B. Product Data: For each type of product indicated.
- C. Certification of Grass Seed: From seed vendor for each grass-seed monostand or mixture stating the botanical and common name, percentage by weight of each species and variety, and percentage of purity, germination, and weed seed. Include the year of production and date of packaging.
- D. Product Certificates: For soil amendments and fertilizers, from manufacturer.
- E. Material Test Reports: For standardized ASTM D5268 imported or manufactured topsoil.

1.07 DEFINITIONS

- A. Finish Grade: Elevation of finished surface of planting soil.
- B. Manufactured Topsoil: Soil produced off-site by homogeneously blending mineral soils or sand with stabilized organic soil amendments to produce topsoil.
- C. Pesticide: A substance or mixture intended for preventing, destroying, repelling, or mitigating a pest. This includes insecticides, miticides, herbicides, fungicides, rodenticides, and molluscicides. It also includes substances or mixtures intended for use as a plant regulator, defoliant, or desiccant.
- D. Pests: Living organisms that occur where they are not desired or that cause damage to plants, animals or people. These include insects, mites, grubs, mollusks (snails and slugs), rodents (gophers, moles, and mice), unwanted plants (weeds), fungi, bacteria, and viruses.
- E. Planting Soil: Standardized topsoil; existing, native surface topsoil; existing, in-place surface soil; imported topsoil; or manufactured topsoil that is modified with soil amendments and perhaps fertilizers to produce a soil mixture best for plant growth.
- F. Subgrade: Surface or elevation of subsoil remaining after excavation is complete, or top surface of a fill or backfill before planting soil is placed.
- G. Subsoil: Soil beneath the topsoil layer of the soil profile and typified by the lack of organic matter and soil organisms.
- H. Surface Soil: Soil that is present at the top layer of the existing soil profile at the Project site. In undisturbed areas, the surface soil is typically topsoil, but in disturbed areas such as urban environments, the surface soil can be subsoil.

1.08 QUALITY ASSURANCE

- A. Installer Qualifications: A qualified landscape installer whose work has resulted in successful turf establishment.
 - 1. Experience: Five (5) years of experience in hydroseeding.
 - 2. Installer's Field Supervision: Require Installer to maintain an experienced full-time supervisor on Project site when work is in progress.
 - 3. Pesticide Applicator: State licensed, commercial.

1.09 PROJECT CONDITIONS

- A. Field Measurements: Verify actual grade elevations, service and utility locations, irrigation system components, and dimensions of plantings and construction contiguous with new plantings by field measurements before proceeding with planting work.
- B. Weather Limitations: Proceed with planting only when existing and forecasted weather conditions permit planting to be performed when beneficial and optimum results may be obtained. Apply products during favorable weather conditions according to manufacturer's written instructions.

1.10 DELIVERY, STORAGE AND HANDLING

- A. Seed and Other Packaged Materials: Deliver packaged materials in original, unopened containers showing weight, certified analysis, name and address of manufacturer, and indication of conformance with state and federal laws, as applicable.
- B. Bulk Materials:
 - 1. Do not dump or store bulk materials near structures, utilities, walkways and pavements, or on existing turf areas or plants.
 - 2. Provide erosion-control measures to prevent erosion or displacement of bulk materials, discharge of soil-bearing water runoff, and airborne dust reaching adjacent properties, water conveyance systems, or walkways.
 - 3. Accompany each delivery of bulk fertilizers and soil amendments with appropriate certificates.

1.11 12 MONTH MAINTENANCE SERVICE

- A. Initial Maintenance Service for Turf and Grass Establishment: Provide maintenance by skilled employees of landscape Installer. Maintain as required in Part 3. Begin maintenance immediately after turf and grasses are hydroseeded and continue until turf and grasses are acceptably healthy and well established but for not less than maintenance period below.

1. Maintenance Period: 12 months from date of Substantial Completion.

1.12 GUARANTEE

- A. The guarantee of all lawn areas under this contract shall be for one full year from the completion date of final acceptance. At the conclusion of the guarantee period, the Landscape Architect will make another inspection to determine the condition of lawns and meadows. All areas of lawn and meadows not in a healthy growing condition, as determined by the Landscape Architect, shall be reseeded with seed as originally planted. Such replacement shall be made in the same manner as specified from the original plantings, and at no extra cost to the Owner. The guarantee on lawns and meadows shall be limited to one replacement. The Contractor is not responsible for vandalism.

1.13 DOMESTIC PRODUCTS

- A. Products shall comply with the requirements of the “Build America, Buy America Act”, term effective as of January 13, 2023; refer also to RCO Grant Agreements included in the appendices of the Project Manual for additional information.

PART 2 PRODUCTS

2.01 SEED

- A. Erosion Control Seed Mix (Percentage by Weight)

	% Weight	% Purity	% Germination
Chewings or annual bluegrass <i>Festuca rubra var. commutate</i> or <i>Poa anna</i>	40	98	90
Perennial rye <i>Lolium perenne</i>	50	98	90
Redtop or colonial bentgrass <i>Agrostis alba</i> or <i>Agrostis tenuis</i>	5	92	85
White Dutch Clover <i>Trifolium repens</i>	5	98	90

1. The above mixture shall be applied at the rate of 120 pounds per acre.
2. Locations: erosion control at many locations throughout the site. See Landscape Plans.

- B. Lawn Seed Mix: Sunmark Seeds DOT Multipurpose Mixture (Percentage by Weight) or approved substitute.

Blazer 4 Perennial Rye	30%
Express II Perennial Rye	30%
Windward Chewings Fescue	20%

Garnet Creeping Red Fescue 20%

1. The above mixture shall be applied at the rate of 300 pounds per acre.
2. Locations: irrigated lawns at south and north ends of park. See Landscape Plans.

C. Native Grassland Mix: Sunmark Seeds Native Grasslands Mix (Percentage by Weight) or approved substitute.

Blue Wildrye 40%
California Brome 40%
Native Red Fescue 15%
Tufted Hairgrass 5%

1. The above mixture shall be applied at the rate of 44 pounds per acre.
2. Location: grassland area. See Landscape Plans L-104 and L-104.1.

D. Shoreline – Low Grow Native Mix:

1. Location: see Landscape Plans.
2. The Native Water Quality Mix is to be applied to low growing shoreline areas prior to application of the Wetland Prairie Mix. Application of Native Water Quality Mix is to be given a head start by approximately one week prior to applying the Wetland Prairie Mix

3. Sunmark Seeds Native Water Quality Mix (Percentage by Weight)

Blue Wildrye 46%
Native Red Fescue 38%
Tufted Hairgrass 12%
Western Mannagrass 2%
American Sloughgrass 2%

4. Application rate for Water Quality Mix is 22 pounds per acre where it is to be overseeded with Wetland Prairie Mix.

5. Sunmark Seeds: Wetland Prairie Mix (Percentage by Weight)

Meadow Barley 25%
California Oatgrass 25%
Western Mannagrass 15%
Tufted Hairgrass 7%
Western Blue-Eyed Grass 6%
Small Camas 5%
Native Red Fescue 5%
Slough Sedge 5%

American Sloughgrass	3%
Common Spikerush	2%
Aspen Fleabane	2%

a. Application rate for Wetland Prairie Mix is 44 pounds per acre.

E. Meadow - Seed Mix: Sunmark Seeds Native Meadow Mix (Percentage by Weight)

California Brome	50%
Sheep Fescue	18%
California Poppy	8%
Indian Blanket	5.5%
Common Yarrow	5%
Tufted Hairgrass	5%
Miniature Lupine	4%
Prairie Junegrass	3.5%
Dwarf Spurred Snapdragon	1%

1. The above mixture shall be applied at the rate of 44 pounds per acre.

2. Location: meadow areas. See Landscape Plans.

F. Pump Track Area: Sunmark Seeds Supreme Plus Mix (Percentage by Weight)

Crossfire 3 Turf Type Tall Fescue	40%
Turfnet Perennial Ryegrass	30%
Creeping Red Fescue	25%
Highland Colonial Bentgrass	5%

1. The above mixture shall be applied at the rate of 174 pounds per acre.

2. Location: around the pump track. See Landscape Plans.

G. Trail Buffer – Native Seed Mix: Sunmark Seeds Streambank Plus Mix (Percentage by Weight)

Native Red Fescue	50%
California Brome	20%
Blue Wildrye	20%
Streambank Lupine	10%

1. The above mixture shall be applied at the rate of 66 pounds per acre.

2. Location: shoreline areas between native shrub planting and trail. See Landscape Plans.

H. Dog Park Swale: Sunmark Seeds Shade Bio-Filter Seed Mix (Percentage by Weight)



Sealink Slender Creeping Red Fescue	50%
Hard Fescue	34%
Sabre Poa Trivialis	10%
Fults Dwarf Alkaligrass	4%
Creeping Bentgrass	2%

1. The above mixture shall be applied at the rate of 130 pounds per acre.
 2. Location: dog park swale. See Landscape Plans.
- I. Analysis: A complete analysis of the seed shall be submitted by the Contractor prior to planting, including the percent of pure seed, germination, other crop seed, inert and weed seed, and the germination test date to the Landscape Architect. All crop seed in excess of one percent must be itemized.
 - J. Seed Law: All seeds shall conform to the requirements of the Washington State Seed Law and, where applicable, the Federal Seed Act.
 - K. Noxious Weed Seed: All seed shall be free of seeds listed as primary noxious by the Washington State Seed Law. Seeds shall not contain seeds of weeds listed as secondary noxious by the Washington State Seed Law, singly or collectively in excess of the labeling tolerance specified by the Washington State Seed Law.
 - L. Rejection: When seeds furnished under this specification fail to meet the requirements within tolerance as provided by the Washington State Seed Law, the lot shall be rejected.
 - M. Preparation for Delivery: Seeds shall be packed in clean, dry, solid containers of uniform weight. Seed shall be labeled as required by law.

2.02 HYDRO MULCH

- A. Hydro Mulch: Wood-cellulose fiber mulch for use with hydraulic application of grass seed and fertilizer shall consist of specially prepared wood-cellulose fiber processed to contain no growth - no germination - inhibiting factors and dyed an appropriate color to facilitate visual metering of application of materials. Silva-fiber or approved applied at a minimum rate of 2000 lbs. / acre.

2.03 SOIL STABILIZER / TACKIFIER

- A. Soil Stabilizer / Tackifier: Soil stabilizer shall be capable of penetrating soil surface and binding soil particles; shall contain an adhesive to hold seed and wood-cellulose fibers together and bond them to the soil; and shall be made from naturally occurring and biodegradable materials.
- B. Use on all sloped areas steeper than 5:1 at manufacturer's suggested rate.

2.04 HYDROSEED MIX ORGANIC AMENDMENT

- A. Hydroseed mix organic amendment shall be a total organic product developed from byproducts of the manufacture of various antibiotics, enzymes, and proteins. This amendment shall be applied to provide a slow release of organically bound nutrients including nitrogen, potassium, and phosphorus. They shall have a minimum analysis (nutrient ratio) of 7-2-3 (N-P-K), with a pH between 5.3 and 6.0. The product shall be sterilized and weed-free. The product shall be supplied in dried, granulated form in 55-pound bags with the dried weight, contents, and chemical analysis clearly marked on each bag.

PART 3 EXECUTION

3.01 COORDINATION

- A. Review, coordinate and accommodate work of other sections that interface with, affect or are affected by the work of this section so as to facilitate the execution of the overall Work of this project in a coordinated and efficient manner.

3.02 EXAMINATION

- A. Examine areas to be planted for compliance with requirements and other conditions affecting performance.
 - 1. Verify that no foreign or deleterious material or liquid such as paint, paint washout, concrete slurry, concrete layers or chunks, cement, plaster, oils, gasoline, diesel fuel, paint thinner, turpentine, tar, roofing compound, or acid has been deposited in soil within a planting area.
 - 2. Do not mix or place soils and soil amendments in frozen, wet, or muddy conditions.
 - 3. Suspend soil spreading, grading, and tilling operations during periods of excessive soil moisture until the moisture content reaches acceptable levels to attain the required results.
 - 4. Uniformly moisten excessively dry soil that is not workable and which is too dusty.
- B. Proceed with installation only after unsatisfactory conditions have been corrected.
- C. If contamination by foreign or deleterious material or liquid is present in soil within a planting area, remove the soil and contamination as directed by the Landscape Architect and replace with new planting soil.

3.03 GENERAL PREPARATION

- A. Protect structures, utilities, sidewalks, pavements, and other facilities, trees, shrubs, and plantings from damage caused by planting operations.

1. Protect adjacent and adjoining areas from hydroseeding and hydro mulching overspray.
 2. Protect grade stakes set by others until directed to remove them.
- B. Install erosion-control measures to prevent erosion or displacement of soils and discharge of soil-bearing water runoff or airborne dust to adjacent properties and walkways.

3.04 PREPARATION FOR HYDROSEEDING

- A. Contractor shall fine grade all areas prior to hydroseeding. Verify with Landscape Architect prior to seeding. Refer to Section 32 9300 for those areas to receive additional preparation.
- B. Remove all stones and debris over 1-inch in diameter.
- C. Cultivate ground surfaces and grade smooth.
- D. Compact lightly to eliminate all soft spots, hills and valleys.
- E. Finish grade shall be 1/2-inches below all adjoining curbs, roads, walks and other paved surfaces.

3.05 HYDROSEEDING

- A. Hydroseeding: Mix specified seed, fertilizer, and fiber mulch in water, using equipment specifically designed for hydroseed application. Continue mixing until uniformly blended into homogeneous slurry suitable for hydraulic application.
1. Mix slurry with fiber-mulch, or manufacturer's recommended tackifier.
 2. Apply slurry uniformly to all areas to be seeded in a one-step process. Apply slurry at a rate so that mulch component is deposited at not less than 1500-lb / acre and seed component is deposited at not less than the specified seed-sowing rate.
 3. Seed shall not be broadcast during windy weather.
 4. Hydroseeding operator shall remove all seed mulch in its entirety from adjoining paving, structures and plants.

3.06 CLEAN UP AND PROTECTION

- A. Promptly remove soil and debris created by turf work from paved areas. Clean wheels of vehicles before leaving site to avoid tracking soil onto roads, walks, or other paved areas.
- B. Erect temporary fencing or barricades and warning signs as required to protect newly planted areas from traffic. Maintain fencing and barricades throughout initial maintenance period and remove after plantings are established.

- C. Remove non-degradable erosion-control measures after grass establishment
- D. A general clean-up shall be made immediately after and as part of all work done in the area. The clean-up shall include the entire area under this contract. Adjacent areas shall be cleaned to the extent that the work done under the contract may scatter litter. Such clean-up shall include pick-up and removal from the contract area of all clippings, trimmings, leaves and all the other litter and debris originating from any source whatsoever.

3.07 INITIAL MAINTENANCE

- A. It shall be the Contractor's responsibility to continuously and vigorously maintain all the meadow and grass areas of this contract from time of installation until 60 days after substantial completion
- B. Provide temporary irrigation as needed to areas not covered by permanent irrigation system. Temporary irrigation provisions shall be sufficient to water all areas at least once daily. Watering methods shall be designed to minimize overspray on to paved surfaces or established landscape areas. Design of temporary irrigation shall be subject to approval by the Landscape Architect.
- C. Irrigated Lawn Areas:
 - 1. Maintain by watering, weekly mowing (remove all clippings) continuous weeding, reseeding, fertilizing, herbicide treatment, rolling and top dressing, and other necessary operations to establish and maintain an even, dark green, deep rooted, thick and vigorous stand of grass. Temporarily water any areas that are not irrigated, until establishment.
 - 2. Replace any seeded areas which fail to show vigorous growth. Fill and seed / re-sod areas which settle, as specified. At the end of the maintenance period and prior to acceptance, the seeded areas shall be a flourishing, dense, vigorous, uniform, deeply rooted thick stand of specified grass with no bare spots and no weeds whatsoever.
 - 3. There shall be no foot or vehicle traffic on the seeded / sodded area whatsoever. Install a temporary 4' height high visibility fencing around lawn areas until fully established. Maintain barriers around seeded / sodded areas until established, then remove from site.
- D. All other seeded areas:
 - 1. Maintain by watering, reseeding, and other necessary operations to establish and maintain an even, deep rooted, thick and vigorous cover with species in seed mix. Temporarily water any areas that are not irrigated, until establishment.

2. Replace any seeded areas which fail to show vigorous growth. Fill and seed areas which settle, as specified. At the end of the maintenance period and prior to acceptance, the seeded areas shall be a flourishing, dense, vigorous, uniform, deeply rooted thick stand of specified species with no bare spots and no weeds whatsoever.
3. There shall be no foot or vehicle traffic on the seeded area whatsoever. Install a temporary 4' height high visibility fencing around seeded areas until fully established. Maintain barriers around seeded areas until established, then remove from site.
4. Refer to specification section 32 0190 for initial maintenance of all other seeded areas.

3.08 FIELD QUALITY CONTROL

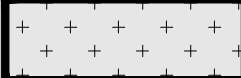

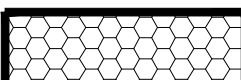
- A. Contractor Quality Control: Employ / assign quality control personnel to monitor the work of this section for conformance to the requirements of the Contract Documents and to good construction practices.
 1. Contractor is solely responsible for managing and controlling the quality of the work and conformance with the requirements of the Contract Documents.

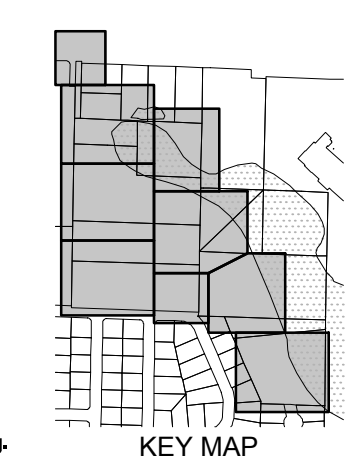
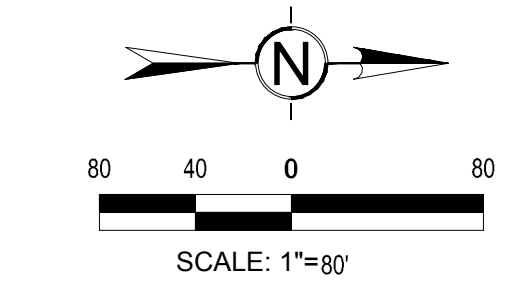
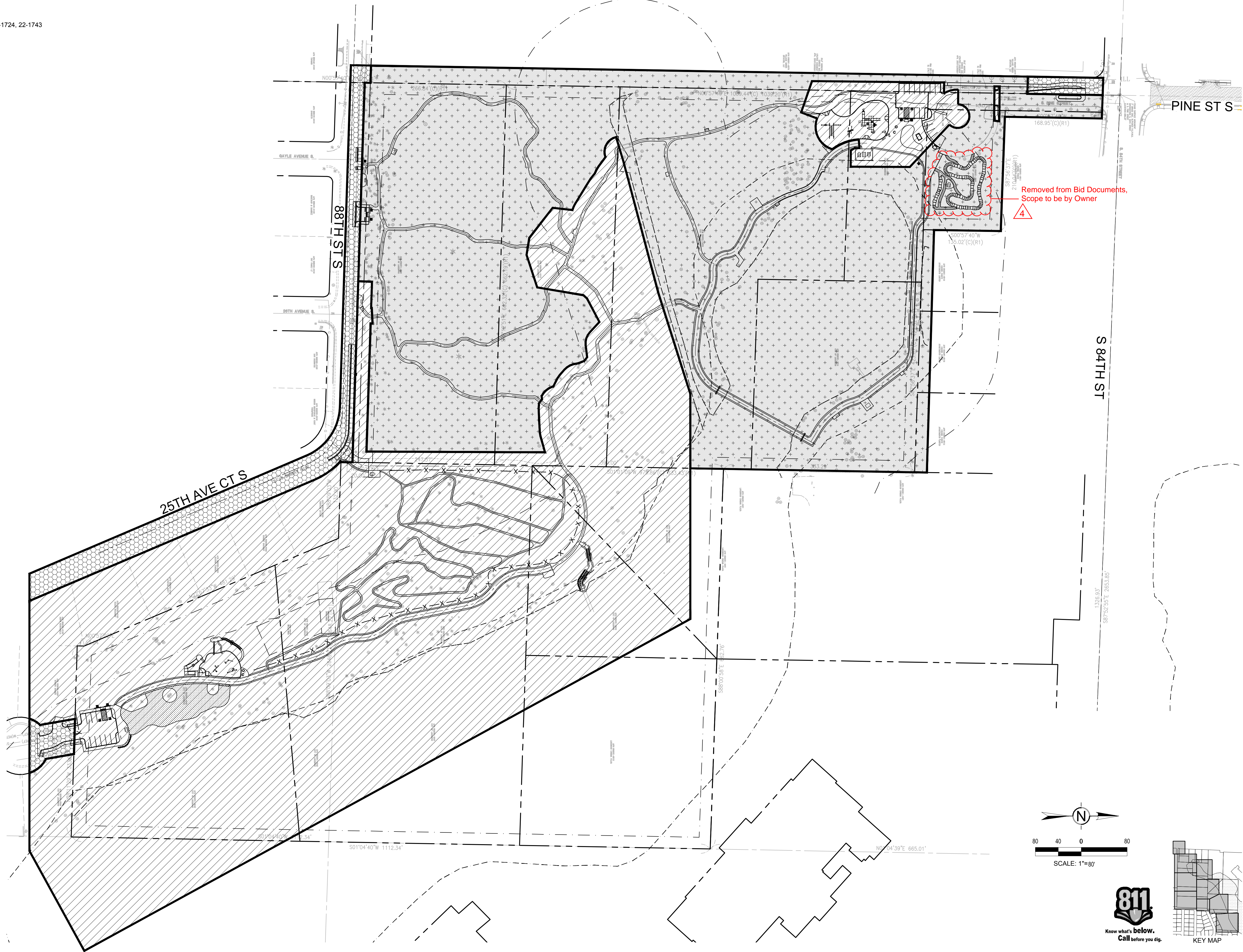
3.09 WARRANTY AND REPLACEMENT

- A. All seed areas must have a relatively uniform stand of grass or other seeded mixtures as specified with no bare spots over 6 inches square at the time of Substantial Completion. Reseed at the original rate and fertilize at the rates for all blended materials. All areas failing to vigorously establish within 90 days after germination or one growing season (whichever is longest), shall be redone at the contractor's expense.
- B. Lawn Establishment: Acceptance of lawn requires 3 mowing cycles with establishment to minimum 3" height and coverage of all areas to be approved by City Representative.

END OF SECTION

BID SCHEDULE LEGEND

-  SCHEDULE A
GRANT NUMBERS: 19-1740, 20-1761, 20-1763
-  SCHEDULE B
GRANT NUMBERS: 22-1720, 22-1724, 22-1743
-  SCHEDULE C
CITY FUNDS



DATE PLOTTED: 10/25/24 9:57:05 AM FILENAME: 21167C-002.DWG BY: ---



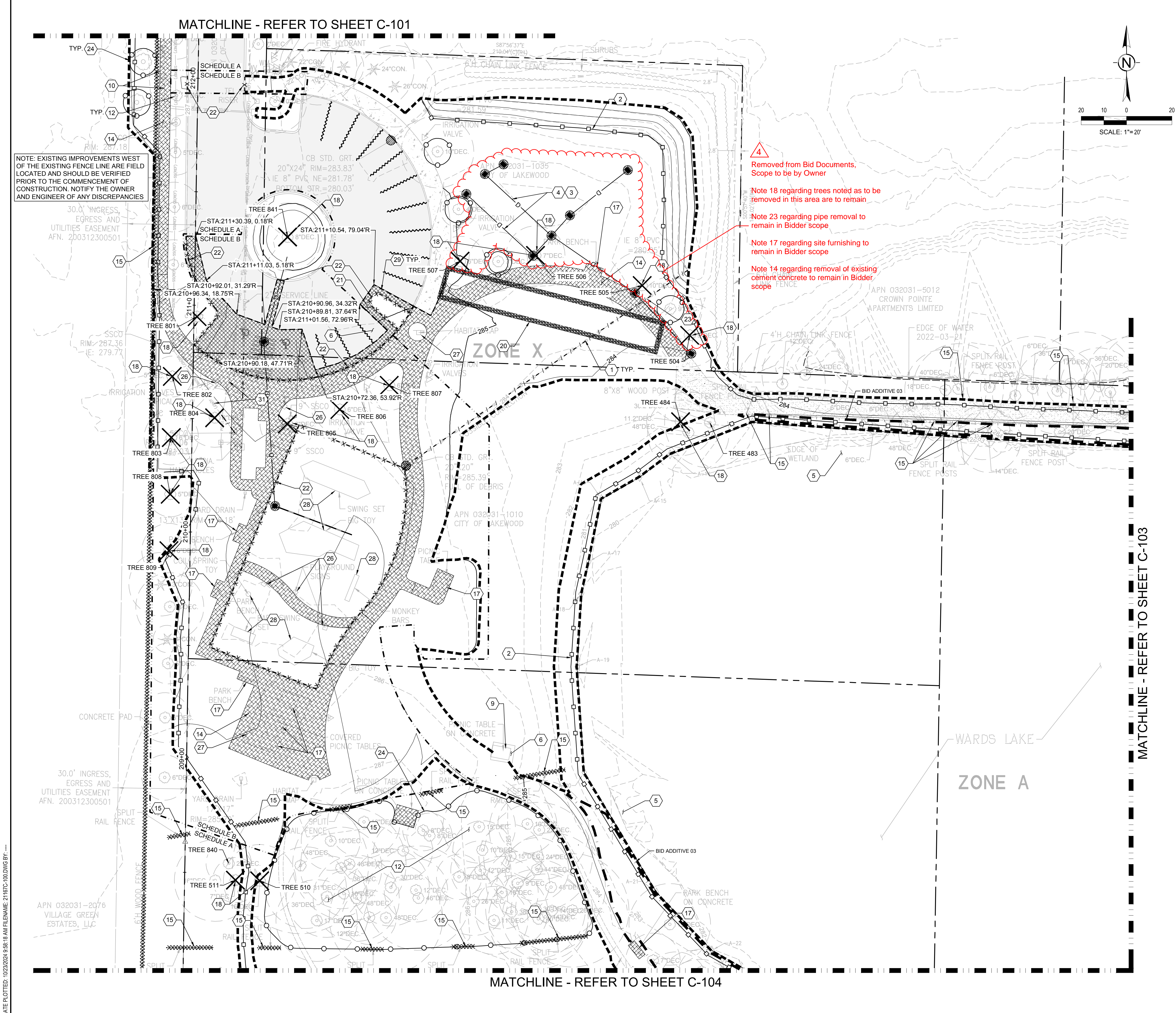
PROJECT:
PHASE 1 & 2 IMPROVEMENTS
WARDS LAKE PARK
2716 84TH ST CT S
LAKEWOOD, WA 98499

REVISIONS

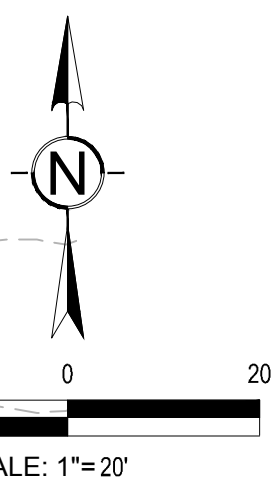
▲	ADDENDUM 4, 11.19.2024

DATE: 10.29.24
BCRA NO: 21167
DRAWN BY: RJB **DESIGNED BY:** BS
REVIEWED BY: ACC
SHEET TITLE: SCHEDULE OF VALUES PLAN

IF SHEET MEASURES LESS THAN 24"X36", IT IS A REDUCED PRINT. REDUCE SCALE ACCORDINGLY



MATCHLINE - REFER TO SHEET C-101



NOTE: EXISTING IMPROVEMENTS WEST OF THE EXISTING FENCE LINE ARE FIELD LOCATED AND SHOULD BE VERIFIED PRIOR TO THE COMMENCEMENT OF CONSTRUCTION. NOTIFY THE OWNER AND ENGINEER OF ANY DISCREPANCIES

Removed from Bid Documents, Scope to be by Owner

Note 18 regarding trees noted as to be removed in this area are to remain

Note 23 regarding pipe removal to remain in Bidder scope

Note 17 regarding site furnishing to remain in Bidder scope

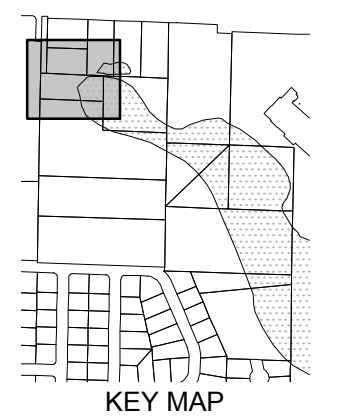
Note 14 regarding removal of existing cement concrete to remain in Bidder scope

DEMOLITION AND TESC NOTES

- 1 INLET PROTECTION PER DETAIL (C-307)
- 2 SILT FENCE PER WSDOT STANDARD PLAN I-30.15-02 (C-307)
- 3 PROPOSED STORM SYSTEM SHOWN FOR REFERENCE ONLY
- 4 PROTECT PROPOSED INFILTRATION FACILITY FROM UNTREATED CONSTRUCTION STORMWATER RUNOFF
- 5 PROTECT EXISTING WETLAND FROM UNTREATED CONSTRUCTION STORMWATER RUNOFF
- 6 PROTECT EXISTING PAVEMENT
- 7 PROTECT EXISTING DOCK
- 8 PROTECT EXISTING PEDESTRIAN BRIDGE
- 9 PROTECT EXISTING SITE FURNISHING
- 10 PROTECT EXISTING UNDERGROUND UTILITY
- 11 PROTECT EXISTING UTILITY STRUCTURE AND ASSOCIATED LINES
- 12 PROTECT EXISTING VEGETATION
- 13 PROTECT EXISTING WALL
- 14 REMOVE EXISTING CEMENT CONCRETE
- 15 REMOVE EXISTING FENCE
- 16 REMOVE EXISTING MONUMENT SIGN
- 17 REMOVE EXISTING SITE FURNISHING, STOCKPILE FOR REUSE AS SHOWN ON THE SITE AND SURFACING PLAN
- 18 REMOVE EXISTING TREE
- 19 REMOVE EXISTING ROCKERY WALL
- 20 CONSTRUCTION EXIT PER DETAIL (C-307)
- 21 REMOVE EXISTING ASPHALT PAVEMENT
- 22 REMOVE EXISTING CURB
- 23 REMOVE EXISTING PIPE
- 24 TREE PROTECTION FENCING PER DETAIL (C-307)
- 25 REMOVE EXISTING COLUMN AND GATE
- 26 REMOVE EXISTING SIGN
- 27 REMOVE EXISTING STRUCTURE
- 28 REMOVE EXISTING PLAY EQUIPMENT
- 29 SAWCUT EXISTING ASPHALT FULL DEPTH OF PAVEMENT SECTION
- 30 REMOVE EXISTING MAILBOX
- 31 REMOVE EXISTING UTILITY, COORDINATE WITH UTILITY PURVEYOR
- 32 REMOVE EXISTING FIRE HYDRANT AFTER NEW FIRE HYDRANT IS INSTALLED AND FULLY OPERATIONAL

SOIL EROSION SCOPE NOTE:

THE EROSION CONTROL MEASURES SHOWN ON THE PLANS ARE THE ABSOLUTE MINIMUM MEASURES NECESSARY FOR THIS PROJECT. WEATHER CONDITIONS AND THE CONTRACTOR'S MEANS AND METHODS WILL NECESSARILY DICTATE ADDITIONAL EROSION CONTROL MEASURES BEYOND THOSE SHOWN ON THE PLANS. IT IS THE CONTRACTOR'S RESPONSIBILITY TO MEET ALL FEDERAL, STATE, AND LOCAL REGULATIONS RELATED TO CONSTRUCTION STORMWATER DISCHARGES.



PROJECT:
PHASE 1 & 2 IMPROVEMENTS
WARDS LAKE PARK
2716 84TH ST CT S
LAKEWOOD, WA 98499

REVISIONS:
▲ ADDENDUM 4, 11.19.2024

DATE: 10.29.24
BCRA NO: 21167
DRAWN BY: RJB DESIGNED BY: BS
REVIEWED BY: ACC
SHEET TITLE: DEMOLITION AND TESC PLAN

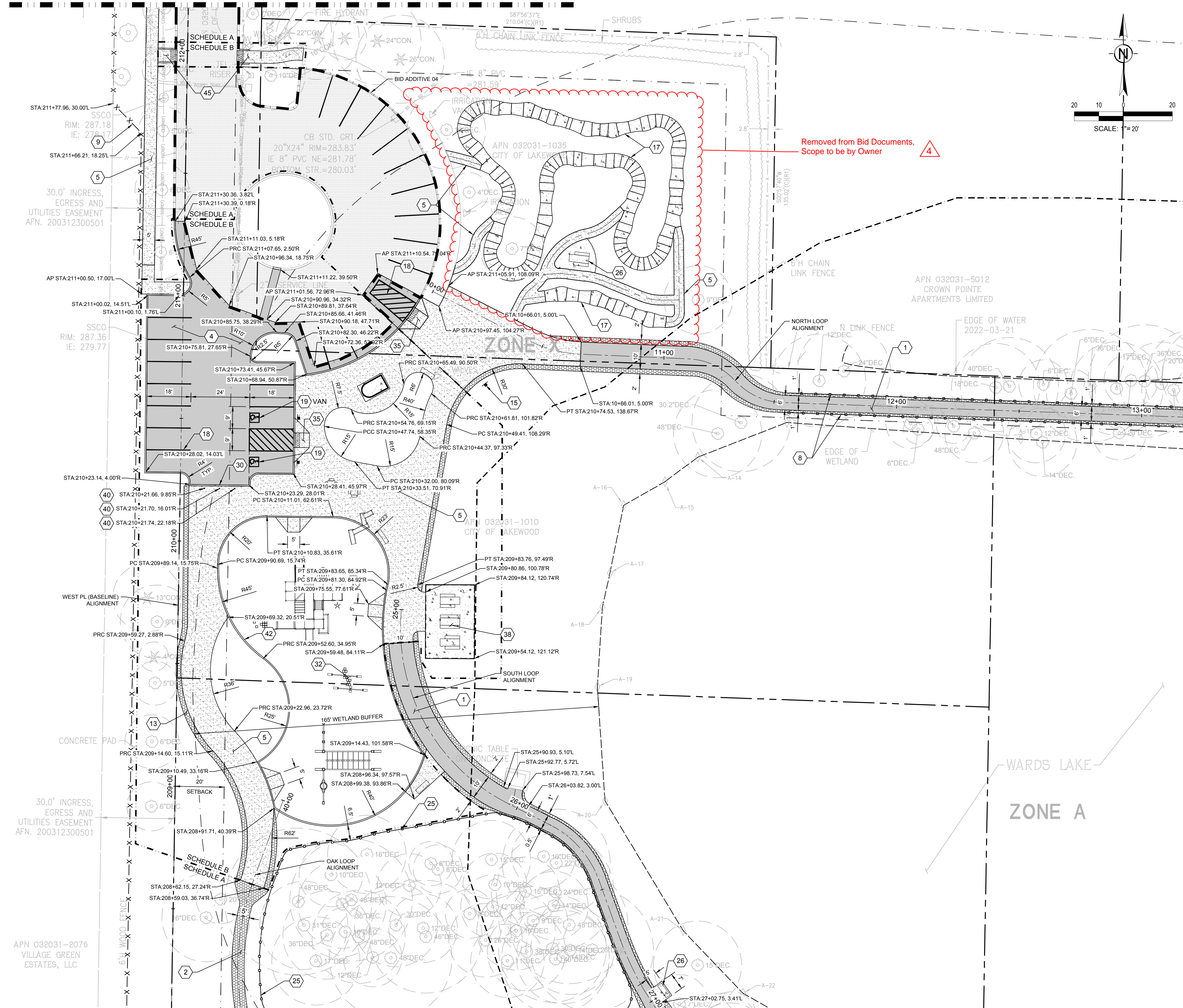


C-102

DATE PLOTTED: 10/25/2024 9:38:18 AM FILENAME: 21167C-100.DWG BY: ---

IF SHEET MEASURES LESS THAN 24"X36", IT IS A REDUCED PRINT. REDUCE SCALE ACCORDINGLY

MATCHLINE - REFER TO SHEET C-201

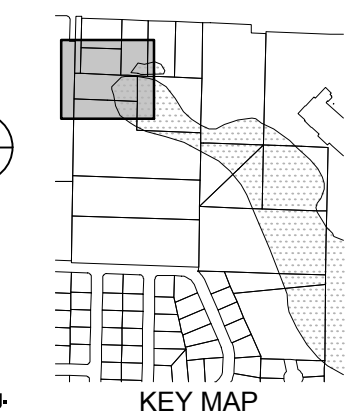


MATCHLINE - REFER TO SHEET C-204

SITE AND SURFACING NOTES

- 1 HMA TRAIL PER DETAIL (C-507)
- 2 GRAVEL TRAIL PER DETAIL (C-507)
- 3 CEMENT CONCRETE PAVEMENT PER DETAIL (C-507)
- 4 HMA PAVEMENT PER CITY OF LAKEWOOD STANDARD PLAN RW-04
- 5 CEMENT CONCRETE SIDEWALK PER LAKEWOOD STANDARD PLAN FR-03
- 6 CEMENT CONCRETE CURB AND GUTTER PER LAKEWOOD STANDARD PLAN FR-04
- 7 CEMENT CONCRETE PARALLEL CURB RAMP PER WSDOT STANDARD PLAN F-40.12-03
- 8 DOUBLE RAIL WOOD FENCE PER DETAIL (C-504)
- 9 TYPE 3 CHAIN LINK FENCE WITH PRIVACY SLATS PER WSDOT STANDARD PLAN L-20.10-03
- 10 BLACK VINYL COATED TYPE 3 CHAIN LINK FENCE PER WSDOT STANDARD PLAN L-20.10-03 EXACT ROUTING OF FENCE TO BE DETERMINED IN THE FIELD WITH THE OWNER AND ENGINEER
- 11 CHAIN LINK GATES PER WSDOT STANDARD PLAN L-30.10-02
- 12 ROCKERY WALL PER DETAIL (C-511)
- 13 GRAVEL SHOULDER PER DETAIL (C-501)
- 14 LOCATION OF FUTURE MONUMENT SIGN TO BE PROVIDED UNDER A SEPARATE CONTRACT
- 15 PARK MAP
- 16 PREFABRICATED CLEAR SPAN BRIDGE PER DETAIL (C-517)
- 17 PREFABRICATED CEMENT CONCRETE PUMP TRACK PER DETAIL (C-507)
- 18 4" WIDE PAINTED WHITE PARKING LINE, MINIMUM (2) COATS
- 19 ACCESSIBLE PARKING STALL WITH SIGN AND PAVEMENT MARKING PER DETAIL
- 20 SITE FURNISHING PER LANDSCAPE PLAN WITH CEMENT CONCRETE PAD PER DETAIL
- 21 ADD NON-SKID TREADS TO EACH EXISTING BRIDGE DECK BOARD, REPAIR METAL BRIDGE COMPONENTS, AND ADD HANDRAIL PER DETAIL
- 22 CEMENT CONCRETE VALLEY GUTTER PER DETAIL (C-507)
- 23 BIRD BLIND PER DETAIL (C-515)
- 24 EXISTING TRAILS TO BE RESURFACED AND WIDENED AS SHOWN. TRAILS ARE NOT SURVEYED AND ARE SHOWN BASED ON GIS INFORMATION. EXACT ROUTING SHALL BE FIELD LOCATED AND CONFIRMED WITH THE OWNER AND ENGINEER PRIOR TO INSTALLATION.
- 25 SINGLE RAIL WOOD FENCE PER DETAIL (C-504)
- 26 SITE FURNISHING PER LANDSCAPE PLAN WITH CEMENT CONCRETE PAD PER DETAIL
- 27 ENTRANCE ISLAND HMA PER DETAIL (C-507)
- 28 PROPOSED MOUNTAIN BIKE TRACK
- 29 TIMBER FRAME STAIRS WITH GRAVEL BACKFILL AND STEEL HAND RAILS PER DETAIL
- 30 TRAFFIC BARRIER CURB PER DETAIL (C-507)
- 31 VEHICLE GATE PER DETAIL (C-505)
- 32 PLAY STRUCTURE PER LANDSCAPE PLANS
- 33 NOT USED
- 34 HYDRANT BOLLARD PER LAKEWOOD WATER DETAIL 8
- 35 CEMENT CONCRETE PERPENDICULAR CURB RAMP PER WSDOT STANDARD PLAN F-40.15-04
- 36 RELOCATED SIGN WITH SIGN POST PER DETAIL (C-503)
- 37 GRAVITY BLOCK WALL PER DETAIL (C-511)
- 38 PREFABRICATED 20'x30' PICNIC SHELTER AND CEMENT CONCRETE PAD PER DETAIL
- 39 MOUNTABLE CURB PER DETAIL (C-504)
- 40 REMOVABLE BOLLARD PER DETAIL (C-507)
- 41 CEMENT CONCRETE PAD FOR FUTURE SITE FURNISHING PER DETAIL (C-507)
- 42 PLAY AREA CURB PER DETAIL (C-507)
- 43 HMA WEDGE CURB PER CITY OF LAKEWOOD STANDARD DETAIL FR-04
- 44 SITE FURNISHING PER LANDSCAPE PLAN WITH GRAVEL SURFACING PER DETAIL
- 45 SINGLE DIRECTION CURB RAMP PER WSDOT STANDARD PLAN F-40.16-03
- 46 ACCESSIBLE RAMP AND HANDRAIL PER DETAIL
- 47 PREFABRICATED RESTROOM (C-515, C-516, C-517, C-518) PER DETAIL

MATCHLINE - REFER TO SHEET C-203



PROJECT:
 PHASE 1 & 2 IMPROVEMENTS
WARDS LAKE PARK
 2716 84TH ST CT S
 LAKEWOOD, WA 98499

REVISIONS

ADDENDUM 4, 11.19.2024

DATE: 10.29.24
 BCRA NO: 21167
 DRAWN BY: RJB DESIGNED BY: BS
 REVIEWED BY: ACC
 SHEET TITLE: SITE AND SURFACING PLAN

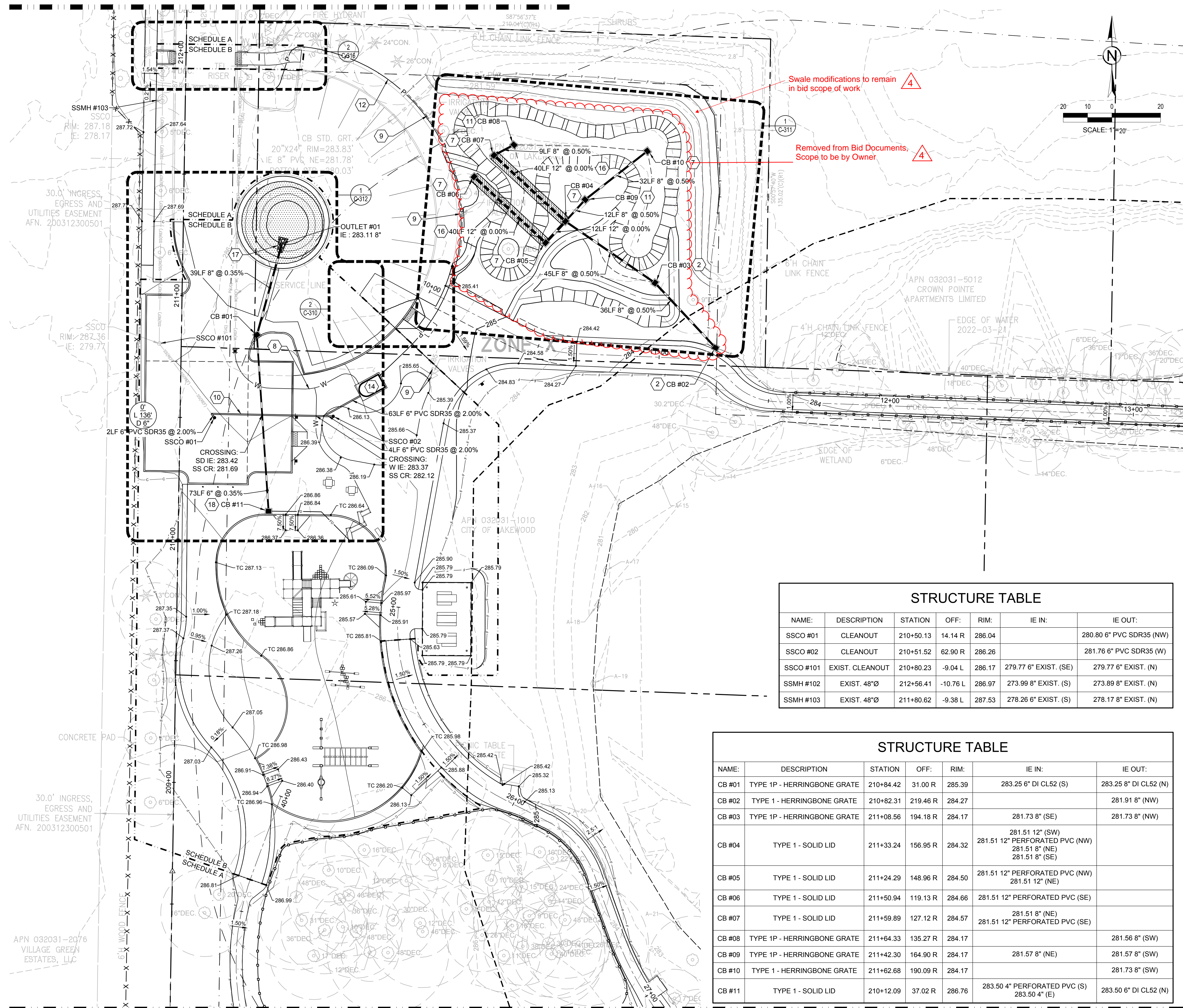


C-202

BID SET

IF SHEET MEASURES LESS THAN 24"X36", IT IS A REDUCED PRINT. REDUCE SCALE ACCORDINGLY

MATCHLINE - REFER TO SHEET C-301



4 Removal of notes only applies to this specific sheet, not the full project scope

GRADING, DRAINAGE & UTIL. NOTES

- 1 STORMWATER INFILTRATION FACILITY PER DETAIL (C-508, C-508)
- 2 CONNECT EXISTING STORM DRAINAGE LINE TO NEW CATCH BASIN
- 3 SWALE PER DETAIL (C-517)
- 4 ROCK CHECK DAM WITH CONSTRUCTION AND SPACING PER DETAIL
- 5 1" WATER SERVICE LINE AND 5/8" WATER METER PER LAKEWOOD WATER DETAIL 7A
- 6 PET FOUNTAIN AND DRAIN PER DETAIL (C-517)
- 7 TYPE 1 CATCH BASIN PER DETAIL (C-510)
- 8 1-1/2" WATER SERVICE LINE. CONNECT TO EXISTING WATER SERVICE LINE. EXISTING WATER SERVICE LINE IS BASED ON AS-BUILT DOCUMENTS AND HAS NOT BEEN SURVEYED. POT HOLE TO VERIFY LOCATION, ELEVATION, AND MATERIAL AND NOTIFY THE OWNER AND ENGINEER IF EXISTING CONDITION DIFFERS FROM WHAT IS SHOWN ON THE PLANS.
- 9 ADJUST TO GRADE
- 10 6" SANITARY SEWER LATERAL. CONNECT TO EXISTING SANITARY SEWER LINE. EXISTING SANITARY SEWER LINE IS BASED ON AS-BUILT DOCUMENTS AND HAS NOT BEEN SURVEYED. POT HOLE TO VERIFY LOCATION, ELEVATION, AND MATERIAL AND NOTIFY THE OWNER AND ENGINEER IF EXISTING CONDITION DIFFERS FROM WHAT IS SHOWN ON THE PLANS.
- 11 CATCH BASIN TYPE 1P WITH DOWNTURNED ELBOW PER DETAIL (C-511)
- 12 POWER SERVICE LINE PER ELECTRICAL PLAN
- 13 UTILITY EQUIPMENT TO BE RELOCATED BY OTHERS. COORDINATE WITH UTILITY PURVEYOR PRIOR TO CONSTRUCTION
- 14 PREFABRICATED RESTROOM PER DETAIL (C-514, C-515, C-516, C-517)
- 15 FIRE HYDRANT AND HYDRANT BOLLARDS PER LAKEWOOD WATER DETAILS 8 AND 9
- 16 INFILTRATION TRENCH PER DETAIL (C-510)
- 17 ENERGY DISSIPATER PER DETAIL (C-507)
- 18 CONNECT TO PLAYGROUND INFILTRATION EMERGENCY OVERFLOW SYSTEM PER LANDSCAPE PLAN

STRUCTURE TABLE

NAME:	DESCRIPTION	STATION	OFF:	RIM:	IE IN:	IE OUT:
SSCO #01	CLEANOUT	210+50.13	14.14 R	286.04		280.80 6" PVC SDR35 (NW)
SSCO #02	CLEANOUT	210+51.52	62.90 R	286.26		281.76 6" PVC SDR35 (W)
SSCO #101	EXIST. CLEANOUT	210+80.23	-9.04 L	286.17	279.77 6" EXIST. (SE)	279.77 6" EXIST. (N)
SSMH #102	EXIST. 48"Ø	212+56.41	-10.76 L	286.97	273.99 8" EXIST. (S)	273.89 8" EXIST. (N)
SSMH #103	EXIST. 48"Ø	211+80.62	-9.38 L	287.53	278.26 6" EXIST. (S)	278.17 8" EXIST. (N)

STRUCTURE TABLE

NAME:	DESCRIPTION	STATION	OFF:	RIM:	IE IN:	IE OUT:
CB #01	TYPE 1P - HERRINGBONE GRATE	210+84.42	31.00 R	285.39	283.25 6" DI CL52 (S)	283.25 8" DI CL52 (N)
CB #02	TYPE 1 - HERRINGBONE GRATE	210+82.31	219.46 R	284.27		281.91 8" (NW)
CB #03	TYPE 1P - HERRINGBONE GRATE	211+08.56	194.18 R	284.17	281.73 8" (SE)	281.73 8" (NW)
CB #04	TYPE 1 - SOLID LID	211+33.24	156.95 R	284.32	281.51 12" (SW) 281.51 12" PERFORATED PVC (NW) 281.51 8" (NE) 281.51 8" (SE)	
CB #05	TYPE 1 - SOLID LID	211+24.29	148.96 R	284.50	281.51 12" PERFORATED PVC (NW) 281.51 12" (NE)	
CB #06	TYPE 1 - SOLID LID	211+50.94	119.13 R	284.66	281.51 12" PERFORATED PVC (SE)	
CB #07	TYPE 1 - SOLID LID	211+59.89	127.12 R	284.57	281.51 8" (NE) 281.51 12" PERFORATED PVC (SE)	
CB #08	TYPE 1P - HERRINGBONE GRATE	211+64.33	135.27 R	284.17		281.56 8" (SW)
CB #09	TYPE 1P - HERRINGBONE GRATE	211+42.30	164.90 R	284.17	281.57 8" (NE)	281.57 8" (SW)
CB #10	TYPE 1 - HERRINGBONE GRATE	211+62.68	190.09 R	284.17		281.73 8" (SW)
CB #11	TYPE 1 - SOLID LID	210+12.09	37.02 R	286.76	283.50 4" PERFORATED PVC (S) 283.50 4" (E)	283.50 6" DI CL52 (N)

MATCHLINE - REFER TO SHEET C-304

MATCHLINE - REFER TO SHEET C-303



PROJECT:
PHASE 1 & 2 IMPROVEMENTS
WARDS LAKE PARK
2716 84TH ST CT S
LAKEWOOD, WA 98499

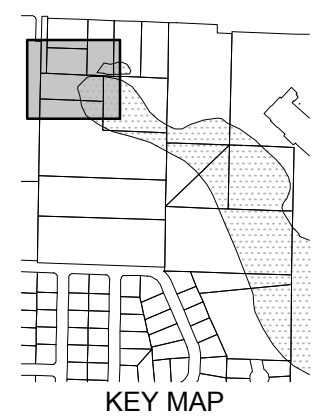
REVISIONS

ADDENDUM 4, 11.19.2024

DATE: 10.29.24
BCRA NO: 21167
DRAWN BY: RJB DESIGNED BY: BS
REVIEWED BY: ACC
SHEET TITLE: GRADING, DRAINAGE, AND UTILITY PLAN

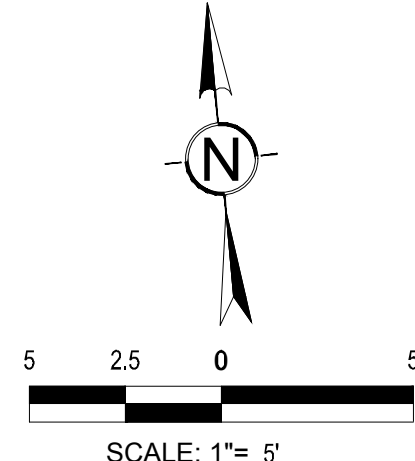
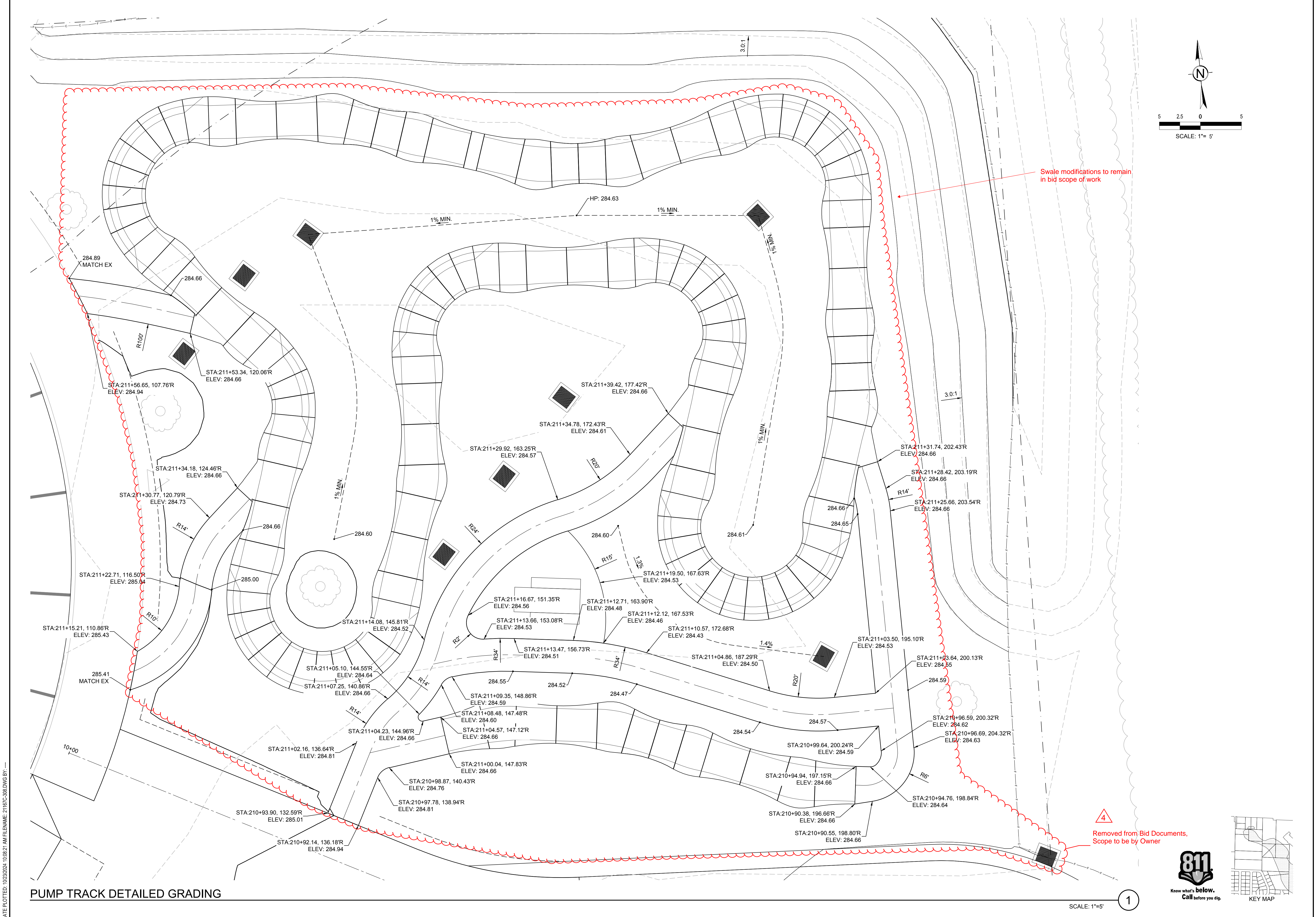


C-302



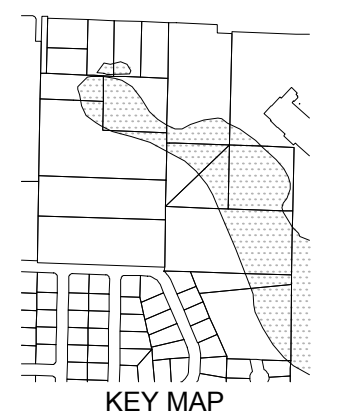
DATE PLOTTED: 10/29/2024 10:04:04 AM FILENAME: 21167C-300.DWG BY: ---

IF SHEET MEASURES LESS THAN 24"X36", IT IS A REDUCED PRINT. REDUCE SCALE ACCORDINGLY



Swale modifications to remain in bid scope of work

Removed from Bid Documents, Scope to be by Owner



PUMP TRACK DETAILED GRADING

SCALE: 1"=5'

DATE PLOTTED: 10/25/2024 10:08:21 AM FILENAME: 21167C-306.DWG BY: ---

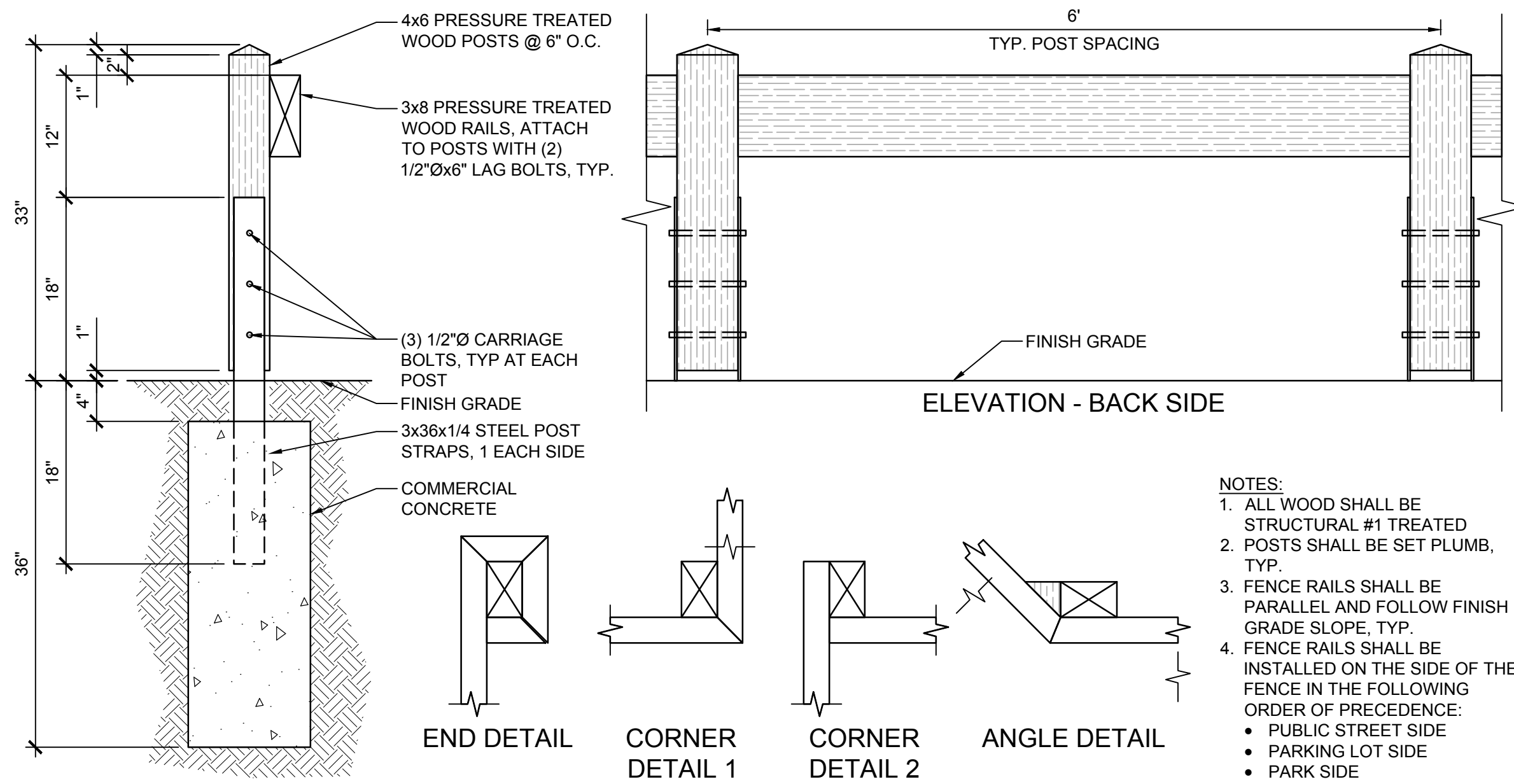


PROJECT:
PHASE 1 & 2 IMPROVEMENTS
WARDS LAKE PARK
2716 84TH ST CT S
LAKEWOOD, WA 98499

REVISIONS:
▲ ADDENDUM 4, 11.19.2024

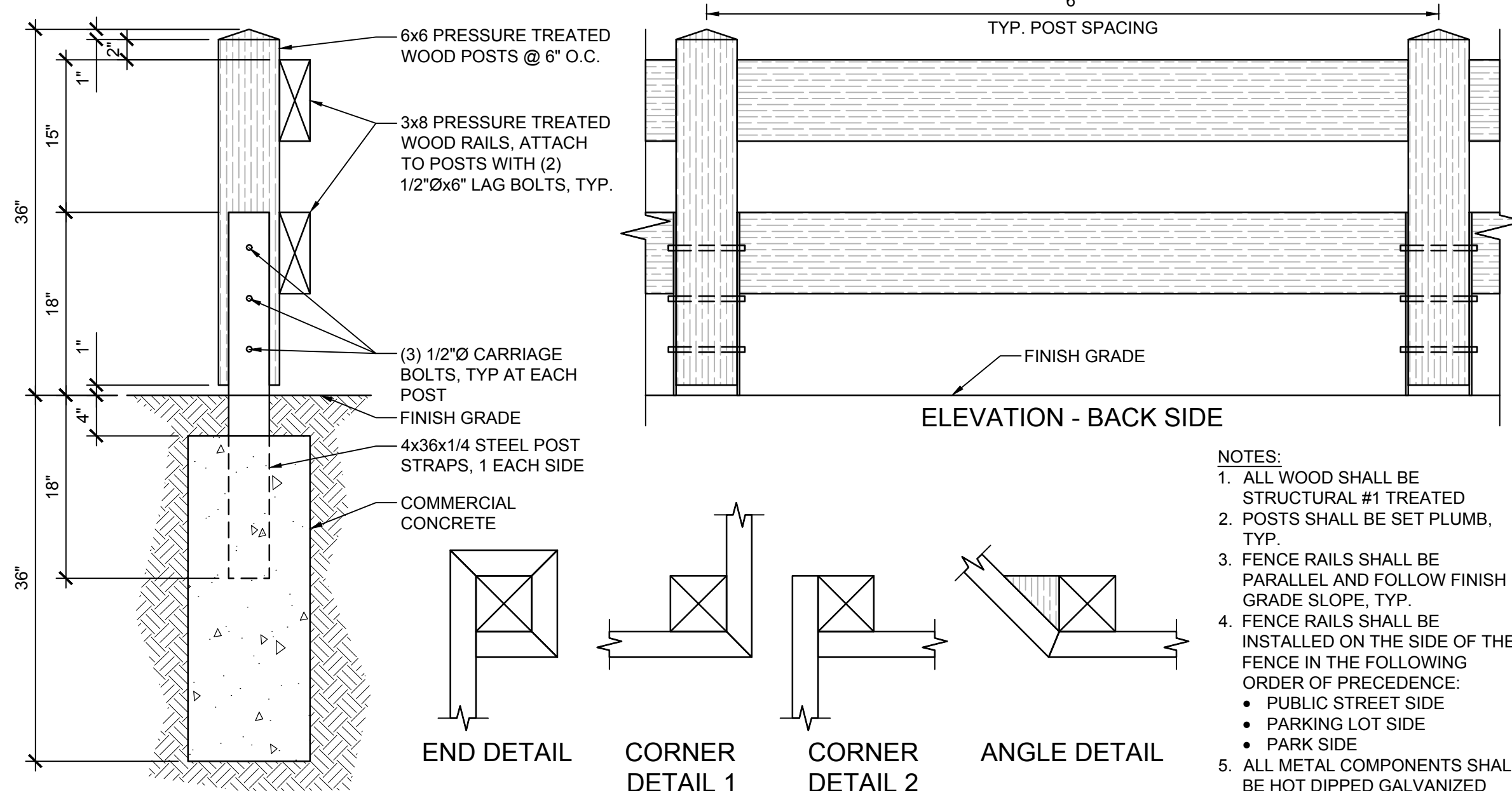
DATE:
10.29.24
BCRA NO:
21167
DRAWN BY: RJB DESIGNED BY: BS
REVIEWED BY: ACC
SHEET TITLE:
DETAILED GRADING
PLAN

IF SHEET MEASURES LESS THAN 24"X36", IT IS A REDUCED PRINT. REDUCE SCALE ACCORDINGLY



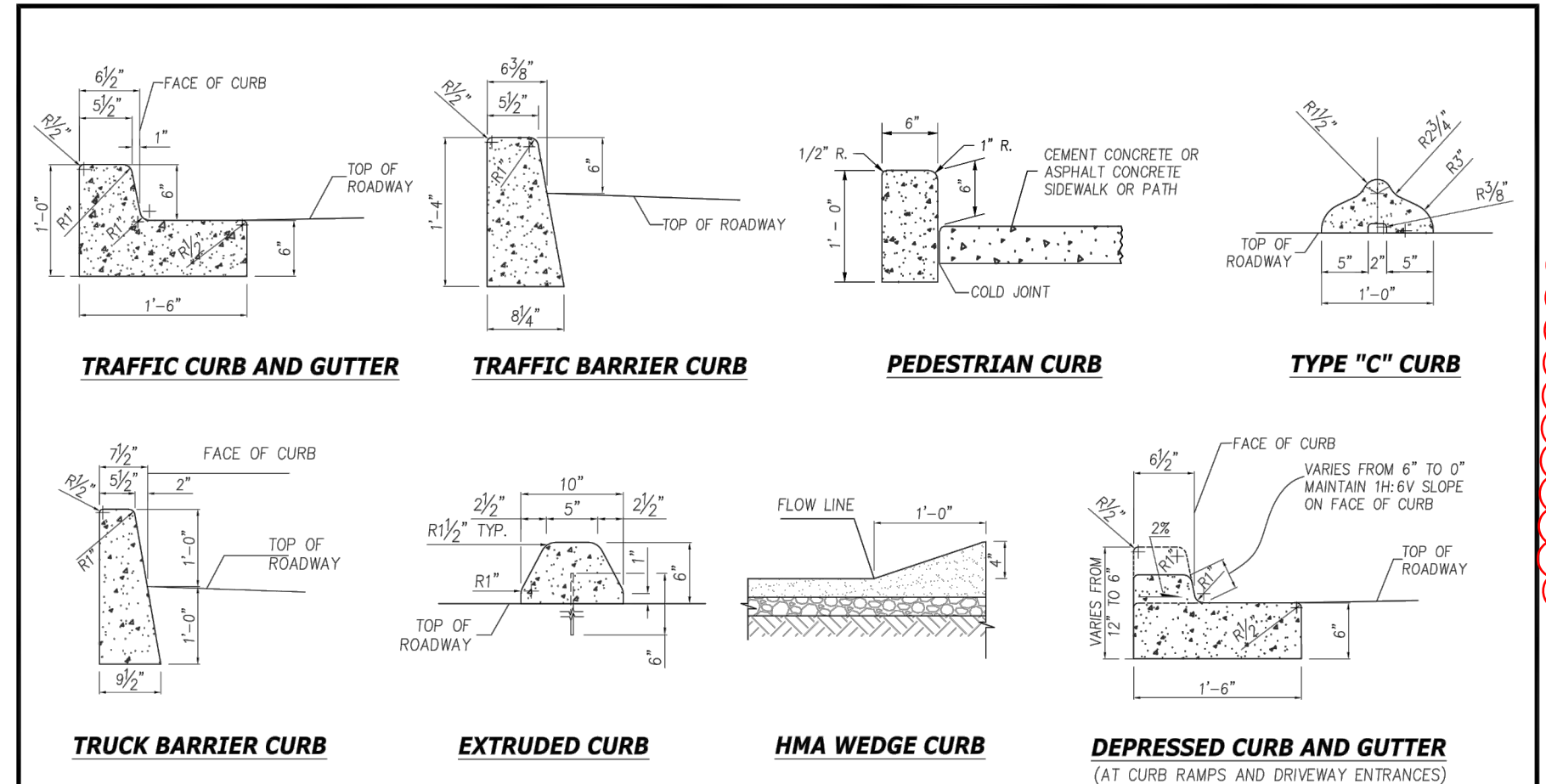
SINGLE RAIL WOOD FENCE

SCALE: NTS **1**



DOUBLE RAIL WOOD FENCE

SCALE: NTS **2**



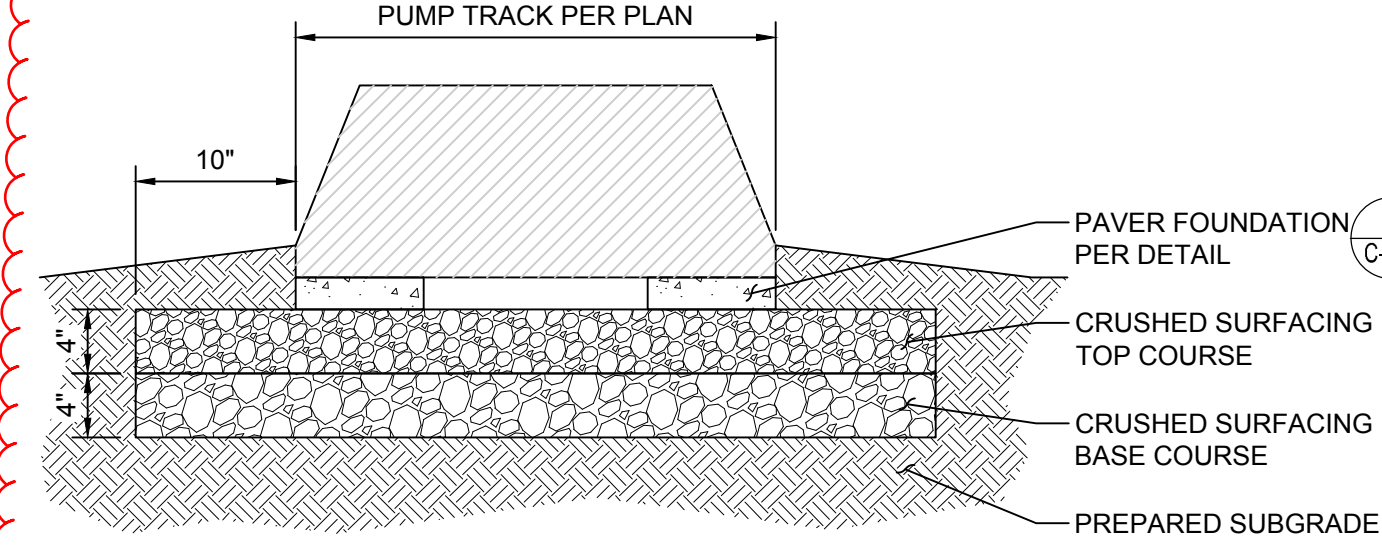
Curbs

DATE	REVISION DESCRIPTION	BY	APPROVED
2/22/09	ORIGINAL DRAWING	TJD	DEW
2/28/12	REVISED DRAWING	TE/C	DEW
3/2/15	REMOVED TYPE "C" CURB	LC	DEW
9/7/17	REVISED DRAWING	TJM	DEW
11/16/23	REVISED DRAWING	CD	PAB

APPROVED FOR PUBLICATION: Paul A. Busch, P.E., Public Works Director/City Engineer, 11/16/20

CURBS

SCALE: NTS **5**



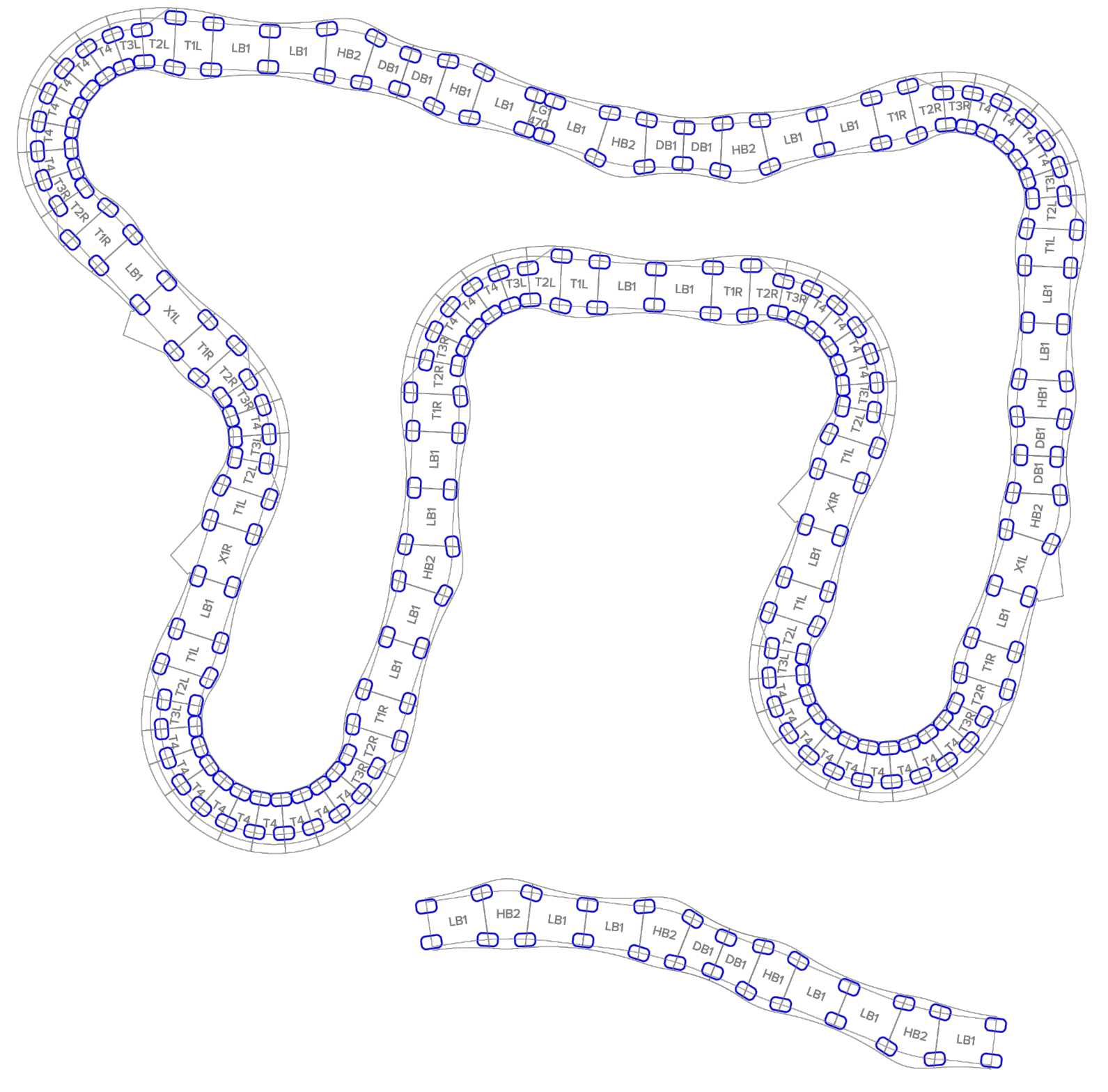
PUMP TRACK SLAB

SCALE: NTS **4**

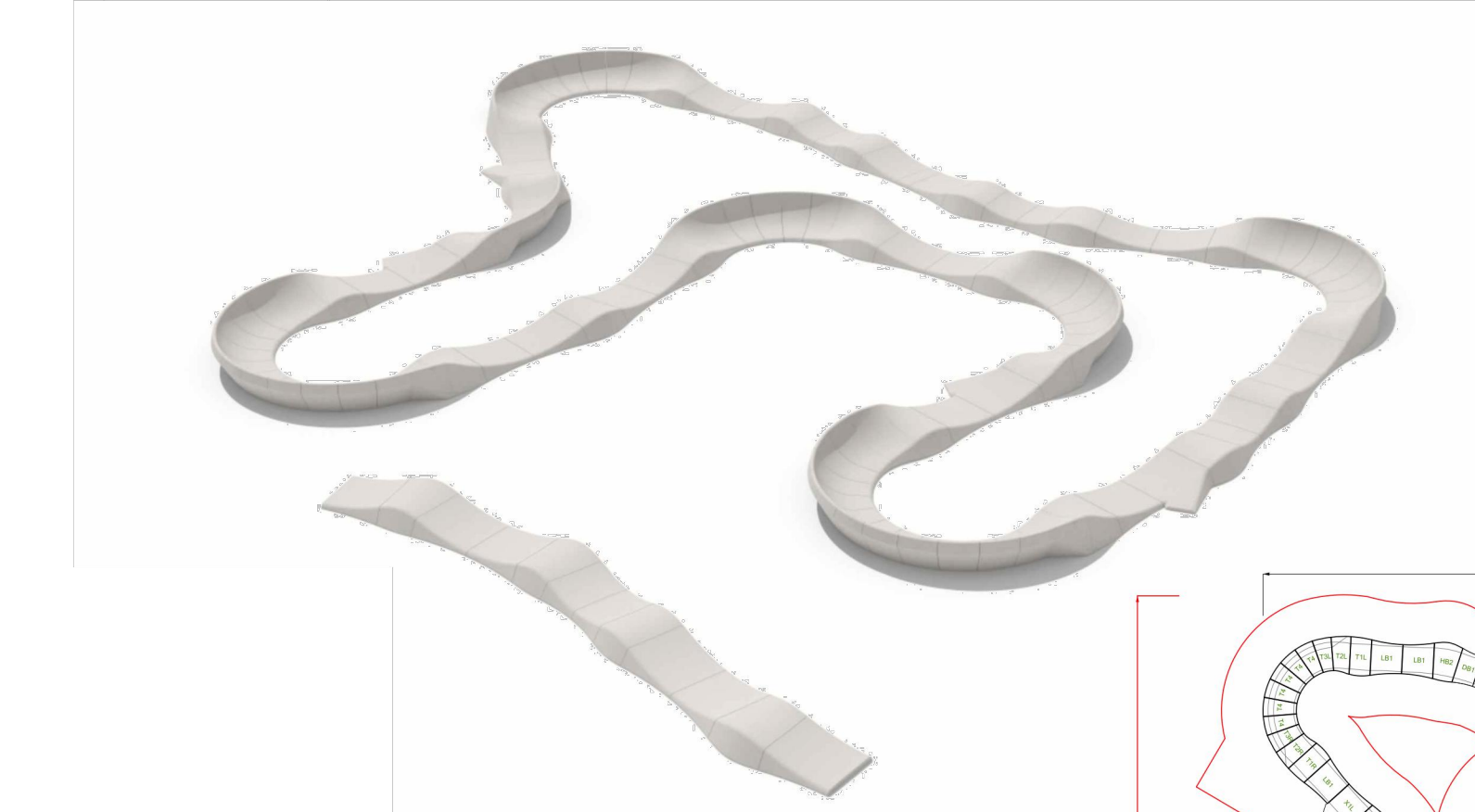
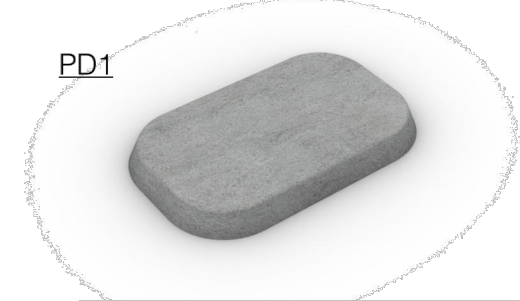
T1L+R	7+7
T2L+R	7+7
T3L+R	7+7
T4	36
LB1	24
HB1	3
HB2	8
X1+X2L/R	2+2
LG1	1
DB1	8

PREFABRICATED CEMENT CONCRETE PUMP TRACK

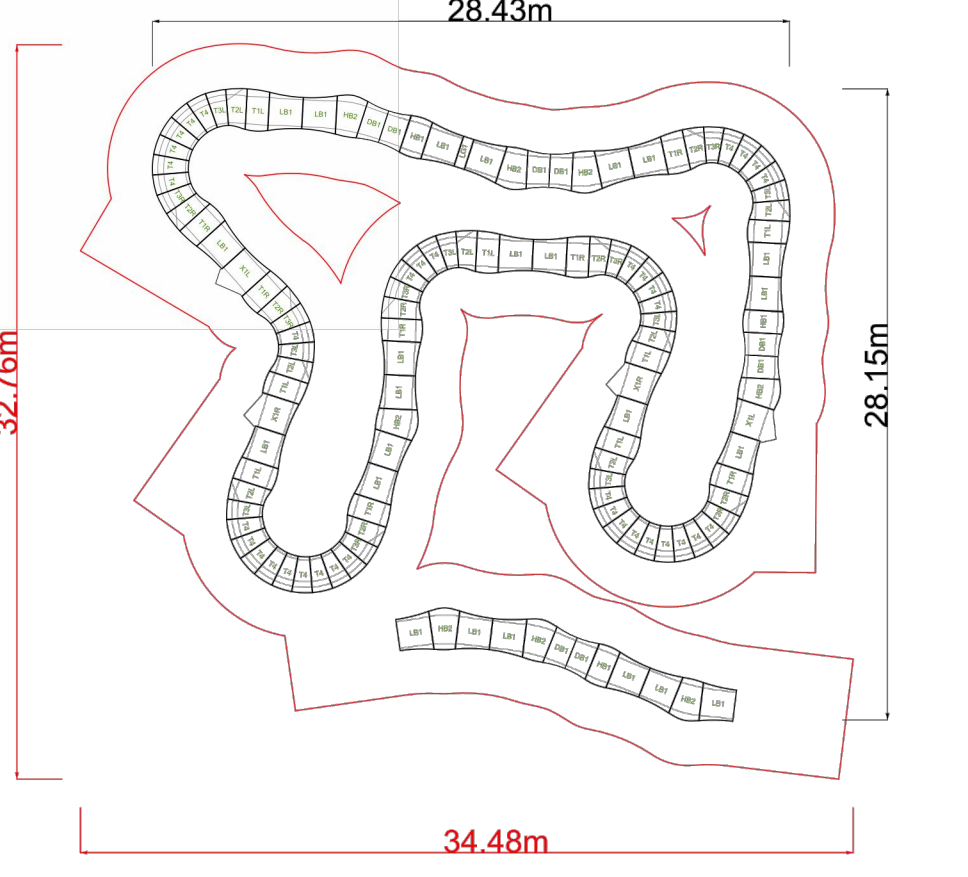
MODULAR PUMPTRACK
Custom layouts



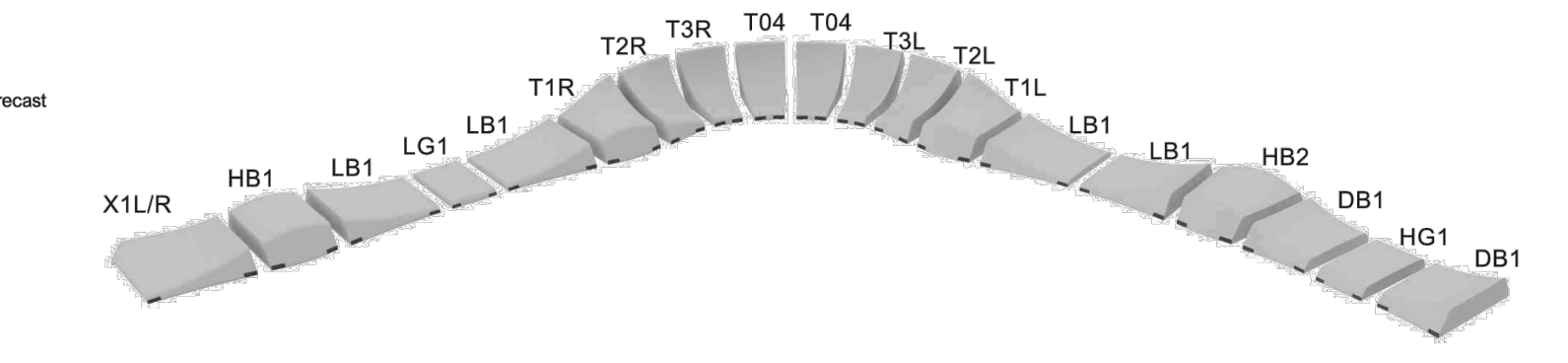
PD1 254 pcs



MODULAR PUMPTRACK
Custom layouts



Rideable surface length: 119 m
Rideable surface area: 178m²



PARKITECT®
Parkitect AG
Reutenenstrasse 22
9042 Speicher, Switzerland
info@parkitect.ch
MWSI - CHE-106.823.064

SCALE: NTS **3**

4
Removed from Bid Documents,
Scope to be by Owner



**PHASE 1 & 2 IMPROVEMENTS
WARDS LAKE PARK**
2716 84TH ST CT S
LAKEWOOD, WA 98499

PROJECT: PHASE 1 & 2 IMPROVEMENTS WARDS LAKE PARK

REVISIONS

ADDENDUM 4, 11.19.2024

DATE: 10.29.24
BCRA NO: 21167
DRAWN BY: RJB DESIGNED BY: BS
REVIEWED BY: ACC
SHEET TITLE: CIVIL DETAILS

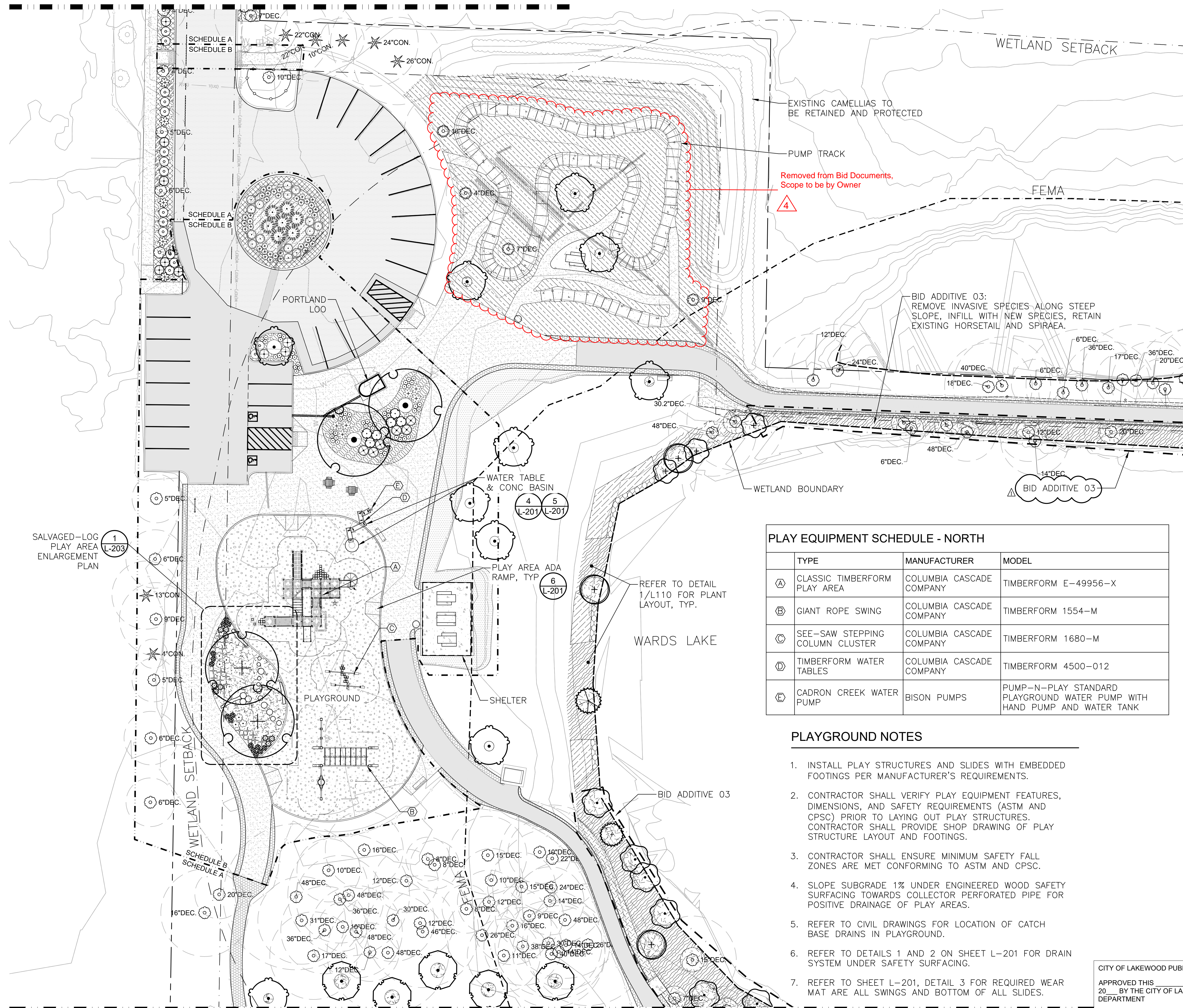


C-504

BID SET

IF SHEET MEASURES LESS THAN 24"x36", IT IS A REDUCED PRINT. REDUCE SCALE ACCORDINGLY

MATCHLINE - REFER TO SHEET L-101



MATCHLINE - REFER TO SHEET L-104

PLAY EQUIPMENT SCHEDULE - NORTH

TYPE	MANUFACTURER	MODEL
(A) CLASSIC TIMBERFORM PLAY AREA	COLUMBIA CASCADE COMPANY	TIMBERFORM E-49956-X
(B) GIANT ROPE SWING	COLUMBIA CASCADE COMPANY	TIMBERFORM 1554-M
(C) SEE-SAW STEPPING COLUMN CLUSTER	COLUMBIA CASCADE COMPANY	TIMBERFORM 1680-M
(D) TIMBERFORM WATER TABLES	COLUMBIA CASCADE COMPANY	TIMBERFORM 4500-012
(E) CADRON CREEK WATER PUMP	BISON PUMPS	PUMP-N-PLAY STANDARD PLAYGROUND WATER PUMP WITH HAND PUMP AND WATER TANK

PLAYGROUND NOTES

- INSTALL PLAY STRUCTURES AND SLIDES WITH EMBEDDED FOOTINGS PER MANUFACTURER'S REQUIREMENTS.
- CONTRACTOR SHALL VERIFY PLAY EQUIPMENT FEATURES, DIMENSIONS, AND SAFETY REQUIREMENTS (ASTM AND CPSC) PRIOR TO LAYING OUT PLAY STRUCTURES. CONTRACTOR SHALL PROVIDE SHOP DRAWING OF PLAY STRUCTURE LAYOUT AND FOOTINGS.
- CONTRACTOR SHALL ENSURE MINIMUM SAFETY FALL ZONES ARE MET CONFORMING TO ASTM AND CPSC.
- SLOPE SUBGRADE 1% UNDER ENGINEERED WOOD SAFETY SURFACING TOWARDS COLLECTOR PERFORATED PIPE FOR POSITIVE DRAINAGE OF PLAY AREAS.
- REFER TO CIVIL DRAWINGS FOR LOCATION OF CATCH BASE DRAINS IN PLAYGROUND.
- REFER TO DETAILS 1 AND 2 ON SHEET L-201 FOR DRAIN SYSTEM UNDER SAFETY SURFACING.
- REFER TO SHEET L-201, DETAIL 3 FOR REQUIRED WEAR MAT ARE ALL SWINGS AND BOTTOM OF ALL SLIDES.

CITY OF LAKEWOOD PUBLIC WORKS ENGINEERING DEPARTMENT
 APPROVED THIS _____ DAY OF _____
 20____ BY THE CITY OF LAKEWOOD PUBLIC WORKS ENGINEERING DEPARTMENT
 CITY ENGINEER OR DESIGNEE

LEGEND

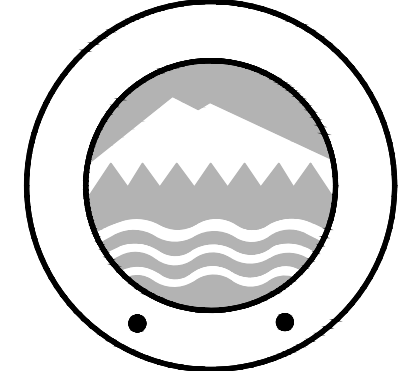
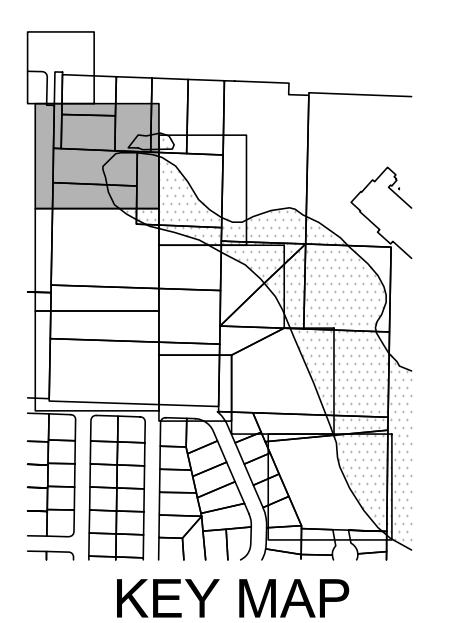
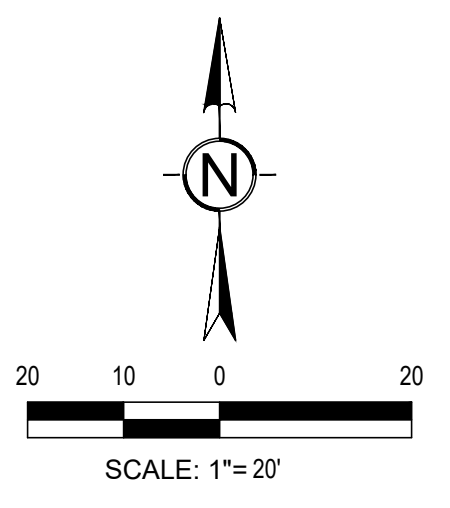
- (Symbol) EXISTING TREES TO BE PROTECTED & RETAINED
- (Symbol) TREE DRIP LINE
- (Symbol) MULCH AROUND EXISTING & PROPOSED TREES
- (Symbol) ENGINEERED WOOD FIBER PLAY SURFACING
- (Symbol) BID ADDITIVE

SITE FURNISHINGS LEGEND L-102

- (Symbol) (1) RELOCATED EXISTING PICNIC TABLE
- (Symbol) (1) WABASH VALLEY, SIGNATURE COLLECTION 8' TABLE, 3/8" LEGS, DIAMOND, COLOR: GREEN
- (Symbol) (3) WABASH VALLEY, SIGNATURE COLLECTION 8' ADA TABLE, 2 3/8" LEGS, DIAMOND, COLOR: GREEN
- (Symbol) (3) WABASH VALLEY, SIGNATURE COLLECTION 6' BENCH W/ BACK, SURFACE MOUNT, DIAMOND, COLOR: GREEN
- (Symbol) (1) WABASH VALLEY, SIGNATURE COLLECTION 6' BENCH W/OUT BACK, SURFACE MOUNT, DIAMOND, COLOR: GREEN
- (Symbol) (1) TABLE WITH FOUR SEATS, 4' X 4'
- (Symbol) (1) TABLE WITH THREE SEATS, 4' X 4'
- (Symbol) (2) WABASH 32 GALLON RECEPTACLE, DIAMOND, COLOR: GREEN
- (Symbol) (1) DUMOR 125-30 BIKE RACK (SURFACE MOUNT)

NOTE:

- REFER TO SHEET L-110 FOR SCH-A: MASTER PLANT & SEED SCHEDULES.
- REFER TO SHEET L-111 FOR SCH-B: MASTER PLANT & SEED SCHEDULES.
- REFER TO L-200 SERIES DRAWINGS FOR LANDSCAPE DETAILS, HARDSCAPE & PLANTING DETAILS.
- REFER TO L-300 SERIES DRAWINGS FOR IRRIGATION.
- REFER TO L-400 SERIES FOR IRRIGATION DETAILS
- REFER TO CIVIL FOR VEHICLE AND PEDESTRIAN PAVING.
- REFER TO SHEET L-102.1 FOR PLANT SCHEDULES FOR THIS SHEET.



PROJECT:
 PHASE 1 & 2
WARDS LAKE PARK
 2716 84TH ST CT S
 LAKEWOOD, WA 98499

REVISIONS

NO.	DATE	DESCRIPTION
1	11.14.2024	ADDENDUM 1
2	11.19.2024	ADDENDUM 4

DATE: 11-14-24
 BCRA NO: 21167
 DRAWN BY: PS DESIGNED BY: PS, PG
 REVIEWED BY: IO
 SHEET TITLE: LANDSCAPE PLAN

DATE PLOTTED: 11/15/2024 3:59:25 PM FILENAME: L-101-105 PLANTING PLAN W/L-102.DWG BY: ...

PLANT SCHEDULE L-102 SCH-A

SYMBOL	QTY	BOTANICAL / COMMON NAME	SIZE	SPACING
TREES				
	2	ALNUS RUBRA RED ALDER	1 GAL, 12" HT	
	9	CORNUS NUTTALLII 'EDDIE'S WHITE WONDER' EDDIE'S WHITE WONDER DOGWOOD	3" CAL, BRANCHING AT 6 FT	
	1	PICEA SITCHENSIS SITKA SPRUCE	1 GAL	
	5	QUERCUS GARRYANA OREGON WHITE OAK	5 GAL, 4 - 6 FT HT	
	3	SALIX HOOKERIANA DUNE WILLOW	1 GAL, 12" HT	
SHRUBS				
	5	AZALEA X 'HINO-CRIMSON' HINO-CRIMSON KURUME AZALEA	2 GAL	
	6	AZALEA X 'GIRARD'S FUCHSIA' GIRARD'S FUCHSIA AZALEA	2 GAL	
	14	PINUS MUGO 'PUMILIO' DWARF MUGO PINE	2 GAL, 12" SPREAD	
GROUND COVERS				
	52	AJUGA REPTANS 'CATLIN'S GIANT' CATLIN'S GIANT CARPET BUGLE	4" POT	18" o.c.
	53	FRAGARIA CHILOENSIS BEACH STRAWBERRY	4" POT	18" o.c.
	78	RUBUS CALYCINOIDES 'EMERALD CARPET' EMERALD CARPET CREEPING BRAMBLE	4" POT	18" o.c.

PLANT MIX & SEED MIX SCHEDULE L-102 SCH-A

	SHORELINE - NATIVE SHRUB MIX CORNUS SERICEA / RED TWIG DOGWOOD HOLODISCUS DISCOLOR / OCEANSPRAY LONICERA INVOLUCRATA / TWINBERRY MYRICA GALE / SWEETGALE ROSA NUTKANA / NOOTKA ROSE RUBUS PARVIFLORUS / THIMBLEBERRY SPIRAEA DOUGLASII / WESTERN SPIREA SYMPHORICARPOS ALBUS / COMMON WHITE SNOWBERRY	1,078 SF
	SHORELINE - NATIVE RUSH MIX CLUSTER SAME SPECIES IN GROUPS OF 5 TO 12 JUNCUS EFFUSUS SPP. PACIFICUS / PACIFIC RUSH SCHOENOPLECTUS ACUTUS / HARDSTEM BULRUSH SCHOENOPLECTUS TABERNAEMONTANI / SOFTSTEM BULRUSH	158 SF
	LAWN SEED MIX IRRIGATED AREA	1,806 SF
	TRAIL BUFFER - NATIVE SEED MIX SUNMARK "STREAMBANK PLUS MIX" APPLICATION RATE: 1.5 LBS/1000 SF	306 SF
	SHORELINE - LOW GROW NATIVE MIX 1. APPLY FIRST: SUNMARK "NATIVE WATER QUALITY MIX" AT APPLICATION RATE OF 21.69 LBS / ACRE. 2. ALLOW ABOVE MIX TO GROW FOR 1 WEEK. 3. THE APPLY SUNMARK "WETLAND PRAIRIE MIX" AT RATE OF 43.66 LBS / ACRE.	1,291 SF
	PUMP TRACK AREA - SEED MIX SUNMARK "SUPREME PLUS MIX" APPLICATION RATE: 4 LBS / 1000 SF	8,508 SF

NOTE:

- SEE SHEET L-110 FOR SCH-A: MASTER PLANT & SEED SCHEDULES
- REFER TO DETAIL 1, L-110 FOR SAMPLE LAYOUT: SHORELINE - NATIVE SHRUB MIX

PLANT SCHEDULE L-102 SCH-B

SYMBOL	QTY	BOTANICAL / COMMON NAME	SIZE	SPACING
TREES				
	2	BETULA NIGRA RIVER BIRCH	2" CAL	
	1	CORNUS NUTTALLII 'EDDIE'S WHITE WONDER' EDDIE'S WHITE WONDER DOGWOOD	3" CAL, BRANCHING AT 6 FT	
	2	QUERCUS PHELLOS WILLOW OAK	3" CAL, BRANCHING AT 6 FT	
SHRUBS				
	6	AZALEA X 'HINO-CRIMSON' HINO-CRIMSON KURUME AZALEA	2 GAL	
	9	AZALEA X 'GIRARD'S FUCHSIA' GIRARD'S FUCHSIA AZALEA	2 GAL	
	15	CORNUS SERICEA 'KELSEY' KELSEY'S DWARF RED TWIG DOGWOOD	2 GAL	
	2	PINUS MUGO 'PUMILIO' DWARF MUGO PINE	2 GAL, 12" SPREAD	
	6	RIBES SANGUINEUM RED FLOWERING CURRANT	2 GAL, 15" HT	
	7	SALIX PURPUREA 'CANYON BLUE' ARCTIC BLUE PURPLE OSIER WILLOW	3 GAL	
	38	SPIRAEA BETULIFOLIA 'TOR' WHITE FROST BIRCH LEAF SPIREA	2 GAL	
	6	VACCINIUM OVATUM EVERGREEN HUCKLEBERRY	5 GAL	
FERNS/GROUNDCOVER/PERENNIALS				
	18	BOUTELOUA GRACILIS 'BLONDE AMBITION' BLONDE AMBITION BLUE GRAMA	2 GAL	
	9	EPIMEDIUM X 'AMBER QUEEN' AMBER QUEEN BARRENWORT	1 GAL	
	59	IRIS TENAX OREGON IRIS	BULB	
	15	STACHYS BYZANTINA 'BIG EARS' BIG EARS LAMB'S EAR	1 GAL	
GROUND COVERS				
	256	FRAGARIA CHILOENSIS BEACH STRAWBERRY	4" POT	18" o.c.
	144	RUBUS CALYCINOIDES 'EMERALD CARPET' EMERALD CARPET CREEPING BRAMBLE	4" POT	18" o.c.

NOTE: SEE SHEET L-111 FOR SCH-B: MASTER PLANT & SEED SCHEDULES

BID ADDITIVE #03: PLANT SCHEDULE L-102

SYMBOL	QTY	BOTANICAL / COMMON NAME	SIZE
TREES			
	1	ALNUS RUBRA RED ALDER	1 GAL, 12" HT
	1	PINUS CONTORTA CONTORTA SHORE PINE	1 GAL
	6	SALIX SITCHENSIS SITKA WILLOW	1 GAL, 12" HT

BID ADDITIVE #03: PLANT MIX & SEED MIX SCHEDULE L-102

	SHORELINE - NATIVE SHRUB MIX CORNUS SERICEA / RED TWIG DOGWOOD HOLODISCUS DISCOLOR / OCEANSPRAY LONICERA INVOLUCRATA / TWINBERRY MYRICA GALE / SWEETGALE ROSA NUTKANA / NOOTKA ROSE RUBUS PARVIFLORUS / THIMBLEBERRY SPIRAEA DOUGLASII / WESTERN SPIREA SYMPHORICARPOS ALBUS / COMMON WHITE SNOWBERRY	1,896 SF
	TRAIL BUFFER - NATIVE SEED MIX SUNMARK "STREAMBANK PLUS MIX" APPLICATION RATE: 1.5 LBS/1000 SF	306 SF

NOTE:

- SEE SHEET L-112 FOR BID ADDITIVE #03 MASTER PLANT & SEED SCHEDULE
- REFER TO DETAIL 1, L-112 FOR SAMPLE LAYOUT: SHORELINE - NATIVE SHRUB MIX

DATE PLOTTED: 11/15/2024 4:00:57 PM FILENAME: L-102-102 PLANTING PLAN W/ DWG BY: ...

CITY OF LAKEWOOD PUBLIC WORKS ENGINEERING DEPARTMENT
APPROVED THIS _____ DAY OF _____
20____ BY THE CITY OF LAKEWOOD PUBLIC WORKS ENGINEERING DEPARTMENT

CITY ENGINEER OR DESIGNEE



PROJECT:
PHASE 1 & 2
WARDS LAKE PARK
2716 84TH STREET S
LAKEWOOD, WA 98499

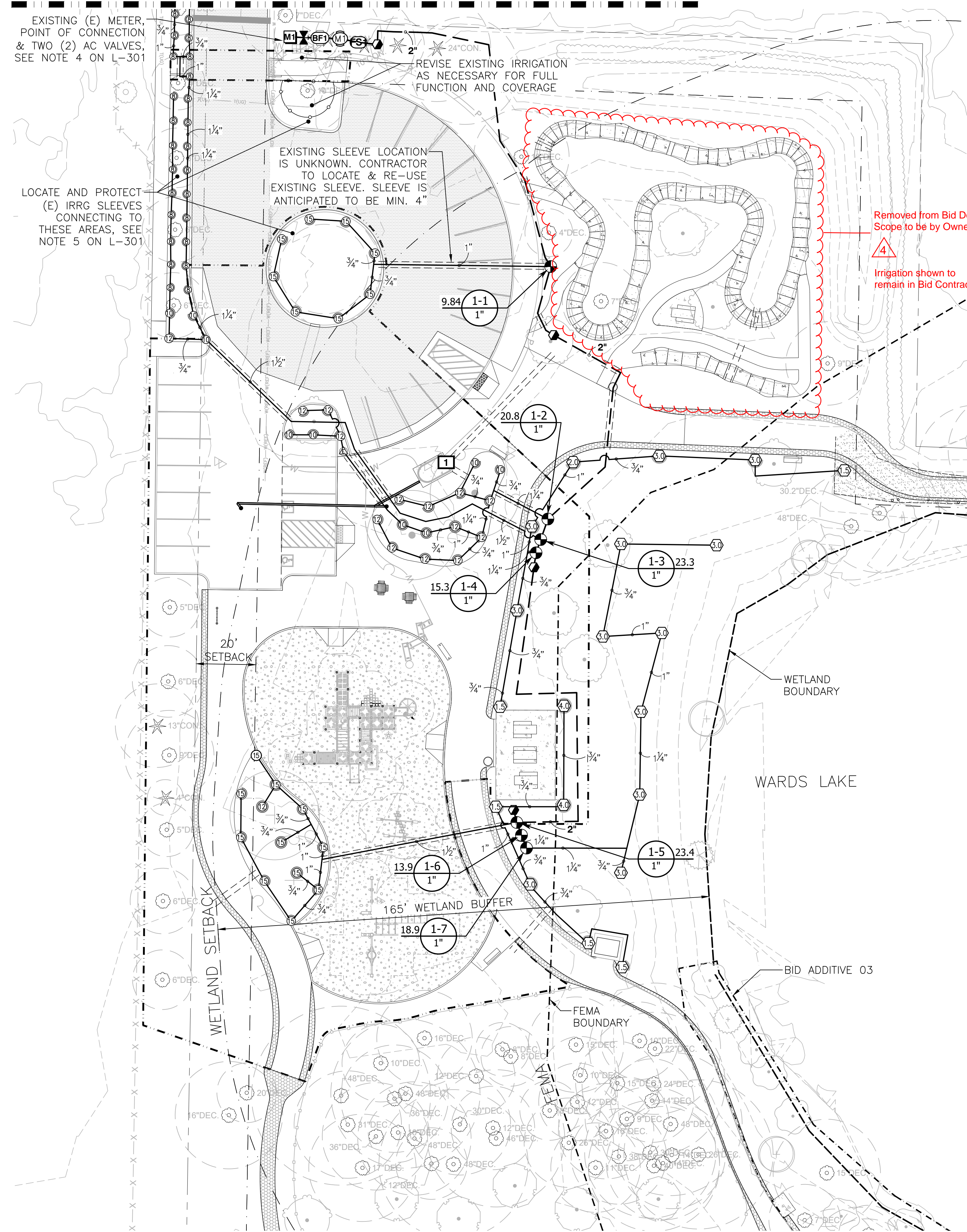
REVISIONS
ADDENDUM 1, 11.14.2024
ADDENDUM 4, 11.19.2024

DATE: 11-14-24
BCRA NO: 21167
DRAWN BY: PS DESIGNED BY: PS, PG
REVIEWED BY: IO
SHEET TITLE: NOTES & SCHEDULES



L-102.1

MATCHLINE - REFER TO L-301



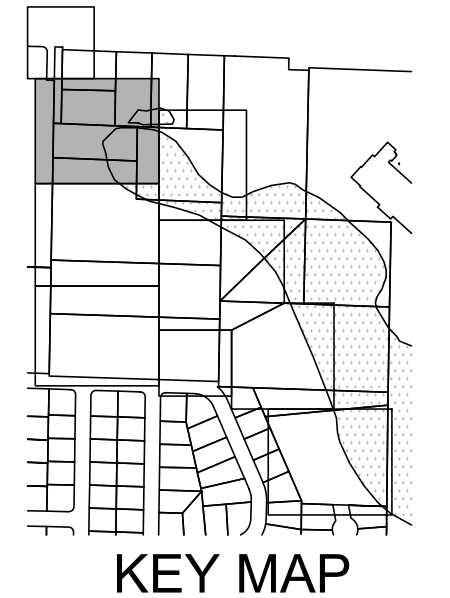
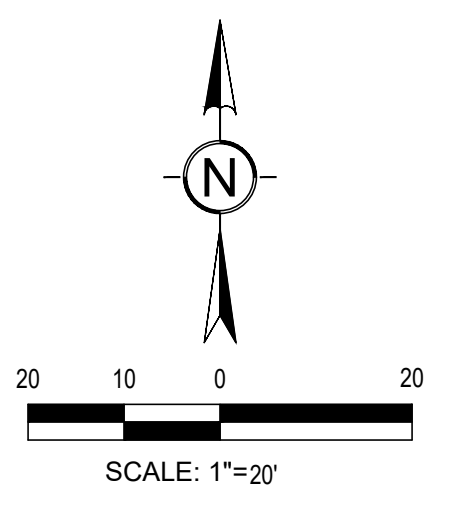
IRRIGATION SCHEDULE

SYMBOL	MANUFACTURER/MODEL/DESCRIPTION	PSI	SYMBOL	MANUFACTURER/MODEL/DESCRIPTION
EST LCS RCS CST SST	RAIN BIRD 1812-SAM-PRS 15 STRIP SERIES SHRUB SPRAY 12IN. POP-UP SPRINKLER WITH CO-MOLDED WIPER SEAL. 1/2IN. NPT FEMALE THREADED INLET. WITH SEAL-A-MATIC CHECK VALVE, AND PRESSURE REGULATING DEVICE.	25	●	RAIN BIRD PESB 1IN., 1-1/2IN., 2IN. PLASTIC INDUSTRIAL VALVES. LOW FLOW OPERATING CAPABILITY, GLOBE CONFIGURATION. WITH SCRUBBER TECHNOLOGY FOR RELIABLE PERFORMANCE IN DIRTY WATER IRRIGATION APPLICATIONS.
Q T H F	RAIN BIRD 1812-SAM-PRS 8 SERIES MPR SHRUB SPRAY 12IN. POP-UP SPRINKLER WITH CO-MOLDED WIPER SEAL. 1/2IN. NPT FEMALE THREADED INLET. WITH SEAL-A-MATIC CHECK VALVE, AND PRESSURE REGULATING DEVICE.	25	●	RAIN BIRD 33-DLRC 3/4IN. BRASS QUICK-COUPLING VALVE, WITH CORROSION-RESISTANT STAINLESS STEEL SPRING, LOCKING THERMOPLASTIC RUBBER COVER, DOUBLE TRACK KEY LUG, AND 2-PIECE BODY.
Q T H F	RAIN BIRD 1812-SAM-PRS 10 SERIES MPR SHRUB SPRAY 12IN. POP-UP SPRINKLER WITH CO-MOLDED WIPER SEAL. 1/2IN. NPT FEMALE THREADED INLET. WITH SEAL-A-MATIC CHECK VALVE, AND PRESSURE REGULATING DEVICE.	25	⌵	ISOLATION VALVE SIZE PER PIPE
Q T H F	RAIN BIRD 1812-SAM-PRS 12 SERIES MPR SHRUB SPRAY 12IN. POP-UP SPRINKLER WITH CO-MOLDED WIPER SEAL. 1/2IN. NPT FEMALE THREADED INLET. WITH SEAL-A-MATIC CHECK VALVE, AND PRESSURE REGULATING DEVICE.	25	M1	WEATHERMATIC 8200CR-XPR 1-1/2" BRASS REMOTE CONTROL VALVE WITH PRESSURE REGULATOR
Q T H F	RAIN BIRD 1812-SAM-PRS 15 SERIES MPR SHRUB SPRAY 12IN. POP-UP SPRINKLER WITH CO-MOLDED WIPER SEAL. 1/2IN. NPT FEMALE THREADED INLET. WITH SEAL-A-MATIC CHECK VALVE, AND PRESSURE REGULATING DEVICE.	25	M2	WEATHERMATIC 8200CR-XPR 1" BRASS REMOTE CONTROL VALVE WITH PRESSURE REGULATOR
Q T H F	RAIN BIRD 1812-SAM-PRS ADJ SHRUB SPRAY 12IN. POP-UP SPRINKLER WITH CO-MOLDED WIPER SEAL. 1/2IN. NPT FEMALE THREADED INLET. WITH SEAL-A-MATIC CHECK VALVE, AND PRESSURE REGULATING DEVICE.	25	BF1	EXISTING ZURN 950XLT 1-1/2" DOUBLE CHECK VALVE ASSEMBLY
Q T H F	HUNTER I-20-06-SR-SS 1.5 TURF ROTOR, 6IN. POP-UP. ADJUSTABLE AND FULL CIRCLE. STAINLESS STEEL RISER. DRAIN CHECK VALVE. SHORT RADIUS NOZZLE.	40	BF2	EXISTING ZURN 950XLT 1" DOUBLE CHECK VALVE ASSEMBLY
Q T H F	HUNTER I-20-06-SR-SS 3.0 TURF ROTOR, 6IN. POP-UP. ADJUSTABLE AND FULL CIRCLE. STAINLESS STEEL RISER. DRAIN CHECK VALVE. SHORT RADIUS NOZZLE.	40	1	NORTH AREA OF PARK: EXISTING RAIN BIRD ESP-8LXI+ CONTROLLER INSTALLED ON RESTROOM WALL IN PLASTIC WALL-MOUNT ENCLOSURE.
Q T H F	HUNTER I-20-06-SS 1.5 TURF ROTOR, 6IN. POP-UP. ADJUSTABLE AND FULL CIRCLE. STAINLESS STEEL RISER. DRAIN CHECK VALVE. STANDARD NOZZLE.	35	1	SOUTH ENTRANCE TO PARK: HUNTER NODE CONTROLLERS AND ALL NECESSARY ACCESSORIES AND SOLENOIDS FOR OPERATION OF VALVES. CONTROLLERS NOT SHOWN ON PLAN
Q T H F	HUNTER I-20-06-SS 2.0 TURF ROTOR, 6IN. POP-UP. ADJUSTABLE AND FULL CIRCLE. STAINLESS STEEL RISER. DRAIN CHECK VALVE. STANDARD NOZZLE.	35	FS	RAIN BIRD FS-100-B 1IN. FLOW SENSOR, BRASS MODEL. SUGGESTED OPERATING RANGE 2.0 GPM TO 40.0 GPM. SIZE FOR FLOW NOT ACCORDING TO PIPE SIZE. RAIN BIRD COMPATIBLE CONTROLLERS: ESP-LXVM(P) LXD LXME2(P) ME3, OR CONTROLLERS ACCEPTING CUSTOM K-FACTOR AND OFFSET. INSTALL IN RAIN BIRD VALVE BOX.
Q T H F	HUNTER I-20-06-SS 2.5 TURF ROTOR, 6IN. POP-UP. ADJUSTABLE AND FULL CIRCLE. STAINLESS STEEL RISER. DRAIN CHECK VALVE. STANDARD NOZZLE.	35	M1	SENSUS OMNI C2S EXISTING WATER METER
Q T H F	HUNTER I-20-06-SS 3.0 TURF ROTOR, 6IN. POP-UP. ADJUSTABLE AND FULL CIRCLE. STAINLESS STEEL RISER. DRAIN CHECK VALVE. STANDARD NOZZLE.	35	M2	WATER METER 1" EXISTING WATER METER
Q T H F	HUNTER I-20-06-SS 4.0 TURF ROTOR, 6IN. POP-UP. ADJUSTABLE AND FULL CIRCLE. STAINLESS STEEL RISER. DRAIN CHECK VALVE. STANDARD NOZZLE.	35		IRRIGATION LATERAL LINE: PVC SCHEDULE 40 SIZE PER PLAN, NO SMALLER THAN 3/4"

- NOTES**
- REFER TO SHEET L-301 FOR IRRIGATION NOTES.
 - REFER TO L-400 SERIES FOR IRRIGATION DETAILS.
 - REFER TO L-100 SERIES FOR PLANTING.

CITY OF LAKEWOOD PUBLIC WORKS ENGINEERING DEPARTMENT
 APPROVED THIS _____ DAY OF _____
 20____ BY THE CITY OF LAKEWOOD PUBLIC WORKS ENGINEERING DEPARTMENT

 CITY ENGINEER OR DESIGNEE



PROJECT:
 PHASE 1 & 2
WARDS LAKE PARK
 2716 84TH ST CT S
 LAKEWOOD, WA 98499

REVISIONS

ADDENDUM 4, 11.19.2024

DATE: 10-29-24
 BCRA NO: 21167
 DRAWN BY: PS DESIGNED BY: PS, PG
 REVIEWED BY: IO
 SHEET TITLE: IRRIGATION PLAN

DATE PLOTTED: 10/29/2024 11:52 PM FILENAME: L-302 IRRIGATION PLANNING BY: ...

